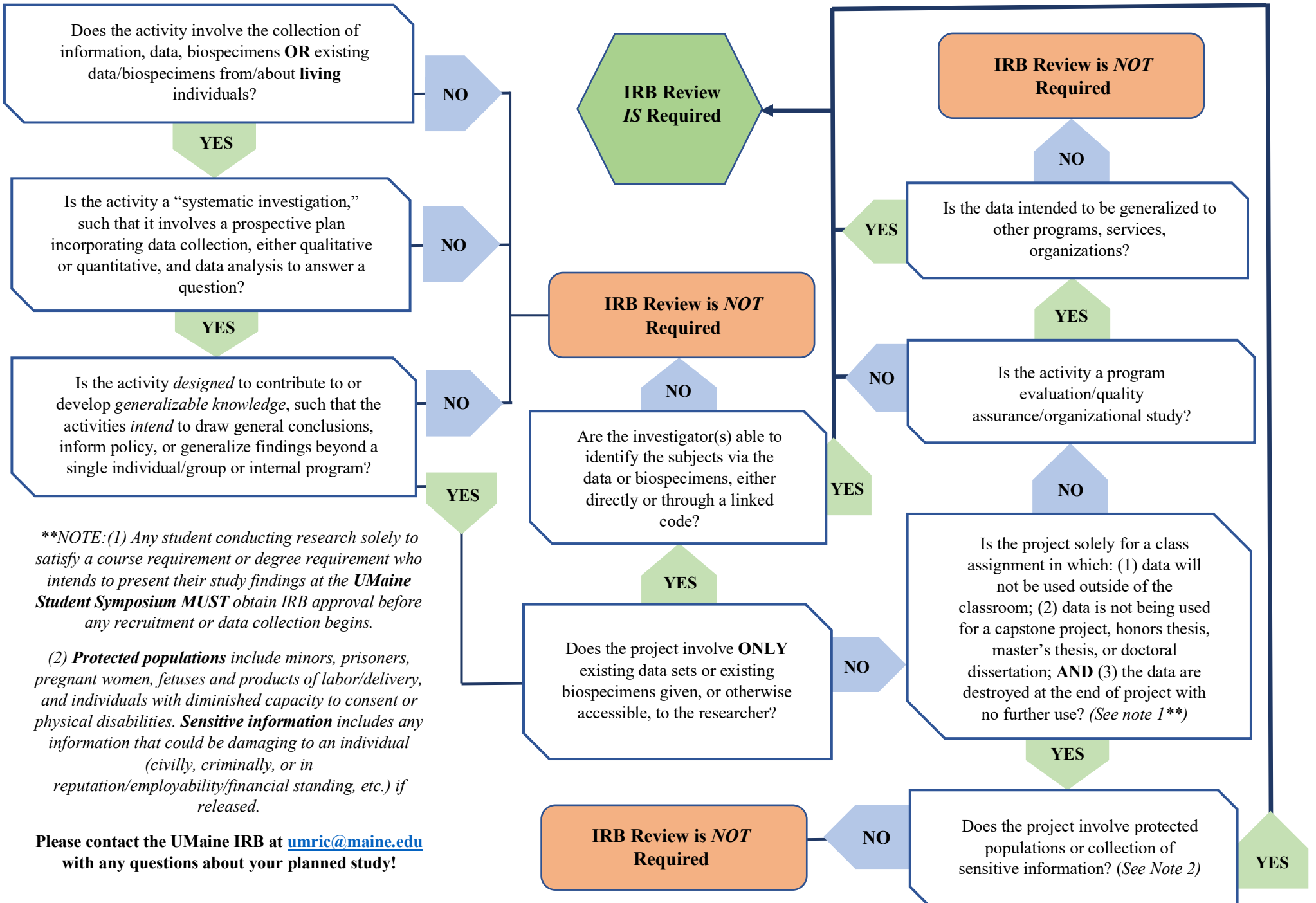


# Does My Study Require IRB Review?



**\*\*NOTE:** (1) Any student conducting research solely to satisfy a course requirement or degree requirement who intends to present their study findings at the **UMaine Student Symposium** **MUST** obtain IRB approval before any recruitment or data collection begins.

(2) **Protected populations** include minors, prisoners, pregnant women, fetuses and products of labor/delivery, and individuals with diminished capacity to consent or physical disabilities. **Sensitive information** includes any information that could be damaging to an individual (civilly, criminally, or in reputation/employability/financial standing, etc.) if released.

Please contact the UMaine IRB at [umric@maine.edu](mailto:umric@maine.edu) with any questions about your planned study!