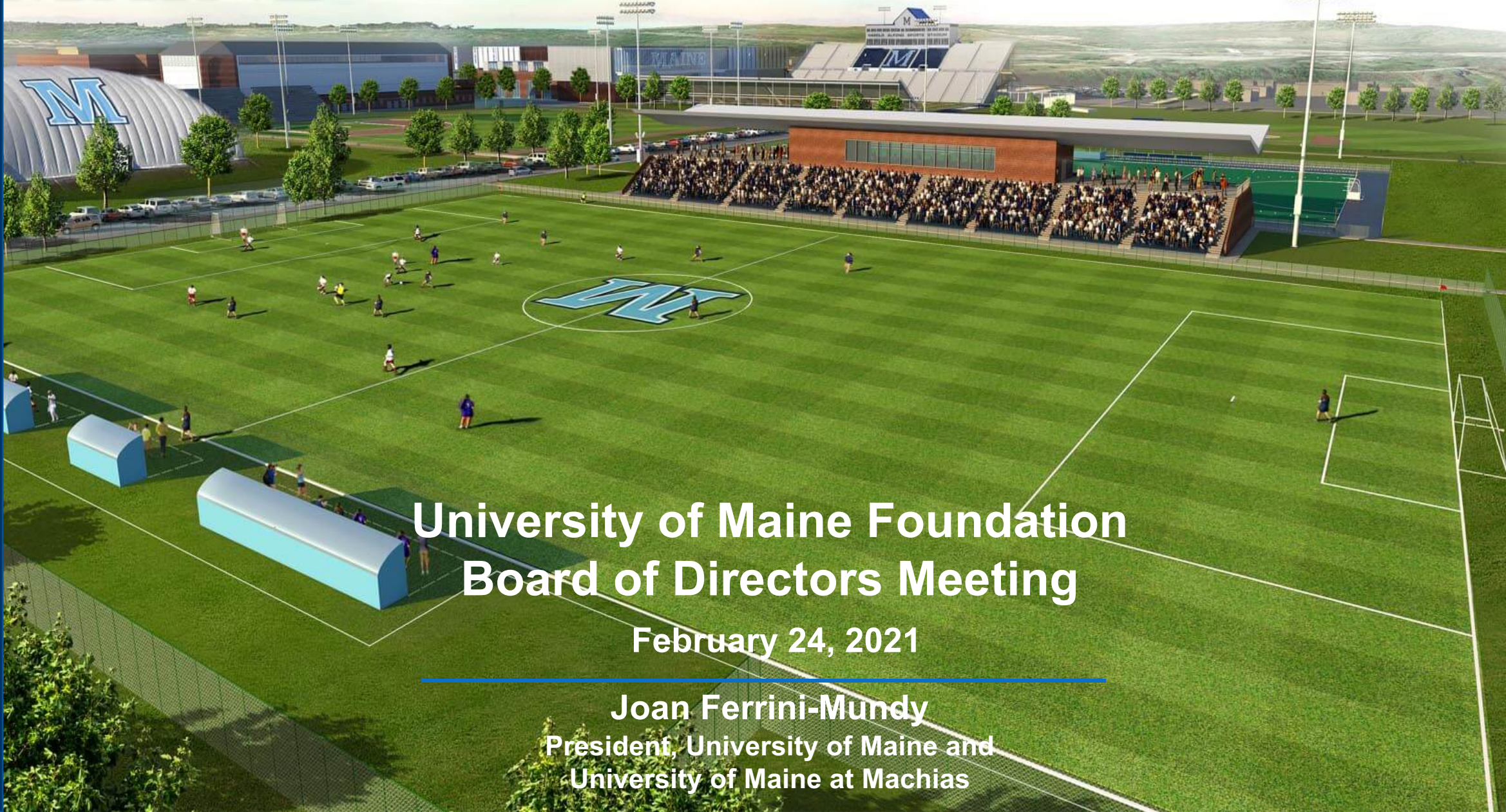




THE UNIVERSITY OF  
**MAINE**



# University of Maine Foundation Board of Directors Meeting

February 24, 2021

---

**Joan Ferrini-Mundy**  
President, University of Maine and  
University of Maine at Machias





## We are back for Spring 2021

- Tools, access and connectivity for students and how/where to access them
- Tips for academic success
- Connecting students with support resources

<https://umaine.edu/keeplearning/>

# UMaine Campus Snapshot

**2,103**

**Students in residence halls with capacity of 3,606**

Approx.  
**198**

**Rooms on Orono campus reserved for quarantine and isolation**

**19,020**

**Asymptomatic tests administered to students, faculty and staff since the start of the Spring semester**

**10,962**

**Current enrollment**  
(Undergraduate 8,548; Graduate 2,414) with **1,882** first-year students

**14**

**Current COVID positive cases, UMaine**

**64%**

**Students taking at least one course face-to-face**



# UMM Campus Snapshot

70

Students in residence halls with capacity of 156

24

Rooms on Machias campus reserved for quarantine and isolation

574

Asymptomatic tests administered to students since the start of the Spring semester

680

Current enrollment

1

Current COVID positive cases, UMM



THE UNIVERSITY OF MAINE AT  
**MACHIAS**

# Phase 6 Asymptomatic Testing

- Two sample collection facilities on campus:
  - Wells Conference Center
  - Collins Center for the Arts
- Testing 1,130 UM/ 45 UMM individuals per day
- Testing 6,012 UM/150 UMM students, staff and faculty per week



**Safer Community  
Mobile App**

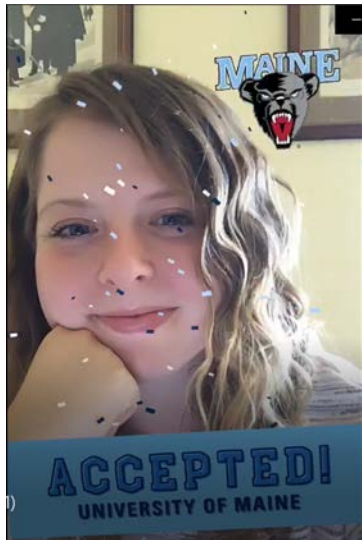
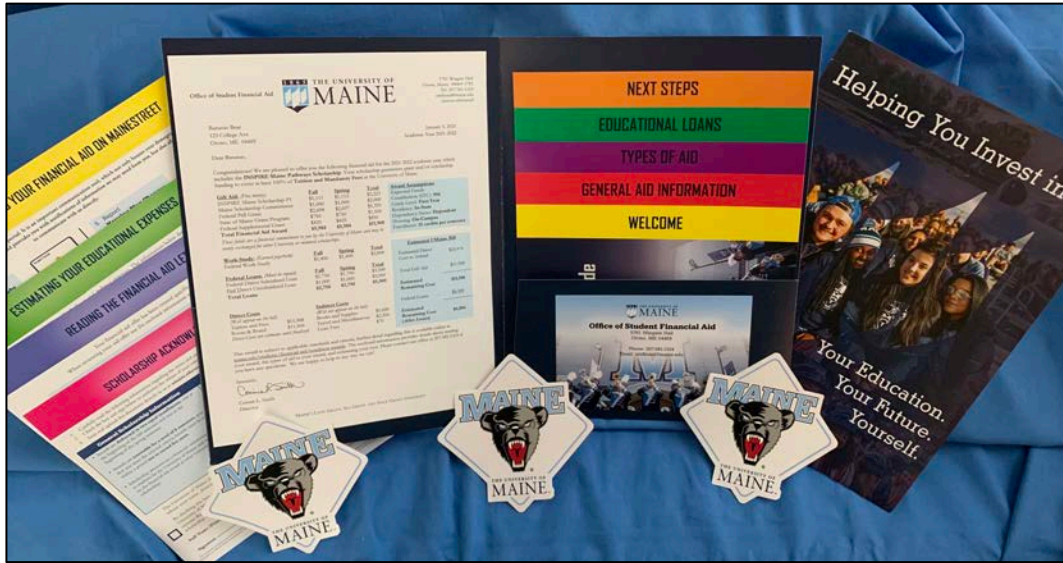


**Shield T3 Mobile Laboratory at Alfond Stadium**





# Enrollment Management Update



## First Year Funnel

February 23, 2021

	2018	2019	2020	2021
Applications	13,265	13,707	14,884	13,994
Complete Apps	11,516	11,732	12,240	12,845
Admitted	10,682	10,626	11,232	12,268
Total Confirms	460	409	454	706
Net Confirms	457	407	446	693
Yield*	4.28%	3.83%	3.97%	5.65%

## Transfer Funnel

February 23, 2021

	2018	2019	2020	2021
Applications	733	798	777	698
Complete Apps	386	388	390	394
Admitted	293	292	291	315
Total Confirms	67	47	58	123
Net Confirms	64	46	58	120
Yield*	21.84%	15.75%	19.93%	38.10%





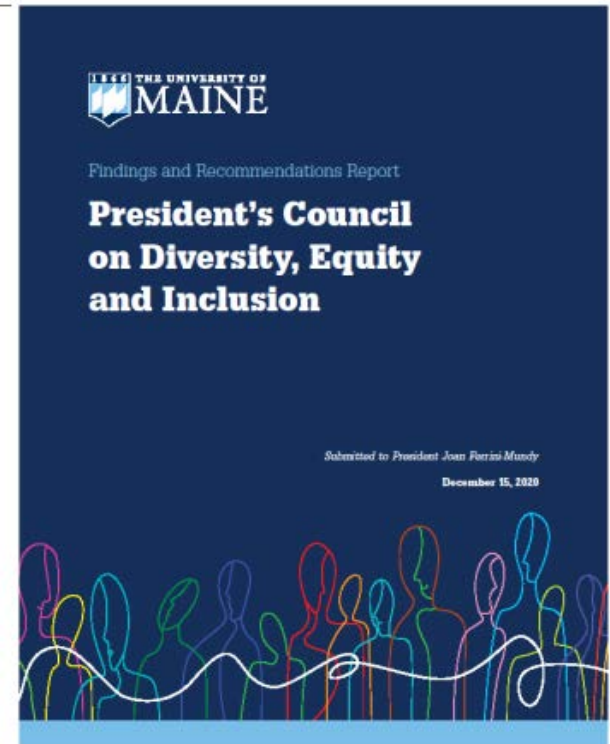
# We are making progress on many fronts

\$125.2M  
in grants

\$165.1M  
in research  
expenditures



TOPPING OFF CEREMONY



UM/UMM Primary Partnership



# We are forging ahead with new initiatives



**President's Commission on  
Excellence and Equity at the  
University of Maine 2025**

**Umaine Portland Research Gateway**







UNIVERSITY OF MAINE SYSTEM

TRANSFORMS  
**TRANSFORMS**  
*Maine's Public Universities*

1



**Black Bear  
Athletics**  
(\$90M/\$20M match)

2



**Student  
Success and  
Retention**  
(\$20M/\$25M match)

3



**Maine College  
of Engineering,  
Computing, and  
Information  
Science**  
(\$75M/\$75M match)

4



**Maine  
Graduate and  
Professional  
Center**  
(\$55M/\$50M match)



# UMaine Athletics Facilities Master Plan





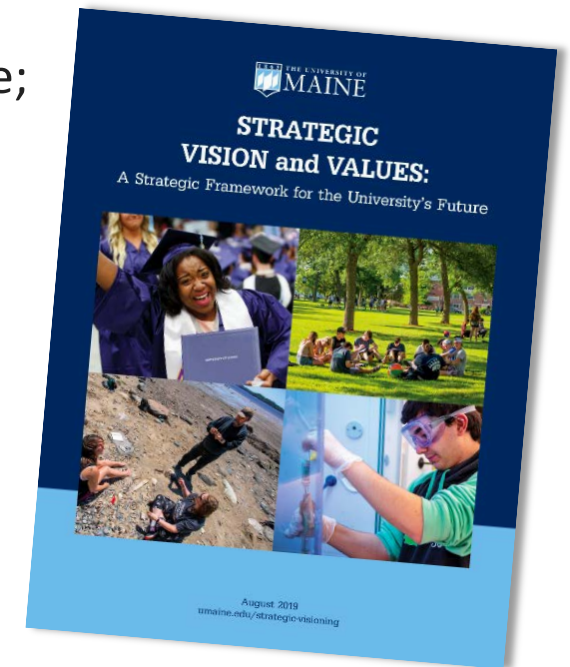
# The pandemic has been costly at UMaine

- Approx. \$21M of lost net E&G and auxiliary revenues
- \$30+M of lost productivity and research revenue
- COVID-related costs to date is \$6.4M. significantly more testing costs during the spring semester
- Challenges for students, faculty and staff have been tremendous
- Mental health issues on the rise



# We are committed to a philosophy for strategic budget development and execution.

- Uses Strategic Vision and Values as a base (<https://umaine.edu/visionandvalues/>)
  - **Goal one:** support and grow Maine's economy, new discoveries and workforce
  - **Goal two:** accessible and affordable education, research, and service - efficiency, effectiveness, quality
  - **Goal three:** rewarding place to live, learn, and work; diverse and inclusive; personal development for all
- Inclusive and transparent process
- Increased convergence and interdisciplinarity
- Use affordances of unified accreditation
- Strategic reductions and incentives for growth







**Thank you!**

**[joanferrinimundy@maine.edu](mailto:joanferrinimundy@maine.edu)**