

# Carnegie R1 Designation

*What does it mean, now and in the future?*



Town Hall | May 20, 2022 | Stodder Hall



# What does the R1 designation mean?

---



Shorthand for 'Research 1'  
"Very High Research Activity"

"R1" is the highest rank awarded by the Carnegie Classification of Institutions of Higher Education.

Earning the designation is a significant milestone to earn it, UMaine: **grew** annual research expenditures, **expanded** its graduate studies, and **increased** national and international recognition for its research.

We stated and planned for UMaine's R1 aspirations.

---

*“Achieving R1 status will be of significant importance to the entire state and will allow UMaine to reach its full potential as Maine’s research university of global impact and local relevance, building and supporting Maine’s economy and workforce needs”*

UMS R&D Plan - FY 20 to FY 24

# We reached record R&D funding levels.

**\$133.6M**

R&D funding for FY21

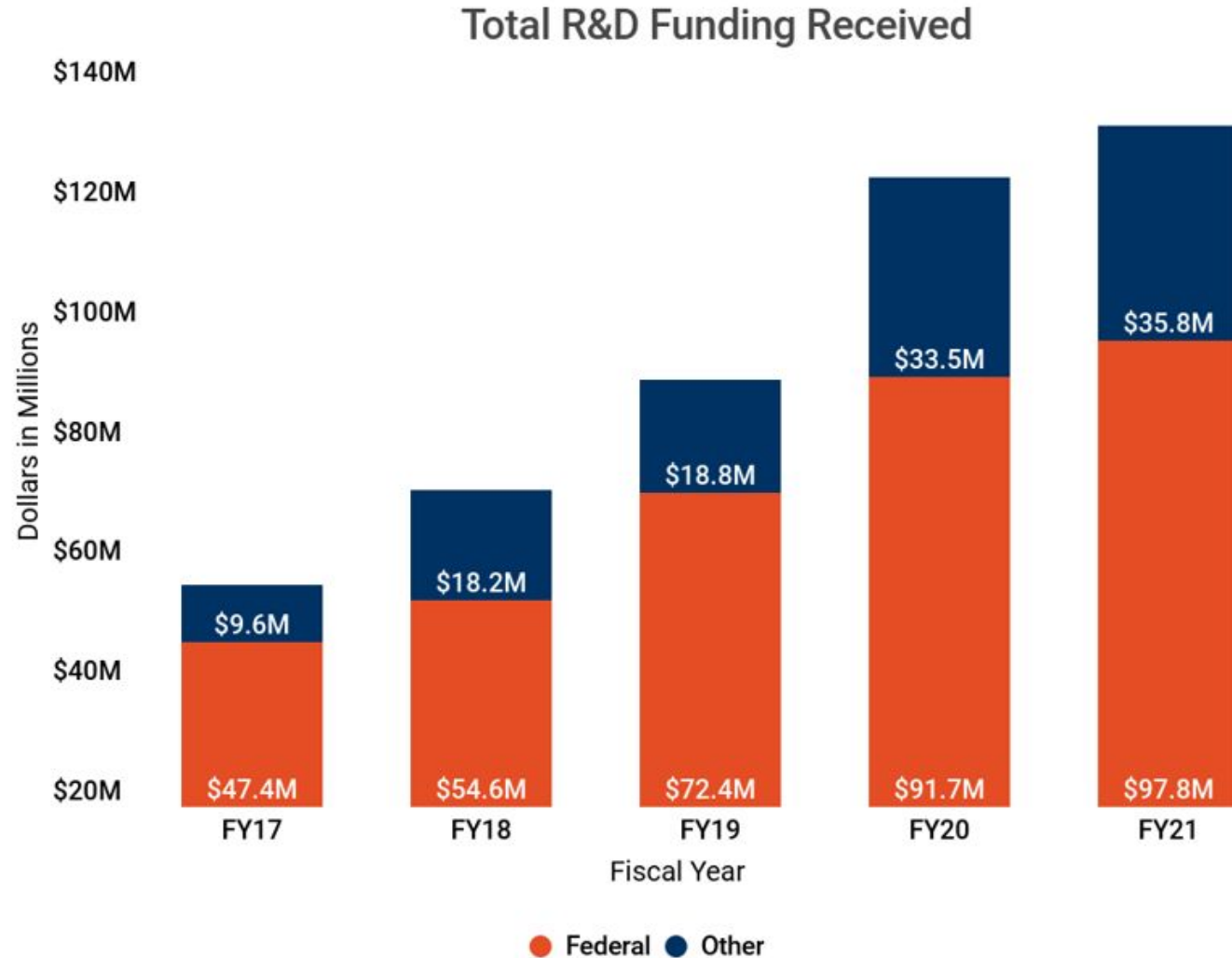
**\$179.3M**

R&D expenditures for FY21

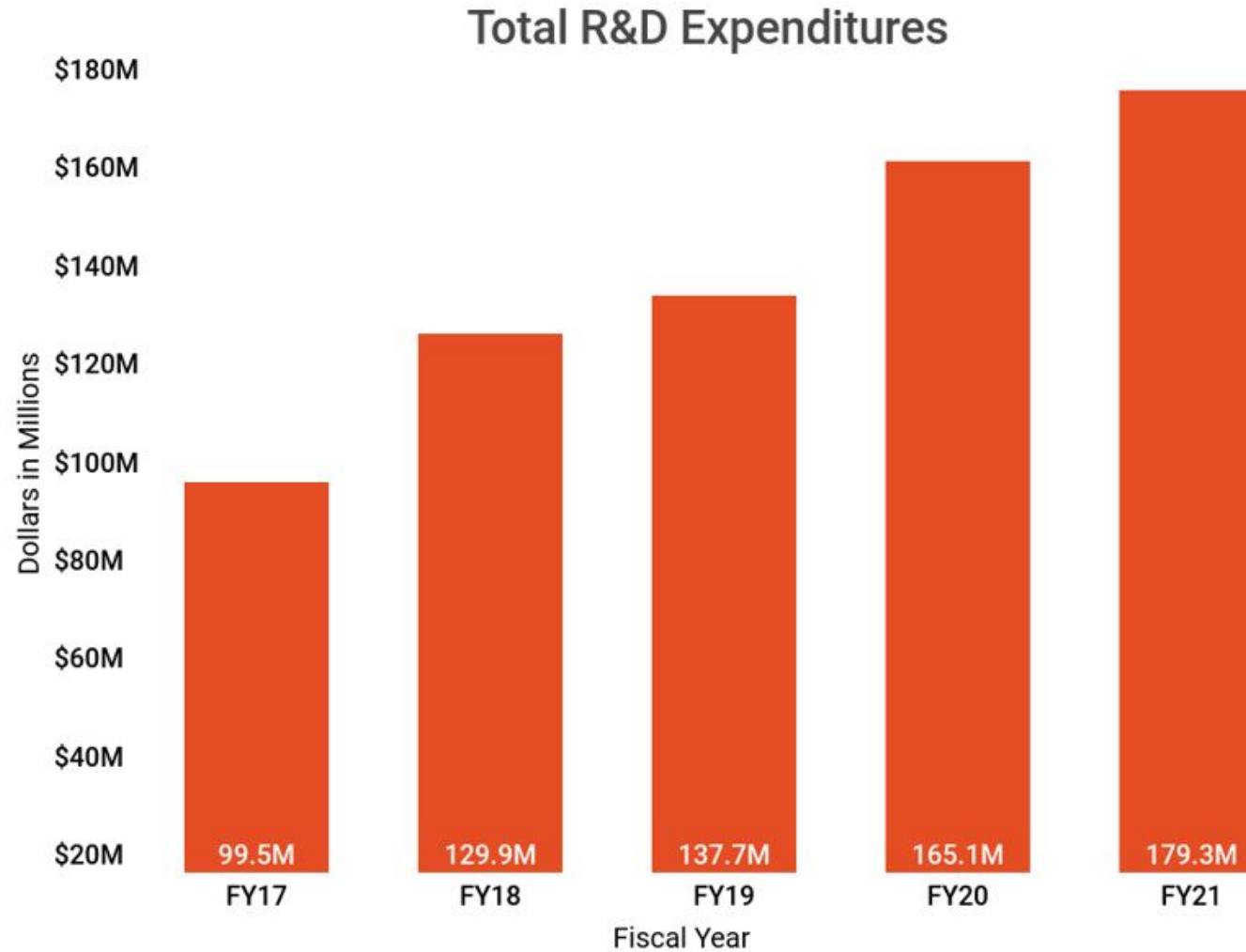
**80.2%**

R&D expenditures  
growth over the last 5  
years

# We reached record R&D funding levels.

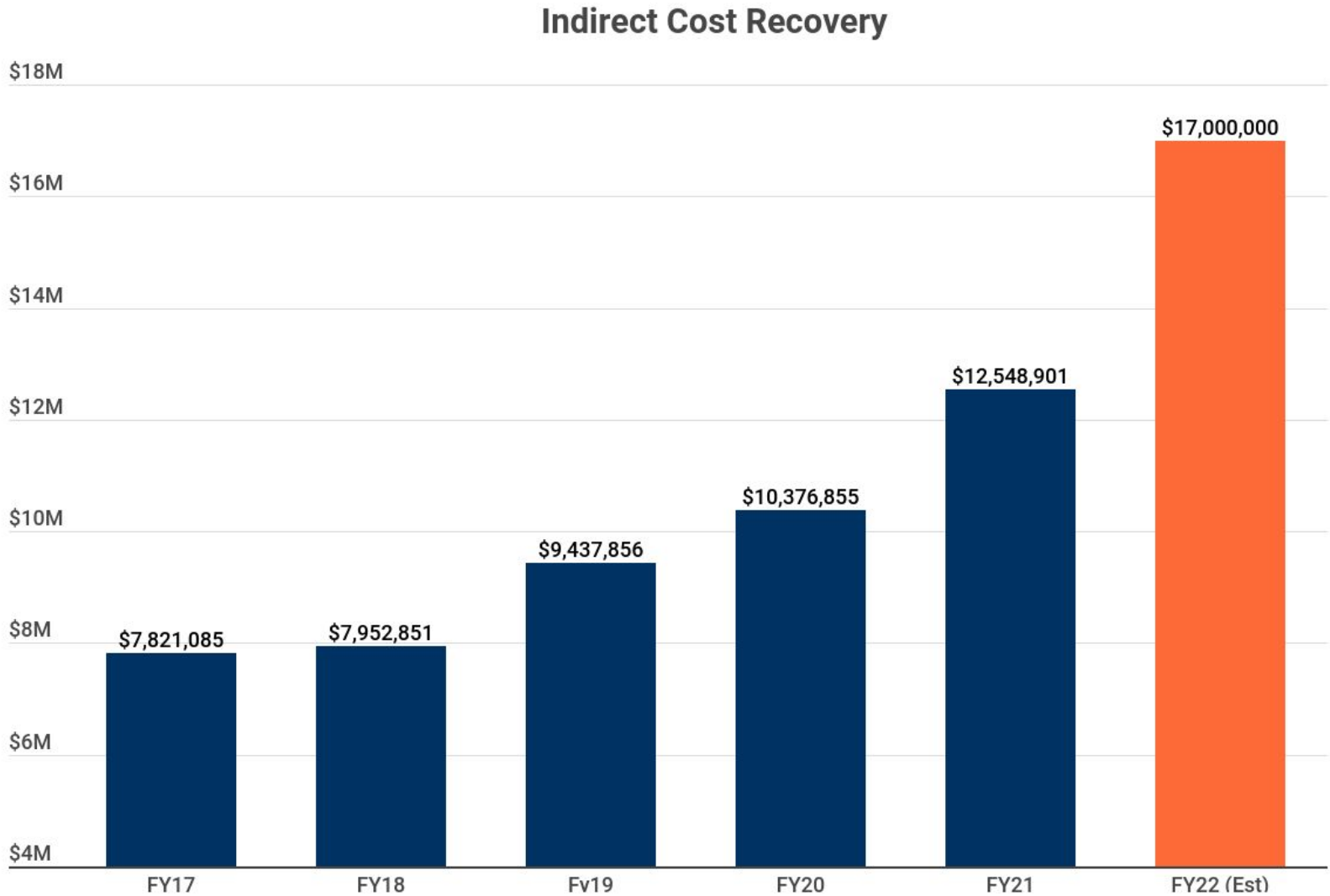


# We reached record R&D funding levels.



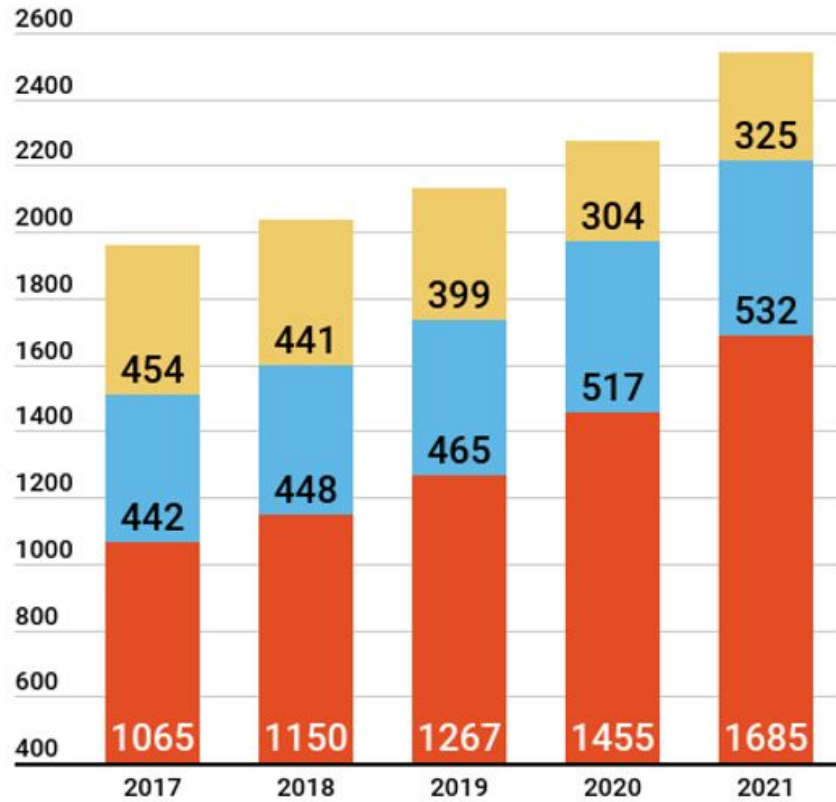
# Record R&D funding levels led to record IDC returns.

In FY 22 and 23,  
4% of Indirect Costs  
will be returned to PIs



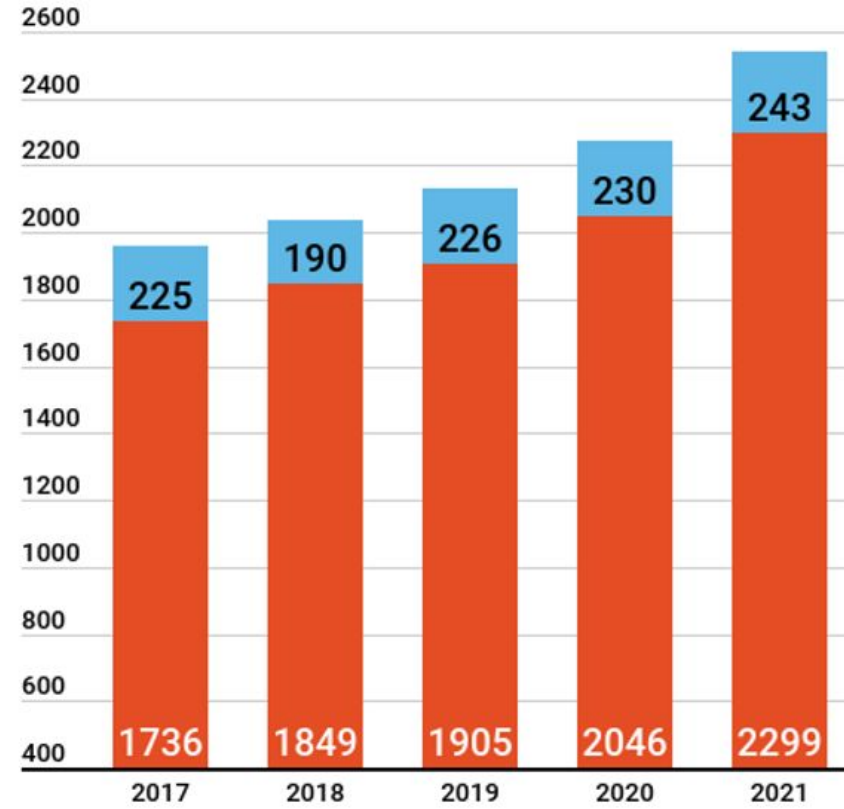
# We strengthened our graduate programs.

### Graduate Enrollment (Fall) by Degree



● Master's ● Doctoral ● Other

### Graduate Enrollment (Fall) by Nationality



● US ● International



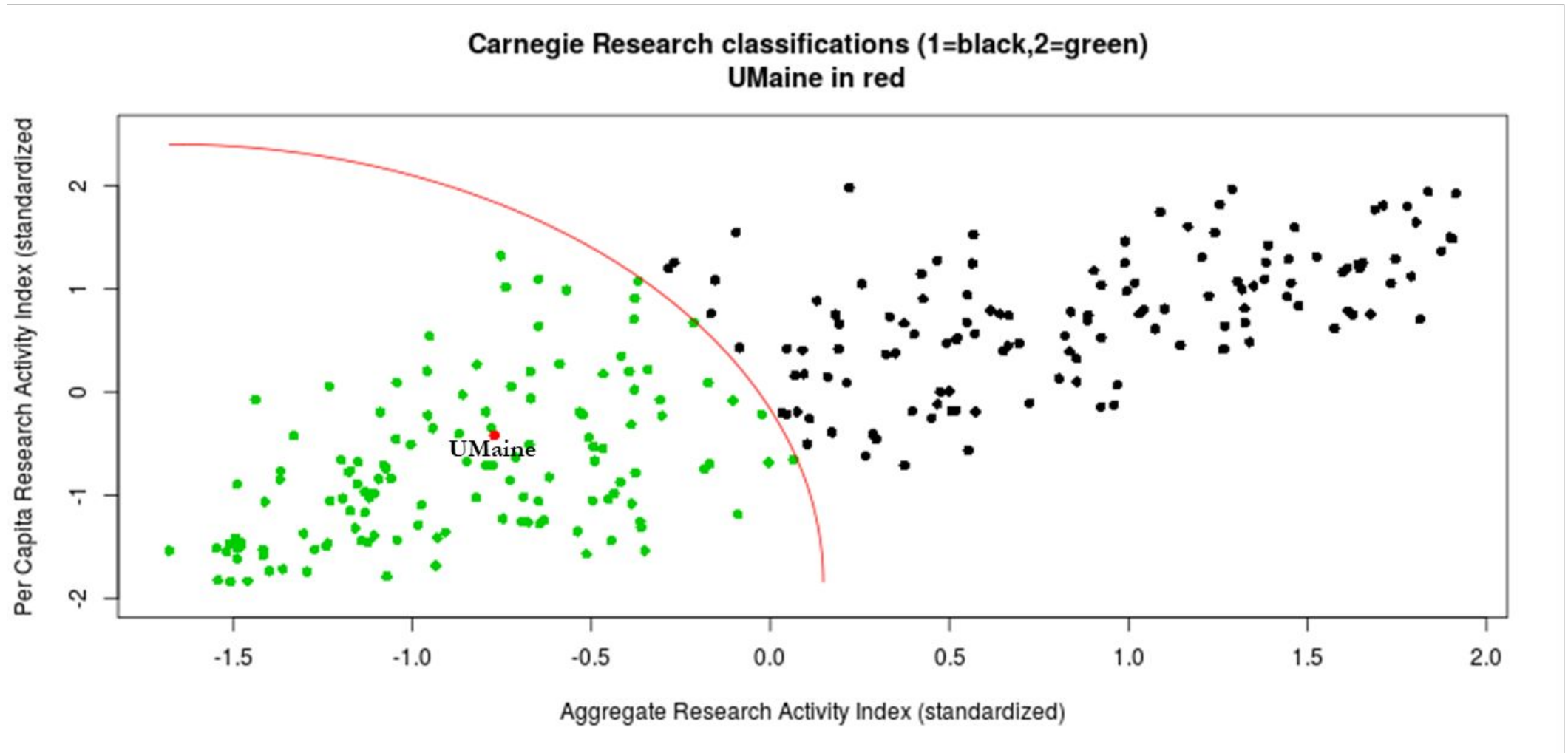
# We relied on growth in key areas.

## Research and Graduate Education

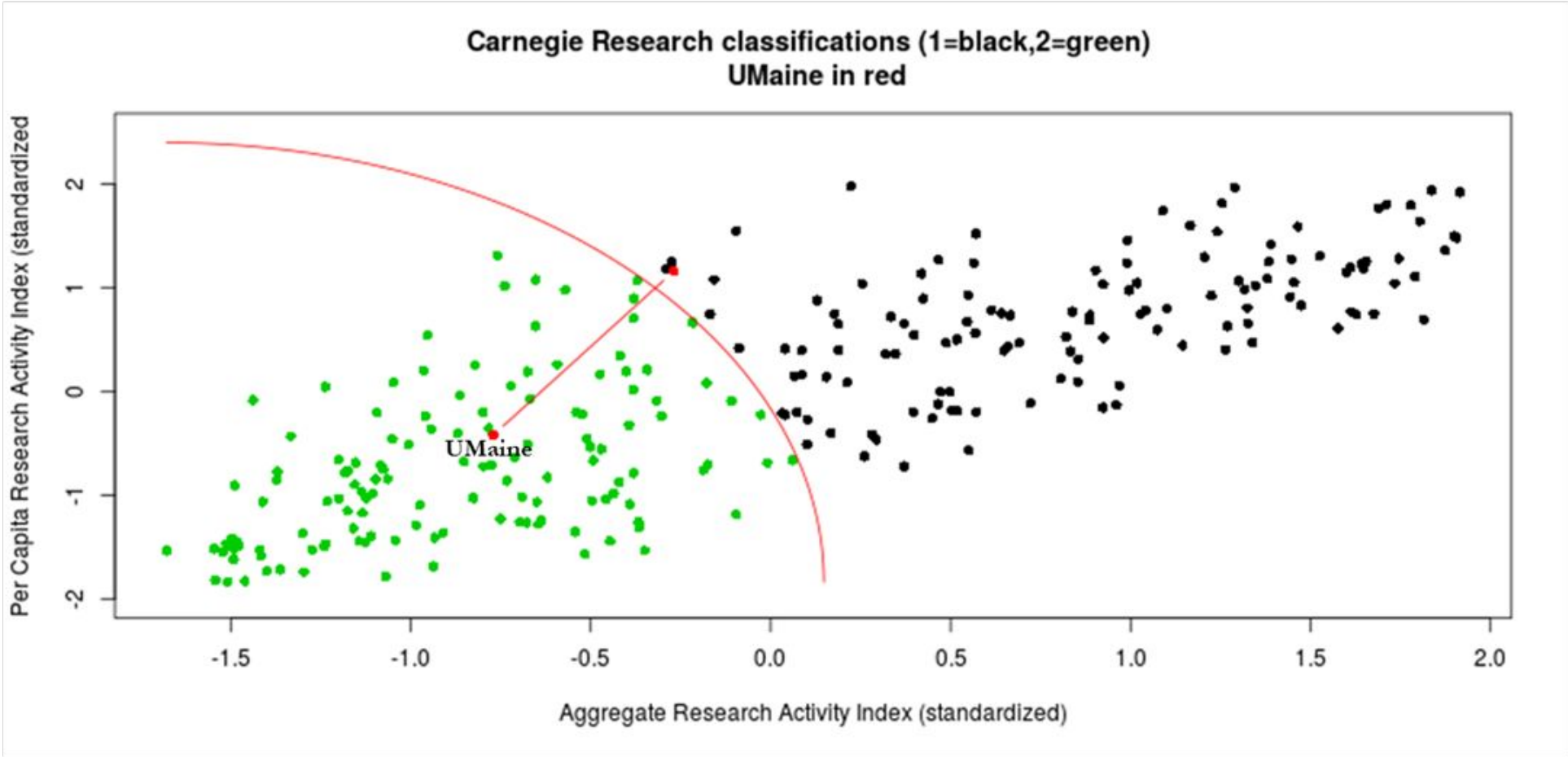
- R&D expenditures in Science and Engineering and in non-Science and Engineering
- R&D staff with doctoral degrees
- Number of faculty
- Doctoral degrees awarded in STEM, Humanities, Social Sciences, and Other fields.

Fiscal Year	Total R&D (M)	S&E R&D (M)	Non-S&E R&D (M)	Res. Staff	STEM	Human.	Social Sci.	Other	Faculty
FY 17	\$99.502	\$98.748	\$0.754	19	38	4	6	10	424
FY 19	\$129.913	\$121.621	\$8.292	136	52	6	5	6	437
FY 20	\$134.183	\$124.999	\$9.184	157	45	5	3	9	452

# Our R2 Designation was based on FY 17 numbers.



# Our R1 Designation was based on FY 19/20 numbers.



# We are amongst an elite group of institutions.

---

# 146

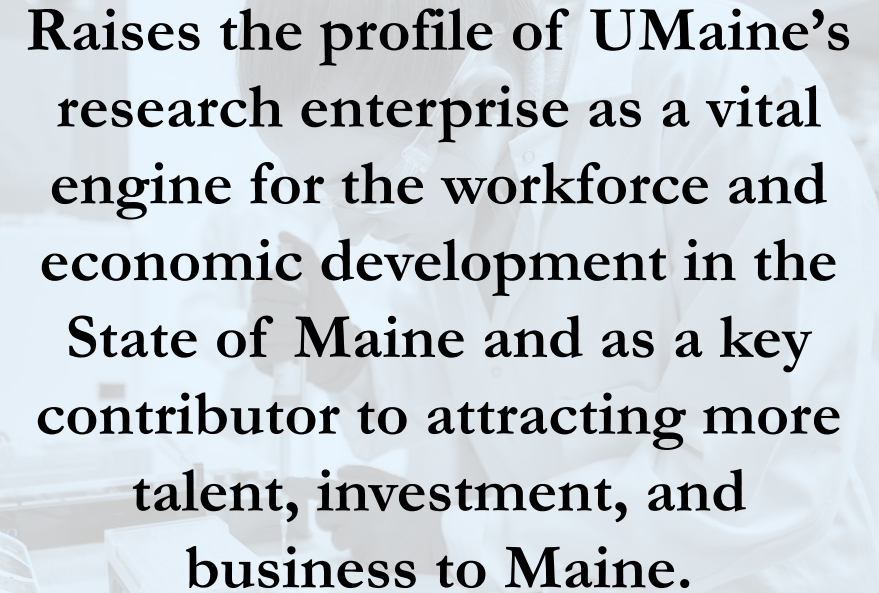
R1 institutions in the country

- Only 146 R1 institutions out of 3,982 post-secondary degree-granting institutions in the US  
**UMaine in top 3.7%**
- Of 146 R1s, only 55 have no medical schools out of 3790 institutions in the US  
**UMaine in the top 1.4%**
- Only 102 public R1s out of 1,626 public institutions  
**UMaine in top 6.3%**

# We enjoy the many benefits of the R1 designation.

---

- Communicates a standard of excellence
- Elevates UMaine's stature
- Reflects the success and excellence of UMaine faculty, staff, and students
- Significantly impacts undergraduate and graduate recruitment
- Provides access to students from Maine and beyond to a nationally recognized research university
- Increases the value of a UMaine degree
- Positively impacts the recruitment and retention of top faculty
- Strengthens faculty visibility and recognition



**Raises the profile of UMaine's research enterprise as a vital engine for the workforce and economic development in the State of Maine and as a key contributor to attracting more talent, investment, and business to Maine.**

# We continue to plan for enduring success.

---

The next round  
of Carnegie  
classifications  
takes place in  
2024.

In order to retain and strengthen our status,  
UMaine must:

- Grow R&D expenditures
- Grow R&D staff with doctoral degrees
- Grow doctoral graduates

**We look forward to your input and partnership.**

---

What should UMaine's goals and aspirations be as an R1 university as compared to when it was an R2 university?

What should UMaine's long-term strategy for investment and growth be to ensure the sustainability of its research excellence and R1 recognition?

We welcome additional questions, comments, and observations.

# **R1**

DEFINES  **TOMORROW**

<https://umaine.edu/research/r1/>