

# Maine Offshore Ocean Energy Demonstration Siting Initiative



**Robert G. Marvinney**  
**Director, Maine Geological Survey**  
**Department of Conservation**

# Purpose and Timeline

- **Legislation**
- **Siting Requirements**
- **DOC and SPO: Conduct Collaborative Process**
- **Scoping Meetings, Public Meeting**
- **December 15 Deadline**

# SITING REQUIREMENTS

## DEMONSTRATION SITE



Photo courtesy of Statoil Hydro

## COMMERCIAL WIND FARM



# OFFSHORE WIND

- Maine's Niche: Aided By Geography
  - Deep Water
  - Proximity to the Gulf of Maine – Superb Wind Resource
  - Deepwater Ports and Infrastructure: Eastport, Searsport, Portland, etc
- Existing Industrial Partners
- Ideal Research Partner: **University of Maine**

# LONG TERM OPPORTUNITY

## Large Projects Offshore in the Gulf (>20 miles)



Photo Courtesy of Gizmag.com



Photo Courtesy of Civil.usyd.edu

Maine People Research



# LONG TERM OPPORTUNITIES

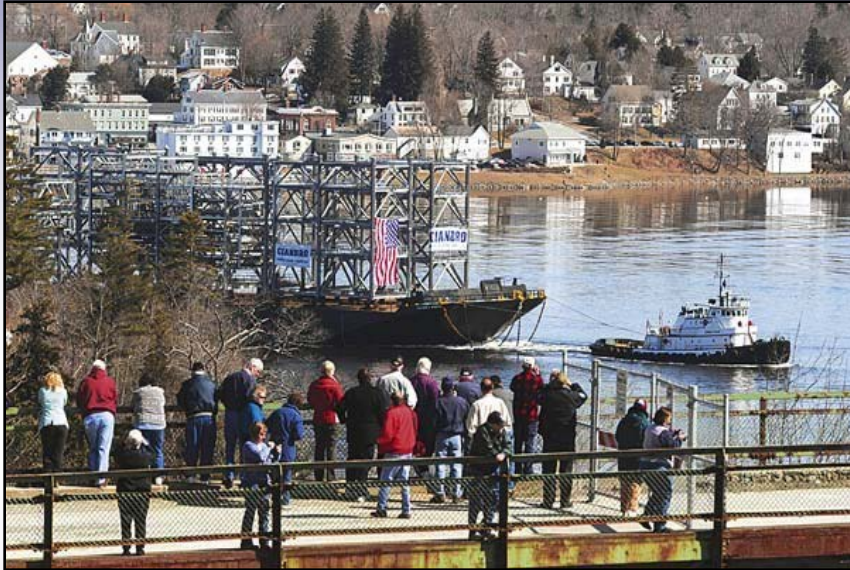


Photo Courtesy of Bangor Daily News



Photo Courtesy of New York Times

Maine People Build Platforms, Towers, Blades

# LONG TERM OPPORTUNITIES



Courtesy of the Boston.com



Photo Courtesy of Navytime.com

## Maine People Build Ships



# LONG TERM OPPORTUNITIES



Photo Courtesy of Videopro



Photo Courtesy of MaineToday

Maine People Install and Service



# PLANNING AREAS

Within Maine's Coastal Waters

At least 200 Feet Deep (30 Fathoms)

Average Annual Wind Speeds of >17 MPH

No Obstructions

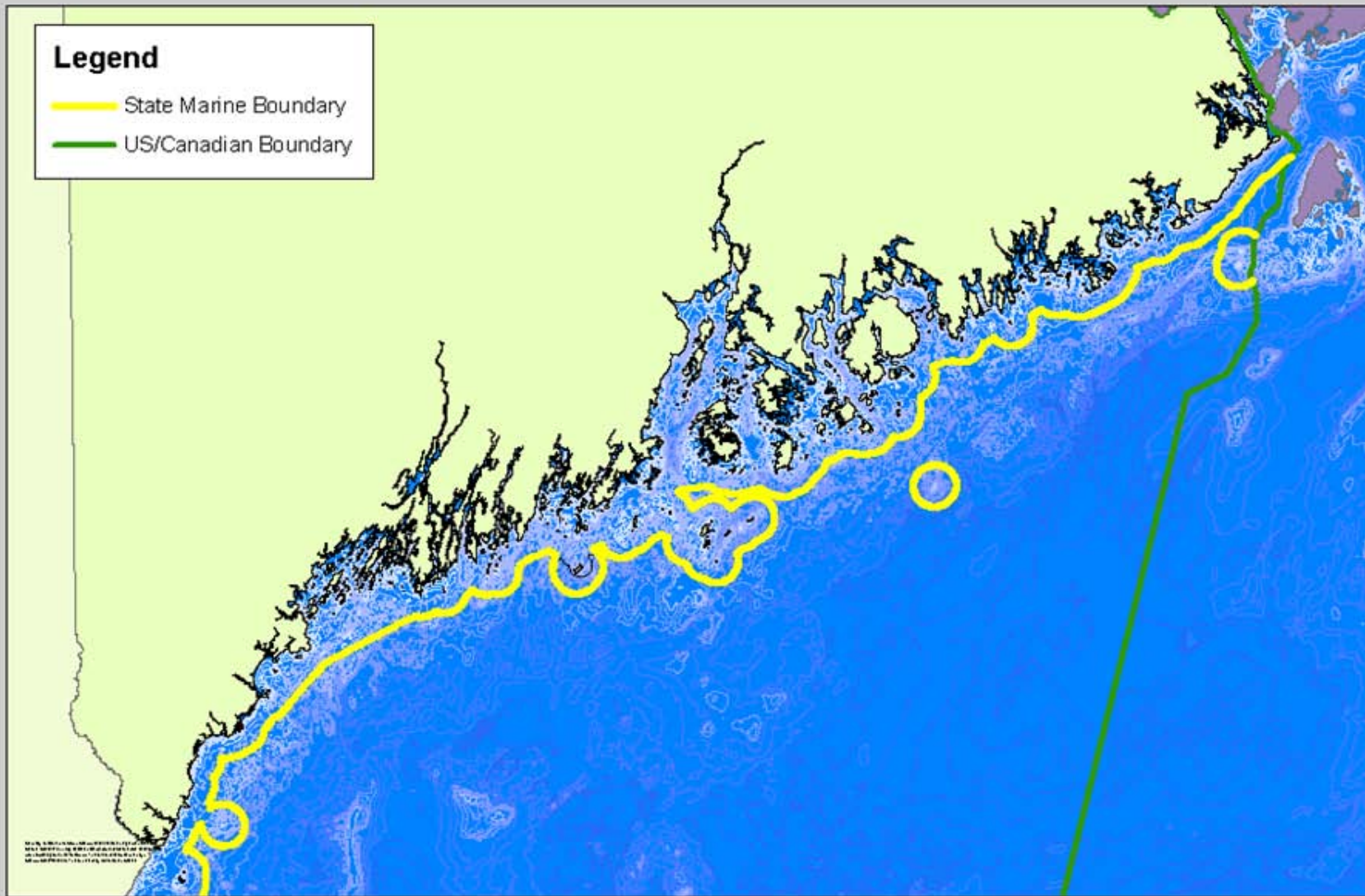


# Maine Marine Boundaries



## Legend

- State Marine Boundary
- US/Canadian Boundary



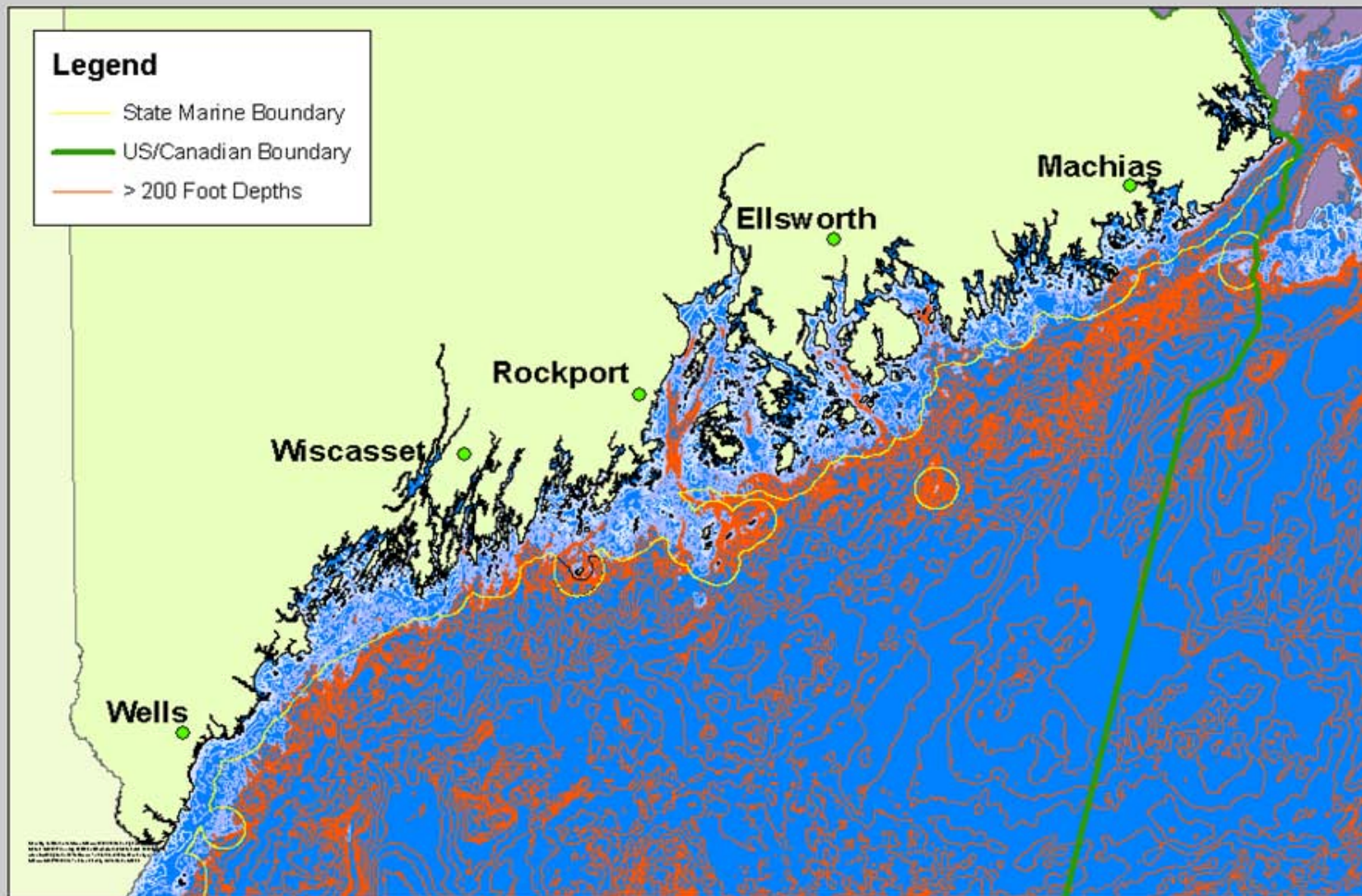


# DEEP WATER (>200 FEET) DEPTHS IN THE GULF OF MAINE



## Legend

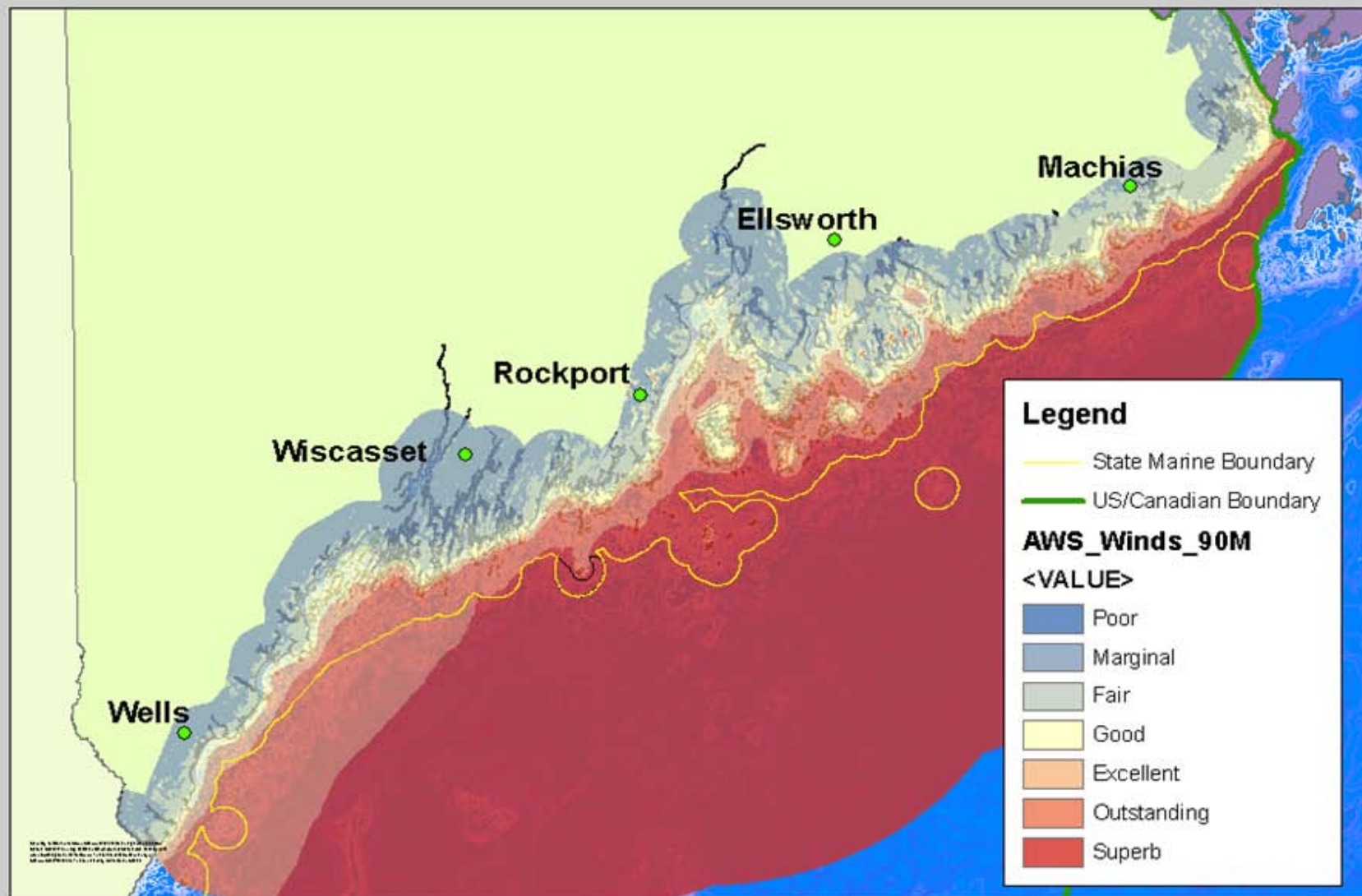
- State Marine Boundary
- US/Canadian Boundary
- > 200 Foot Depths







# WIND RESOURCES IN THE GULF OF MAINE (NREL ESTIMATES)





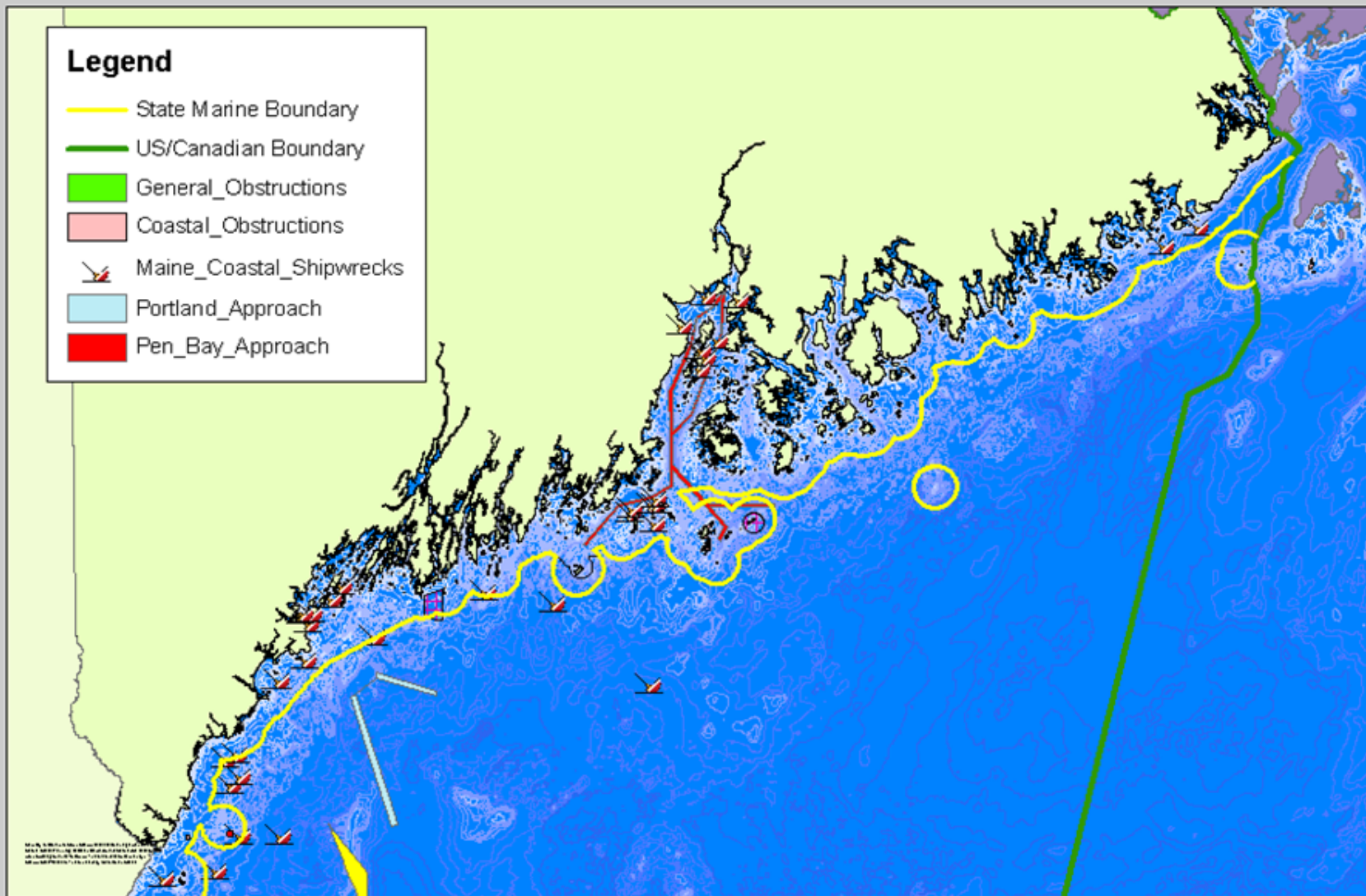


# Maine Coastal Marine Obstructions



## Legend

- State Marine Boundary
- US/Canadian Boundary
- General\_Obstuctions
- Coastal\_Obstuctions
- Maine\_Coastal\_Shipwrecks
- Portland\_Approach
- Pen\_Bay\_Approach



# ALL PLANNING AREAS

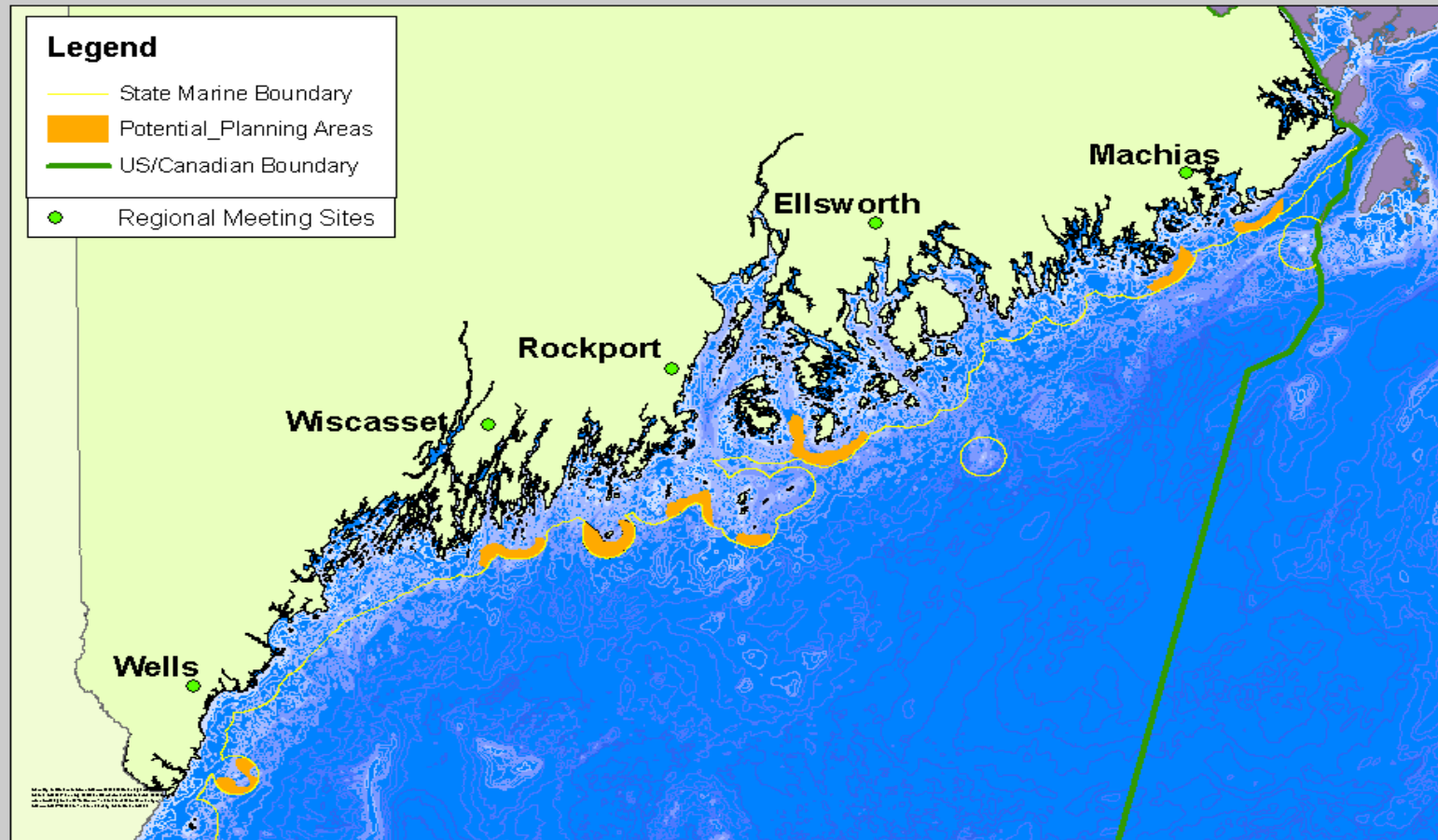


## PLANNING AREAS FOR POTENTIAL OCEAN ENERGY DEMONSTRATION SITES

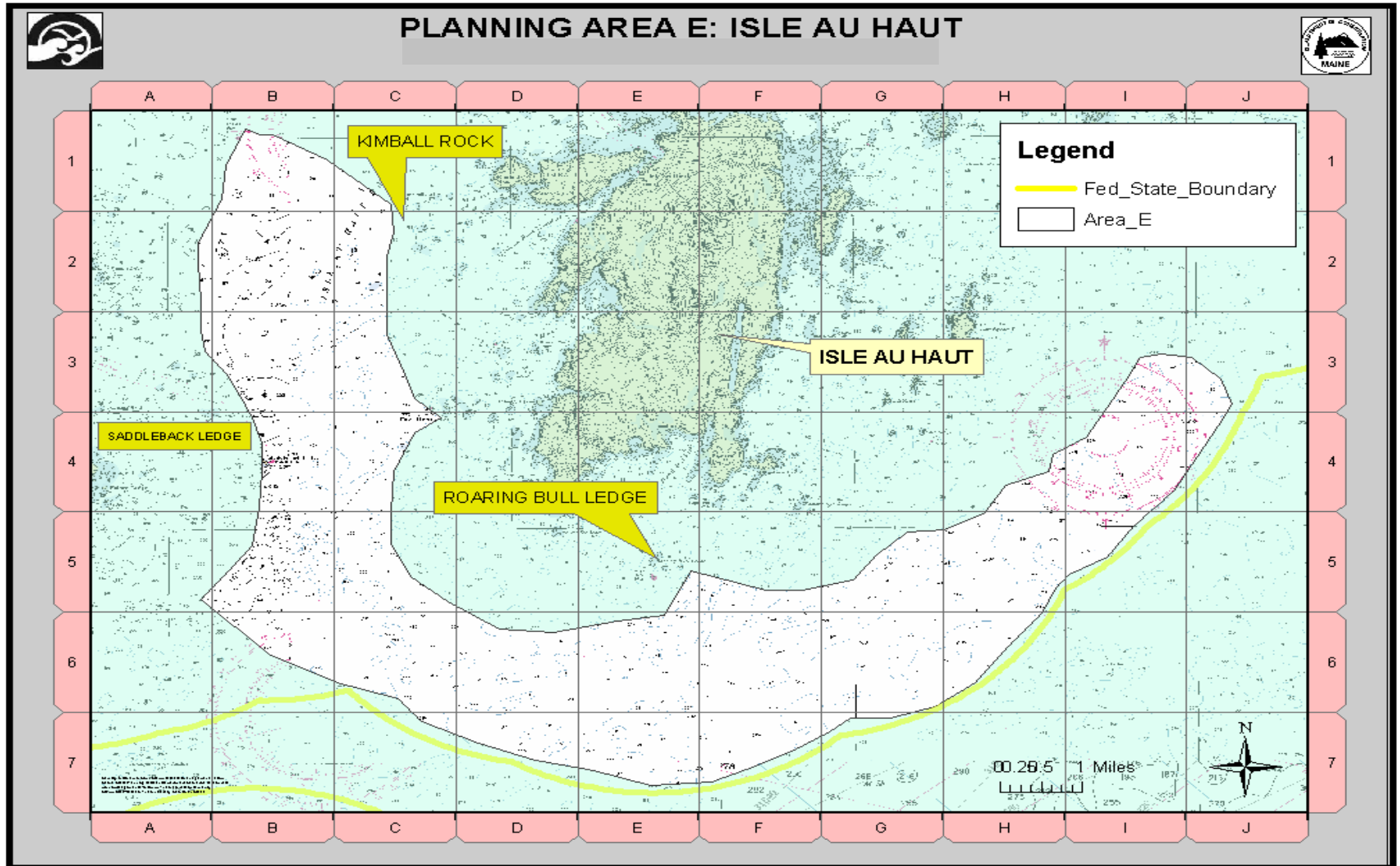


### Legend

- State Marine Boundary
- Potential\_Planning Areas
- US/Canadian Boundary
- Regional Meeting Sites



# SPECIFIC PLANNING AREA



# DEMONSTRATION SITES

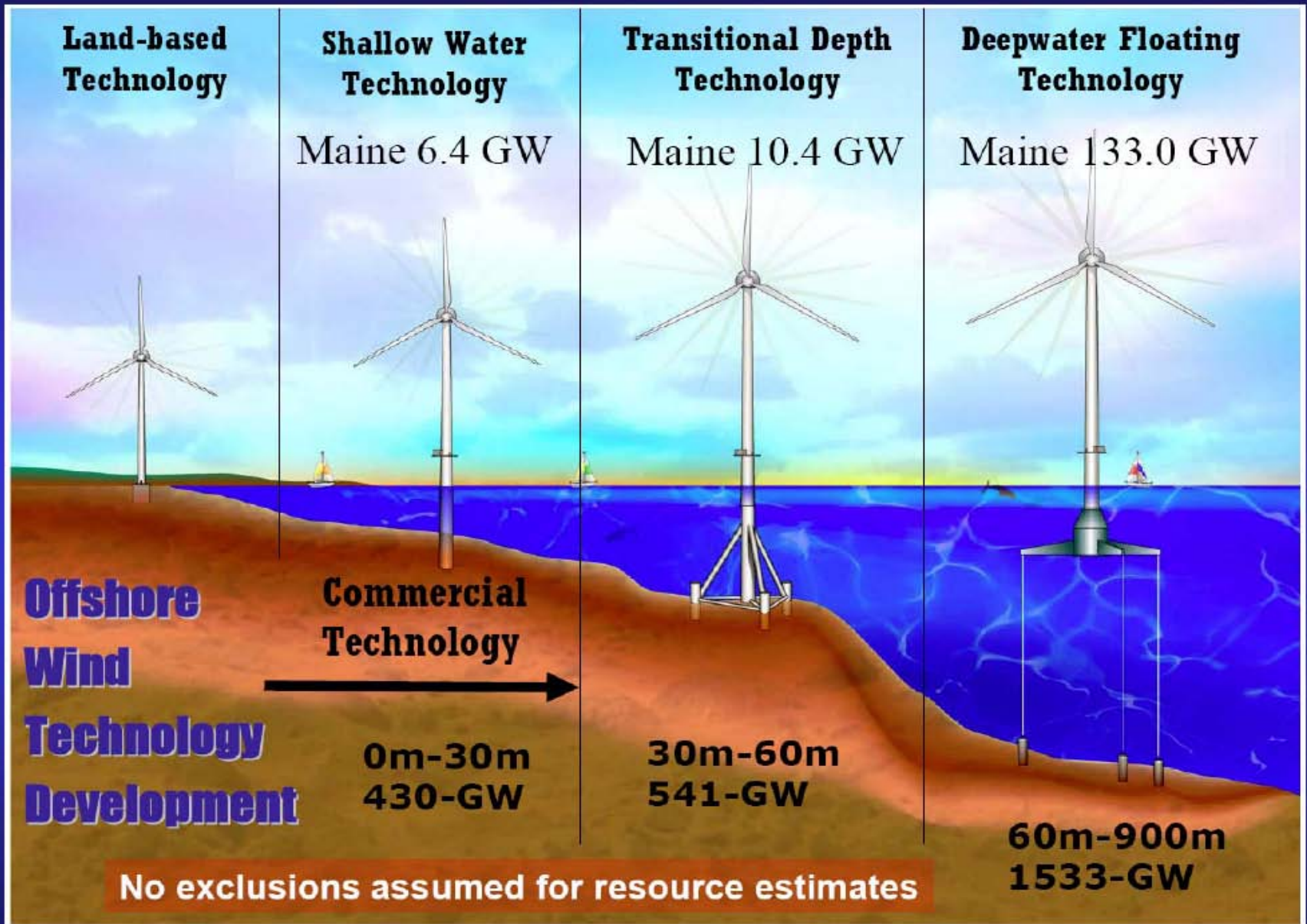
- Initial Mapping: 7 Large “Possible” Areas
- Further Siting Considerations:
  - *Impacts on protected natural resources and scenic resources*
  - *Impacts on marine mammals*
  - *Impacts on commercial fishing and navigation*
  - *Impacts on recreation, existing public access, and other existing uses*
  - *Proximity to deep water port facilities, transportation and transmission infrastructure, and existing environmental monitoring devices*
  - *Geology of the ocean bottom*



# One Developer, Two Turbines, Three Miles From Shore



# WIND TURBINE EVOLUTION



# SUMMARY

- State & National Energy Goals
- Opportunity Now, Jobs To Maine People
- Feedback, Collaboration, Next Steps



Photo Courtesy of Blue H



Photo Courtesy of Principle Power

# NEXT STEPS

- September - Public Meetings continue
- Mid- October - Draft Sites selected
- Oct-Nov - Meet with communities to further explore specific draft sites
- Mid-November – Public comment period closes
- December 15 – Final Sites selected



# **Thank You**

# **Questions?**

**[Robert.G.Marvinney@Maine.gov](mailto:Robert.G.Marvinney@Maine.gov)**

**[www.maine.gov/spo/specialprojects/OETF/index.htm](http://www.maine.gov/spo/specialprojects/OETF/index.htm)**

**<http://www.maine.gov/doc/initiatives/oceanenergy/oceanenergy.shtml>**