



Maine Department of Environmental Protection

Emily Zimmermann
Biologist, Bureau of Water Quality

MAINE DEPARTMENT OF ENVIRONMENTAL PROTECTION

Protecting Maine's Air, Land and Water

A scenic view of a river flowing through a forest with autumn foliage. The river is dark and calm, reflecting the sky and the surrounding trees. The forest is dense with tall evergreen trees and some deciduous trees showing vibrant autumn colors of orange, yellow, and red. The sky is blue with scattered white clouds. In the foreground, there are large, dark rocks partially submerged in the water.

What is Maine DEP?



MAINE DEPARTMENT OF ENVIRONMENTAL PROTECTION

www.maine.gov/dep

Travel!

Adventure!



| | |
|---------|---------|
| CHINA | 7 MI. |
| POLAND | 56 MI. |
| PERU | 58 MI. |
| NORWAY | 63 MI. |
| MEXICO | 69 MI. |
| EGYPT | 73 MI. |
| SWEDEN | 79 MI. |
| DENMARK | 95 MI. |
| LEBANON | 114 MI. |
| SWEDEN | 232 MI. |



Making a difference!

To prevent, abate and control the pollution
of the air, water and land



To protect and enhance the public's right to use
and enjoy the State's natural resources



To preserve, improve and prevent diminution
of the natural environment of the State

How?

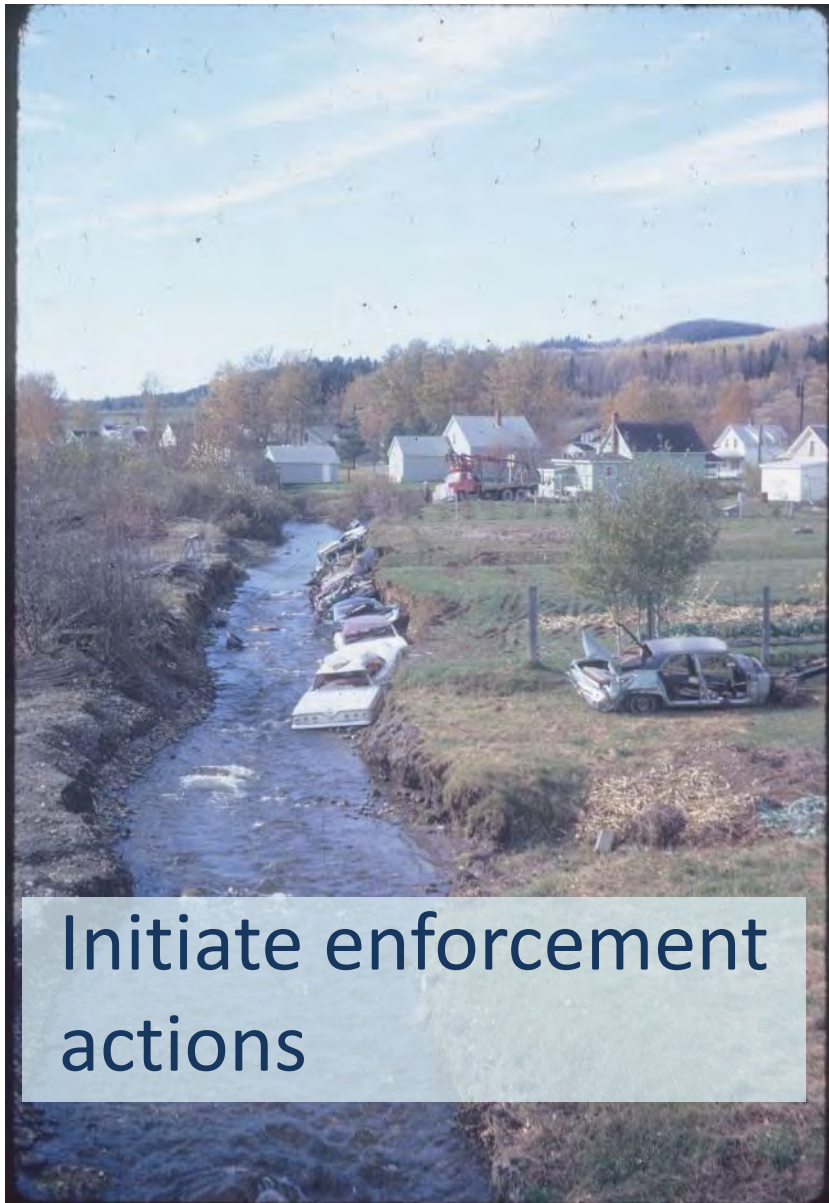


Make recommendations to the legislature

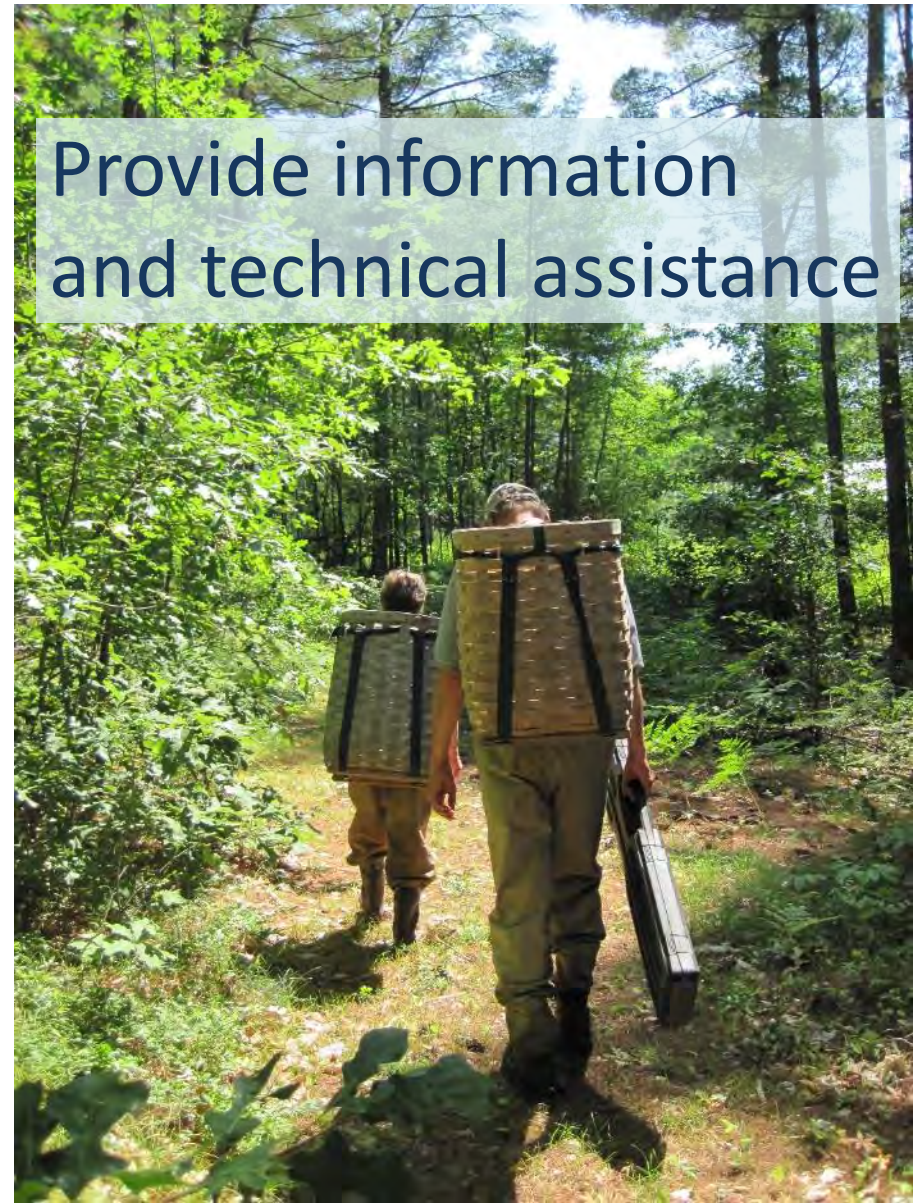


Issue licenses



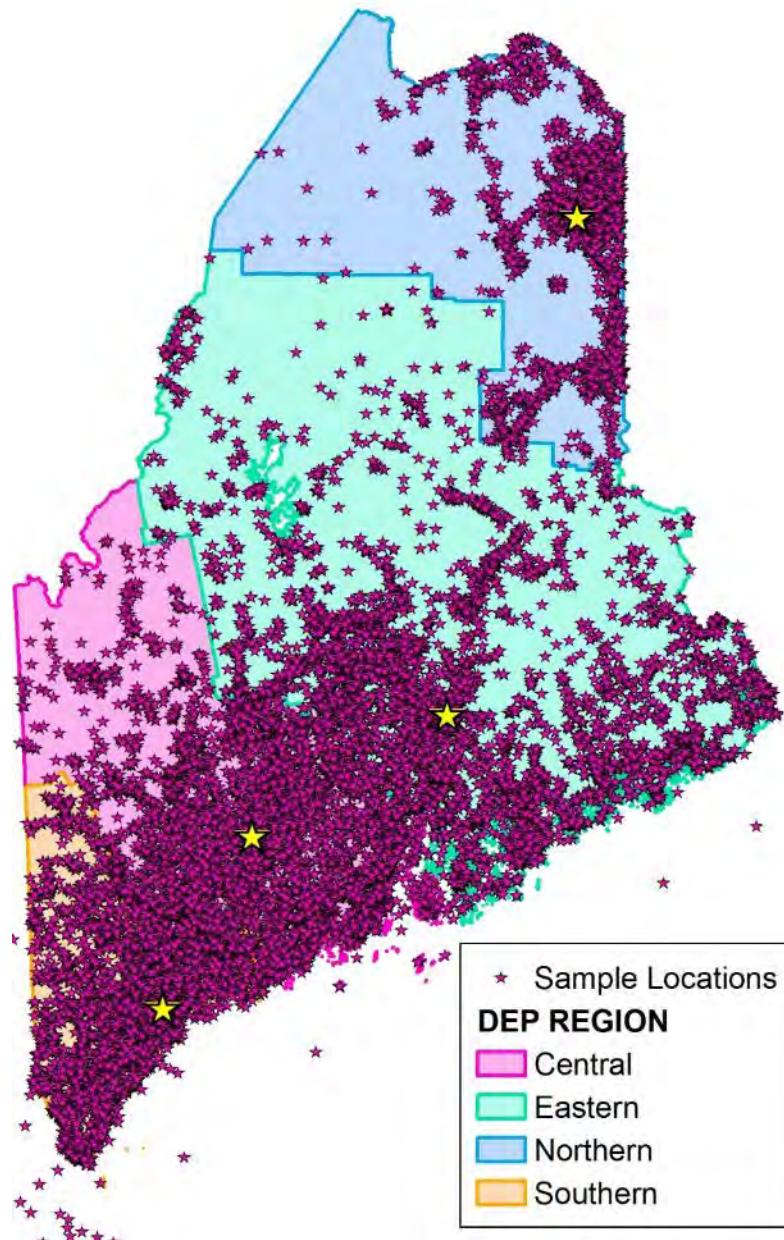


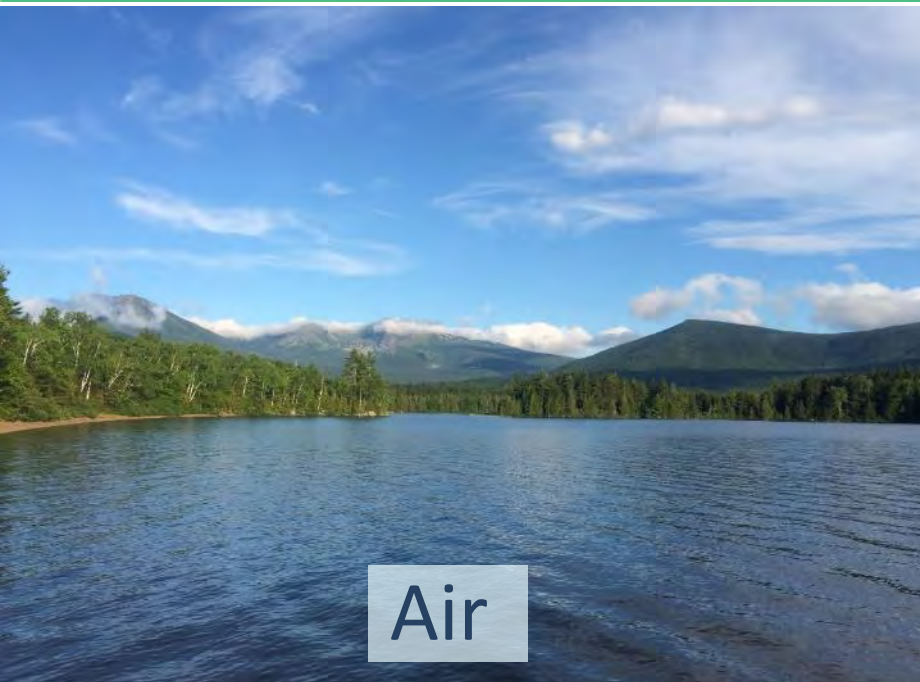
Initiate enforcement actions



Provide information and technical assistance







Air



Land



Remediation and
Waste Management



Water



Division of Water Quality Management

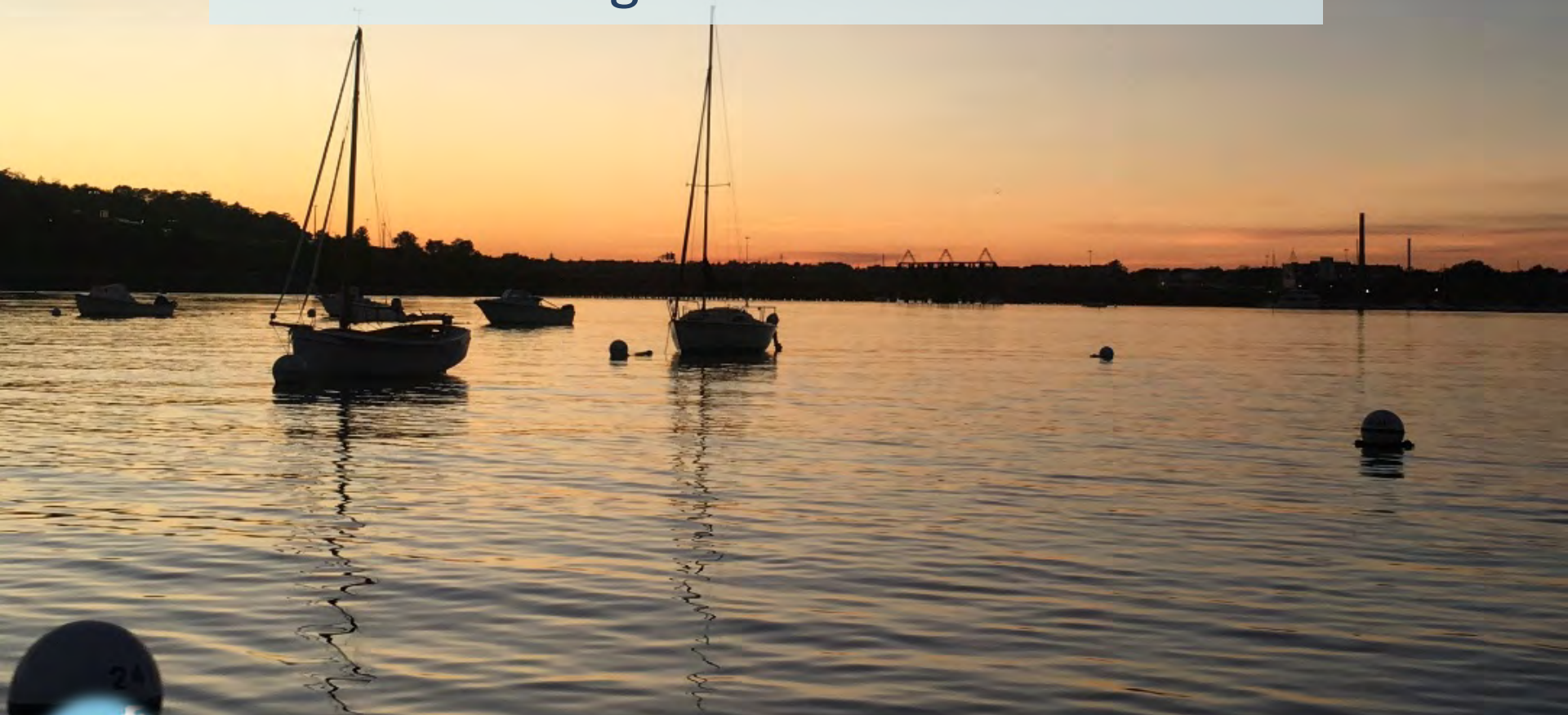
- Wastewater licensing
- Storm water management
- Water enforcement





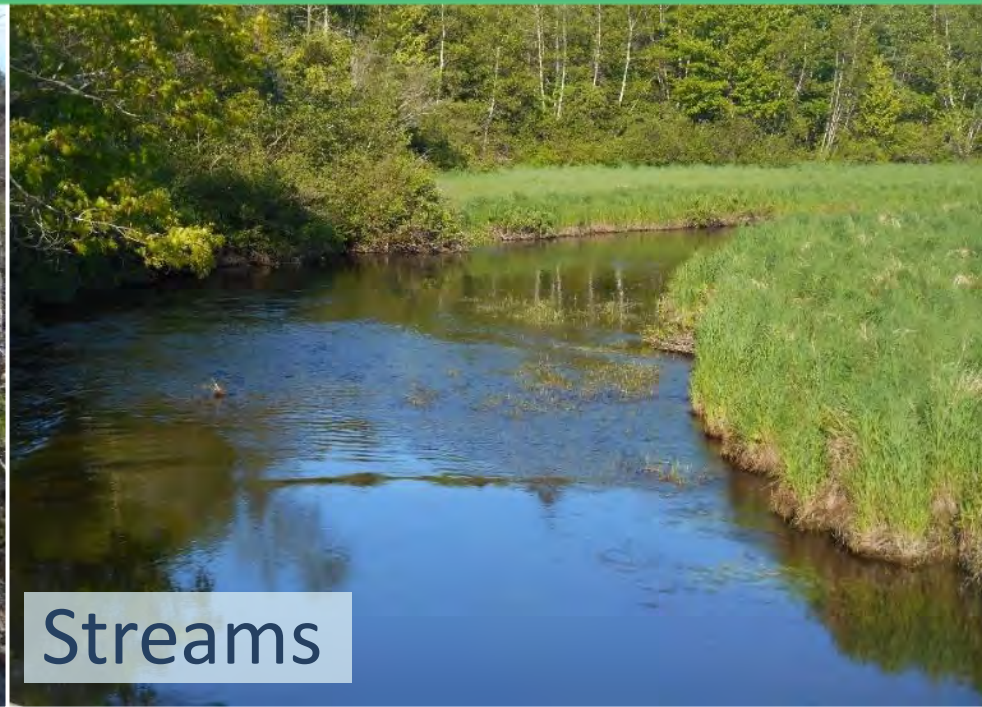
Division of Environmental Assessment

- Water quality standards
- Monitoring health of Maine's waters





Rivers



Streams



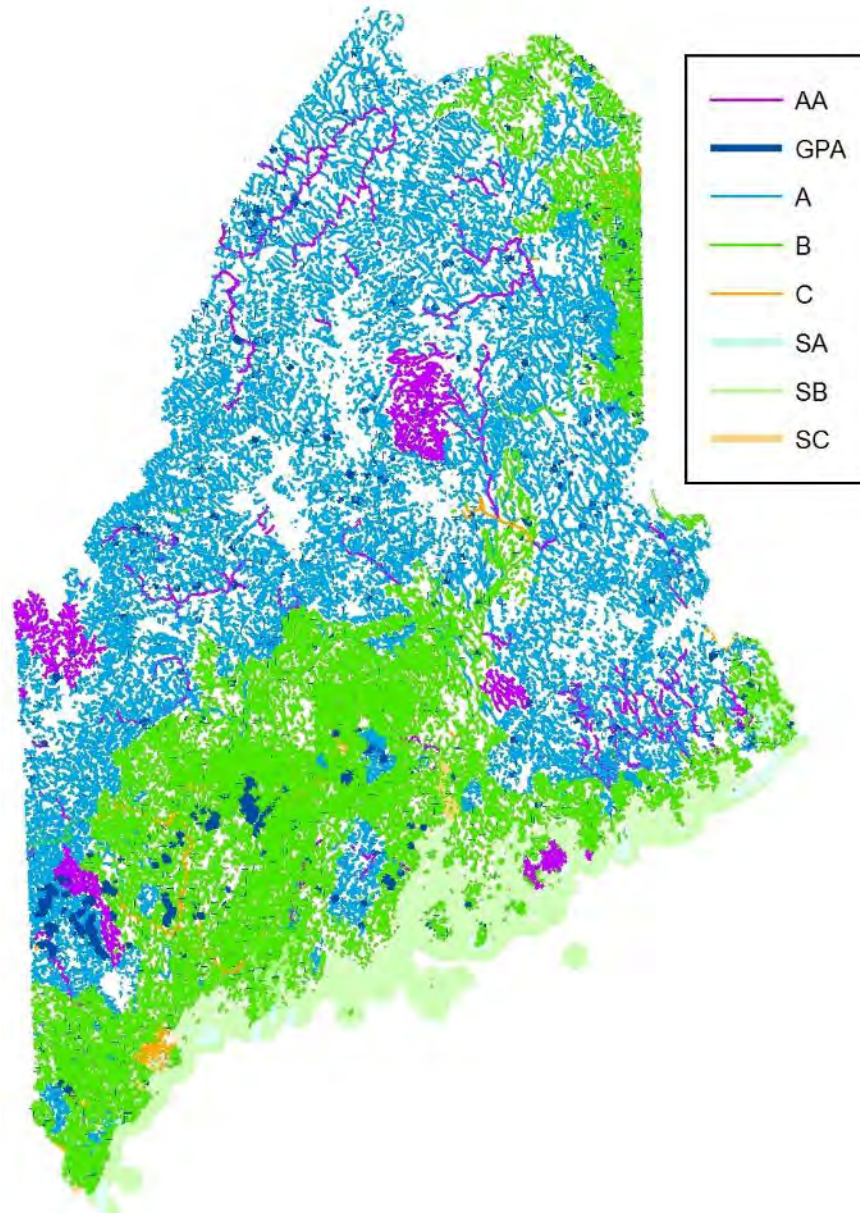
Lakes



Marine



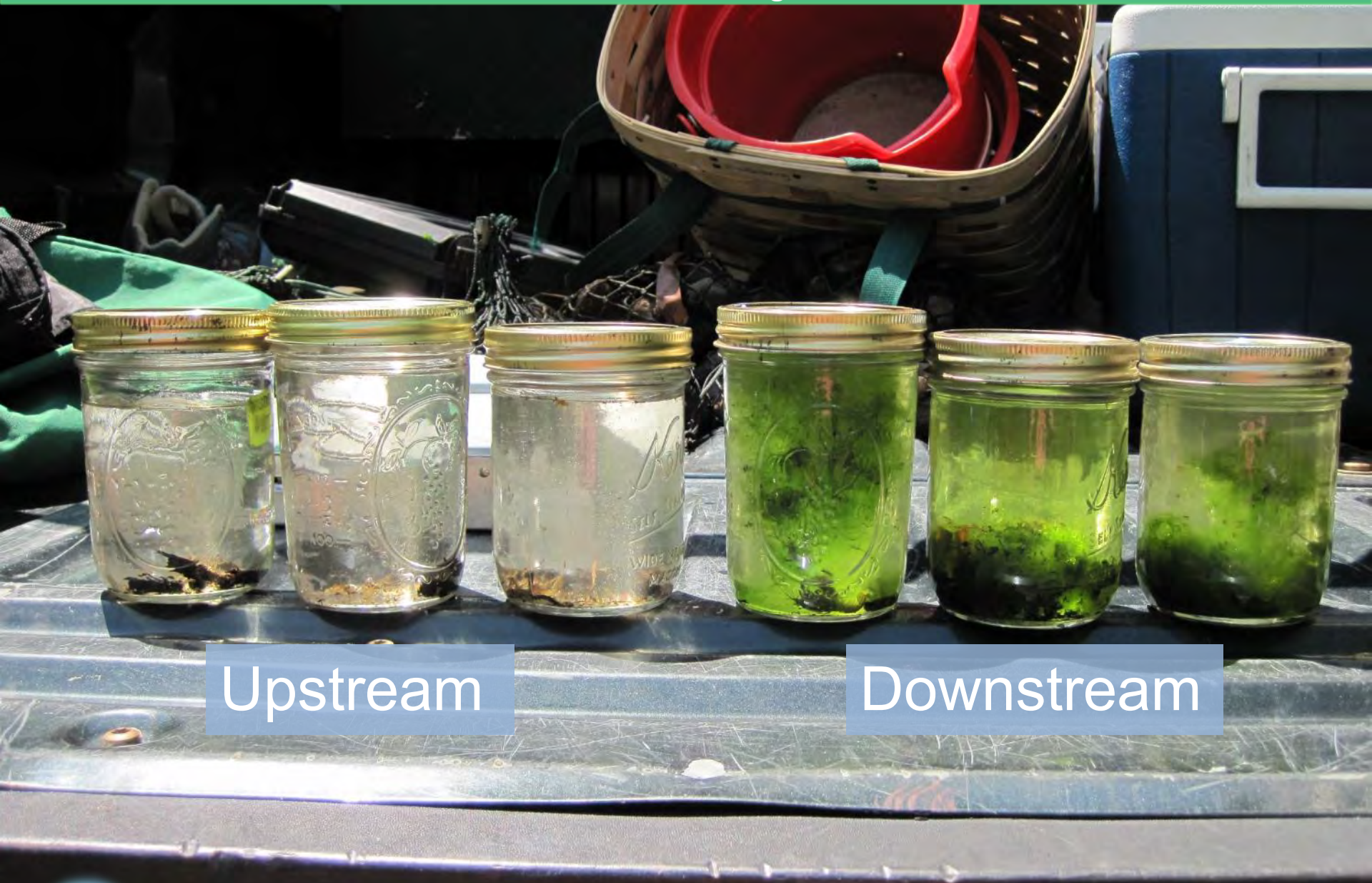
Water Quality Standards





Rivers/streams and Wetlands



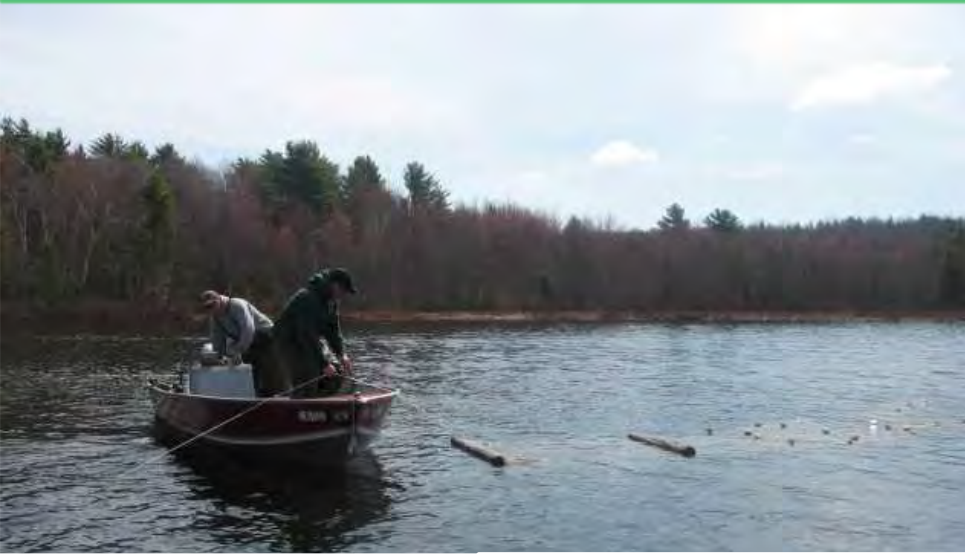


Upstream

Downstream



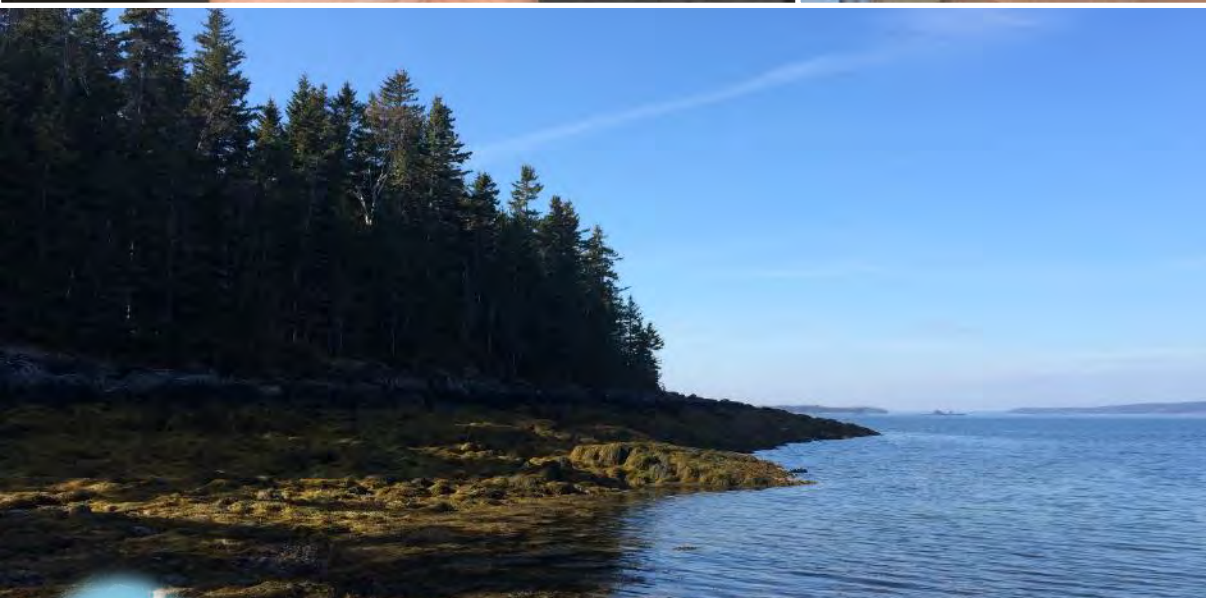
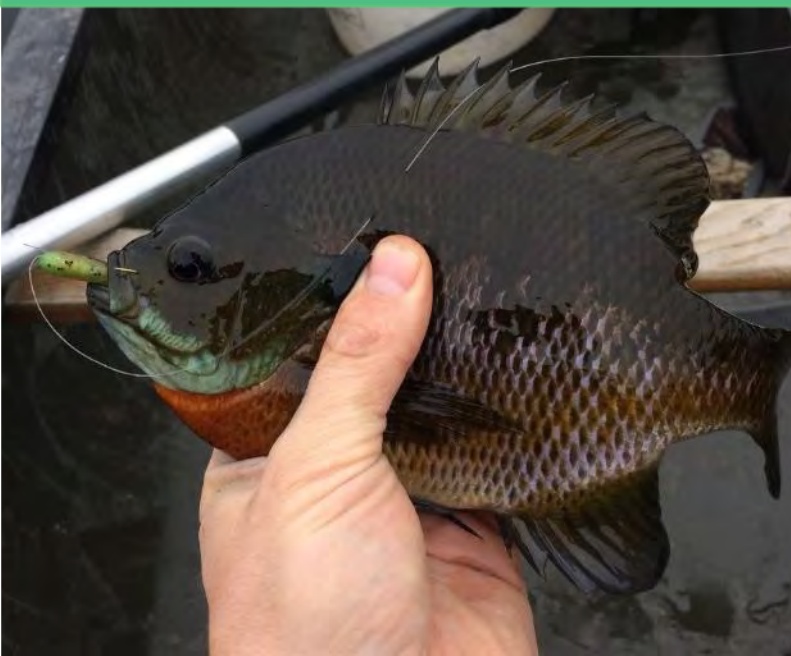
Rivers and Streams



S.W.A.T.



Surface Water Ambient Toxics (SWAT)



Invasive Aquatic Species



MAINE DEPARTMENT OF ENVIRONMENTAL PROTECTION

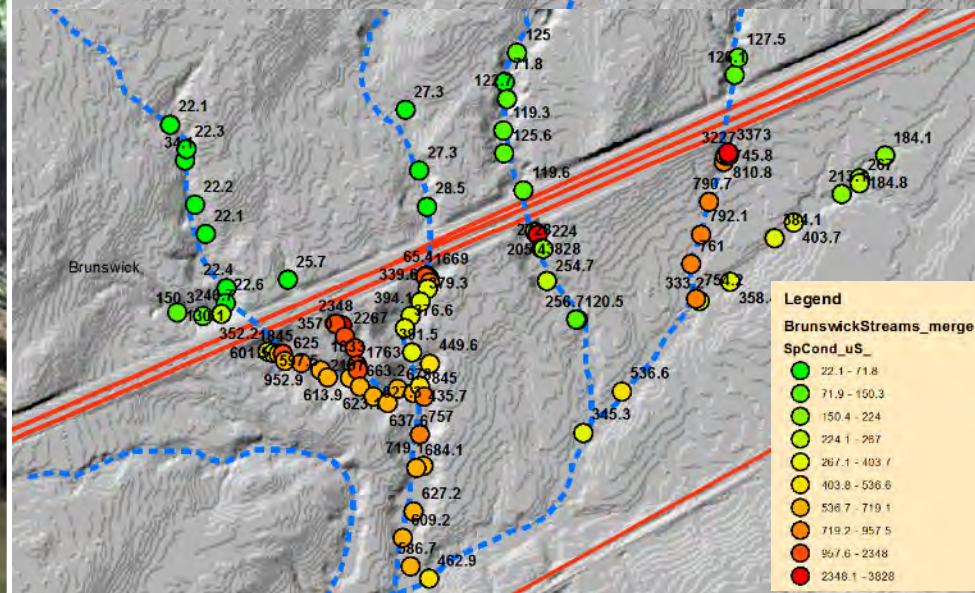
www.maine.gov/dep

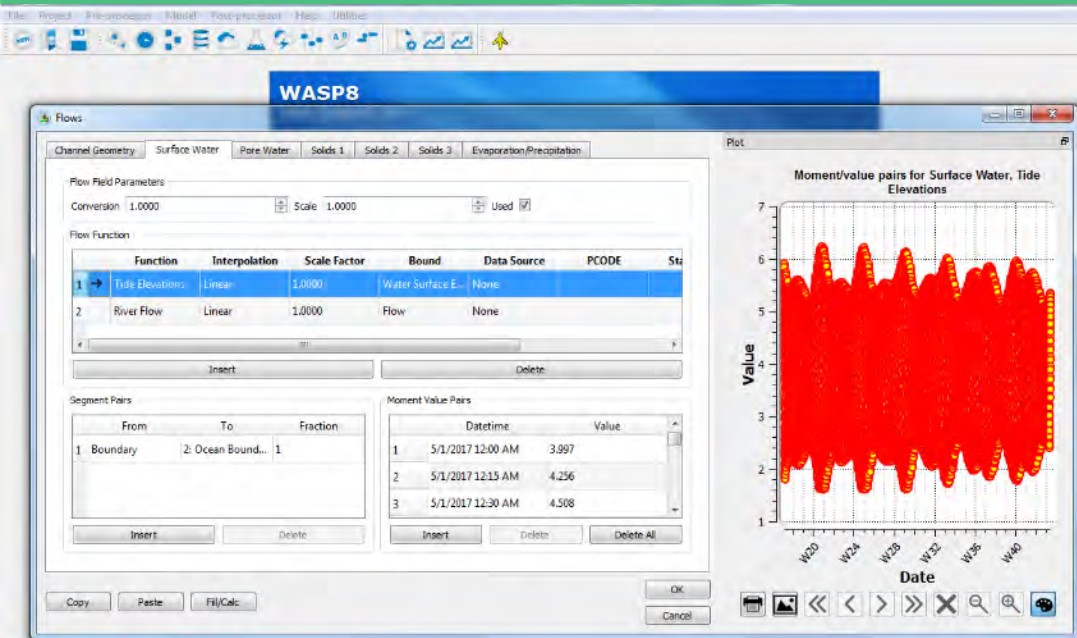
Invasive Aquatic Species



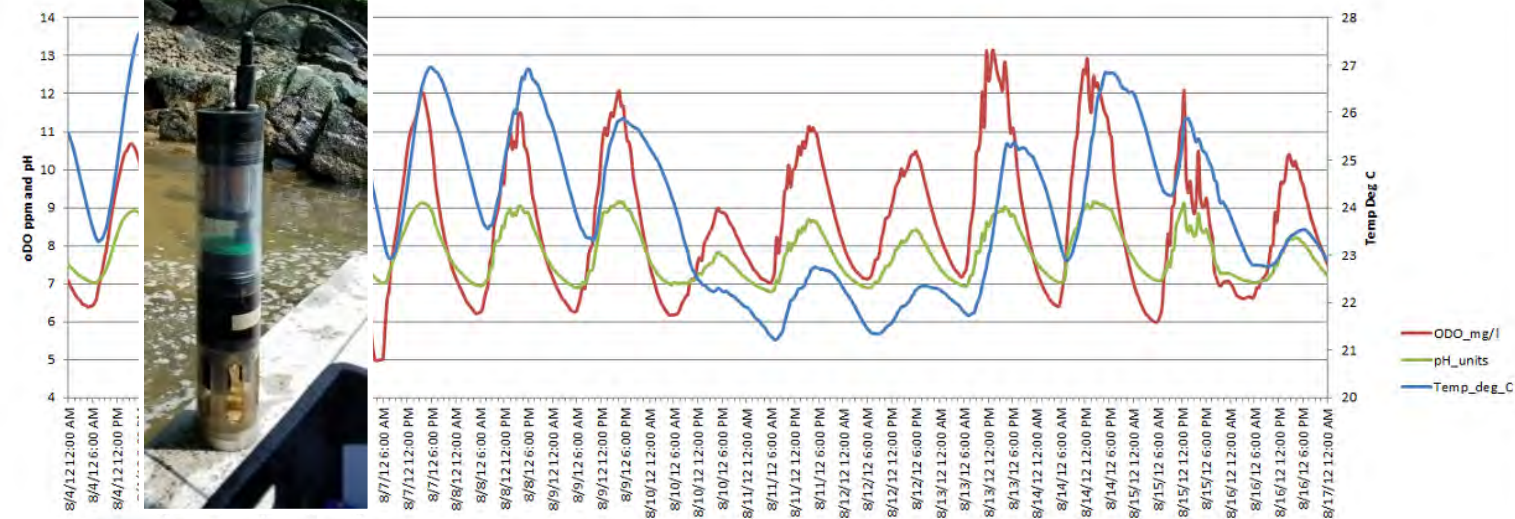


Specific Conductivity Variation North to South in Intermittent streams across Route 295 in Brunswick - 2016



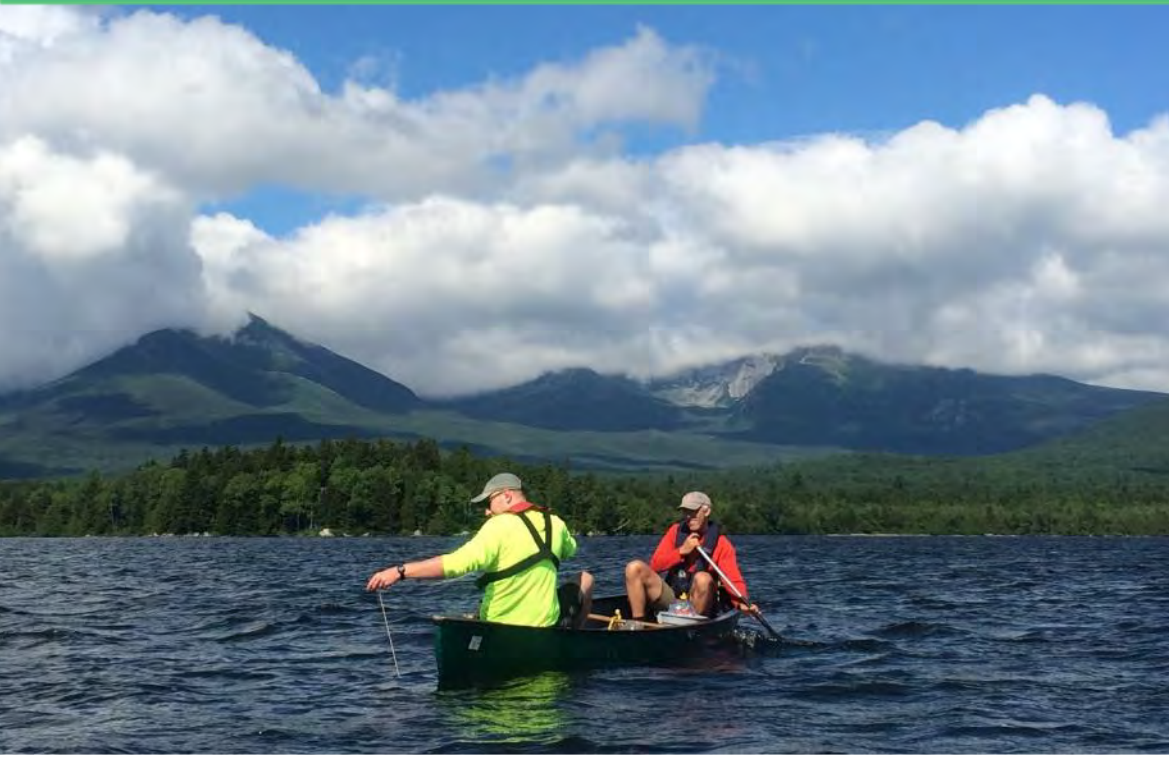


Aroostook River - Station AR3 Continuous DO, pH and Temperature





Lakes Assessment



Lakes Assessment



Marine



MAINE DEPARTMENT OF ENVIRONMENTAL PROTECTION

www.maine.gov/dep



Diving



Watershed Management



GOOSEFARE BROOK WATERSHED

May 2016



Before



After



PREPARED FOR:



City of Saco
300 Main Street
Saco, ME 04072

www.sacomaine.org



Town of Old Orchard Beach
1 Portland Avenue
OOB, ME 04064

www.oobmaine.com

PREPARED BY:



FB Environmental Associates
97A Exchange Street, Suite 305
Portland, ME 04101

www.fbenvironmental.com

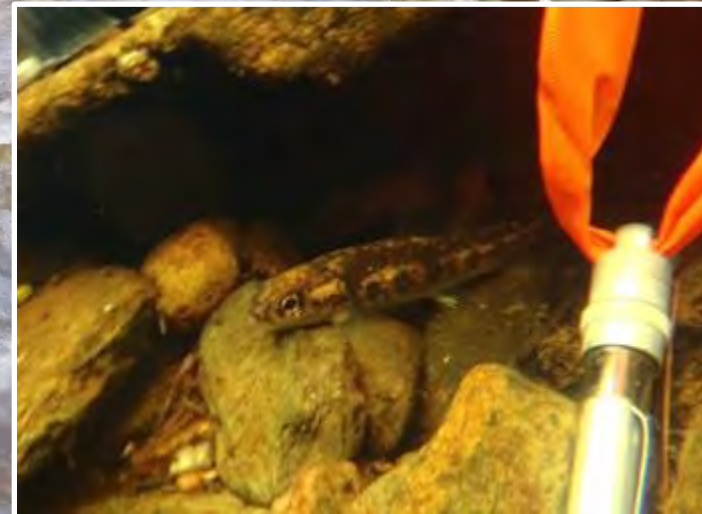
Water Quality Standards – Data and Maps



Salmon Habitat Monitoring Program



Poster
Reducing Acidification
10:30-11:30





Contact:

Emily Zimmermann

emily.zimmermann@maine.gov

207-446-1003

www.maine.gov/dep

