



# Wildlife Conservation Actions for a Changing Climate

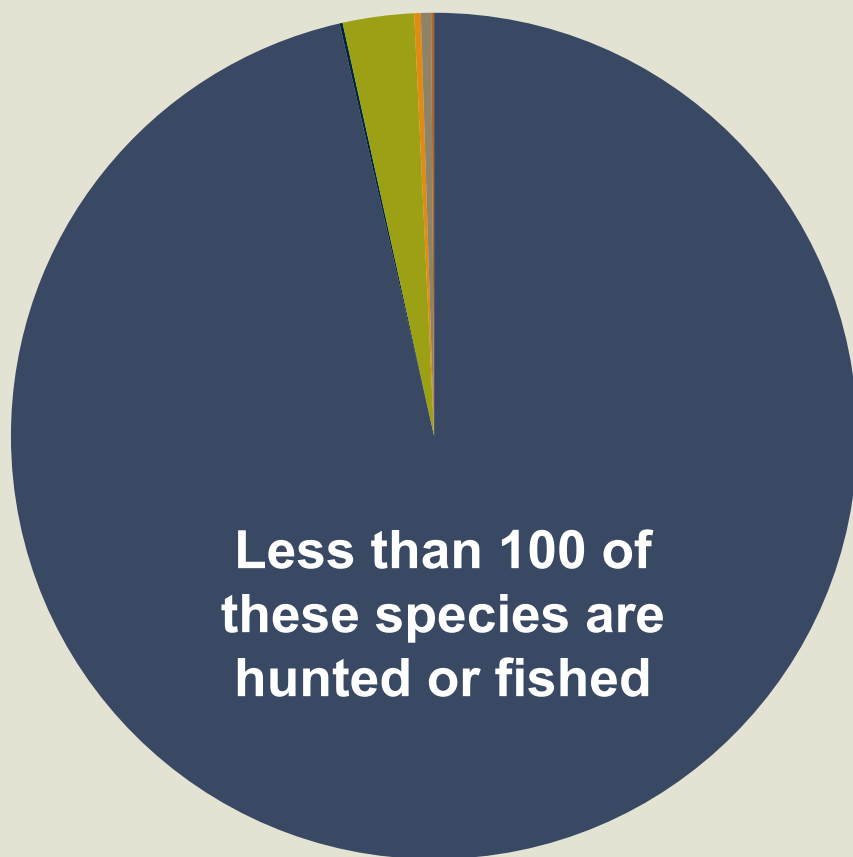
Maine Water Conference 2019  
Amanda Shearin, Habitat Outreach Coordinator  
Sgt. Tim Spahr, Maine Warden Service  
Maine Department of Inland Fisheries and Wildlife

# We Manage the Full Extent of Inland Species



*Through these doors  
pass the stewards of  
Maine's fish & wildlife*

# How Many 'Inland' Species Do We Manage?



■ Invertebrates (15,000)

■ Amphibians (18)

■ Birds (423)

■ Fish (39)

■ Mammals (61)

■ Reptiles (17)

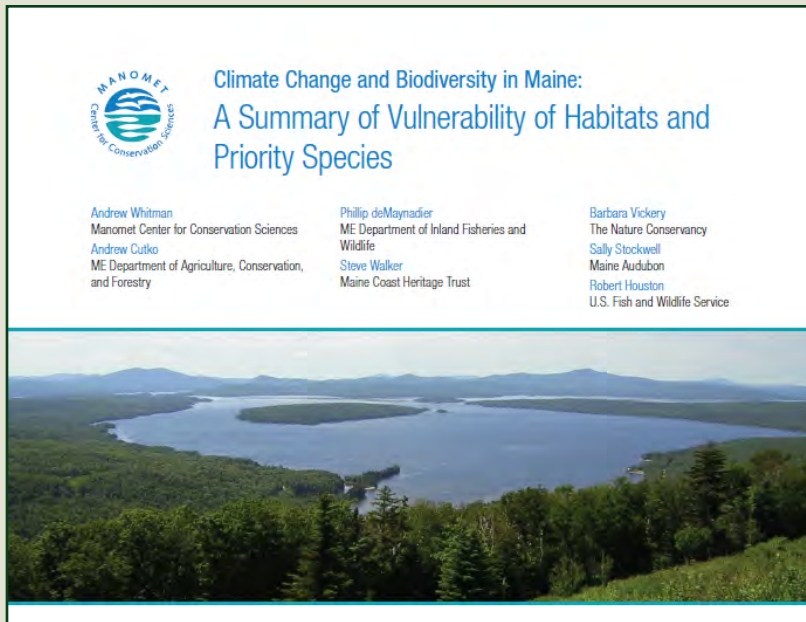
Less than 100 of these species are hunted or fished

# Maine's 2015–2025 Wildlife Action Plan



<http://www.maine.gov/ifw/wildlife/reports/MWAP2015.html>

# 2014 Vulnerability Assessment: Key Findings



- **Vulnerable habitats**
  - Montane forests, alpine, peatlands, coastal, coldwater
- **Vulnerable species**
  - 1 / 3 at-risk species highly vulnerable
- **Recommendations**
  - Conserve biodiverse habitats and connections among them
  - Consider climate vulnerability in species status assessments

# Revised Criteria for At-risk Species



Priority 1 Highest Priority ≥ 2 Criteria	Priority 2 High Priority ≥ 2 Criteria	Priority 3 Medium Priority ≥ 1 Criteria
Risk of extirpation	All other state or federal ESA spp.	Global vulnerability
Recent significant declines	Global vulnerability	State special concern
Regional Endemic	State special concern	Recent significant declines
High regional conservation priority	Regional endemic	Regional endemic
	High regional conservation priority	High regional conservation priority
	High climate change vulnerability	High climate change vulnerability
	Historical	Understudied rare taxa
		Historical
		Cultural conservation concern

# Action Plan: 378 At-Risk Species



**One-third affected by  
climate change**



# Key Stressors: Climate Change, Invasive Species, Roads, Fragmentation



The green crab, *Carcinus maenus*. Photo by Marney Pratt.





# Maine's Top Species Stressors



# Maine's Top Habitat Stressors



# Taking Action: Species



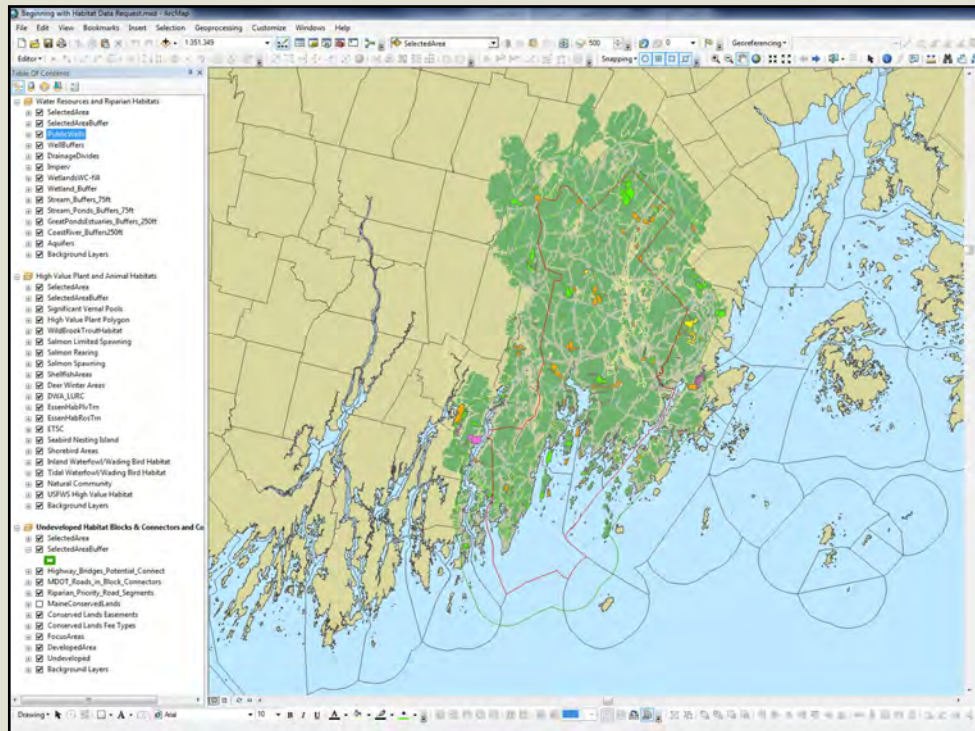
# Taking Action: Habitats



Wells Reserve



# Taking Action: Connectivity



# Connectivity in Action



2013-06-03 3:48:33 PM M 2/3

86°F



HC600 HYPERFIRE



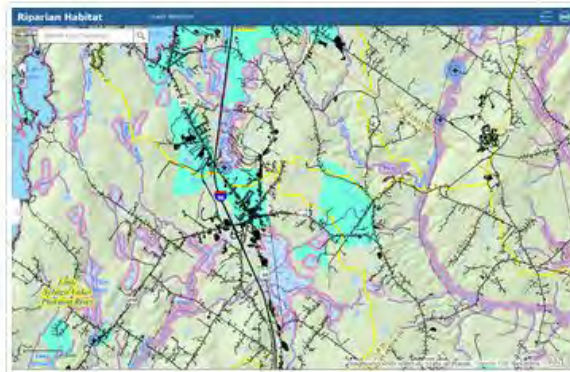
# Planning Assistance Tools



Beginning With Habitat

BwH Website

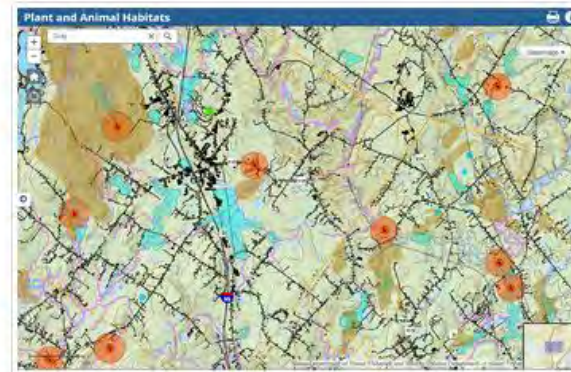
## Map Viewers



### Map 1- Riparian Habitats

Beginning with Habitat Map 1 depicts major surface water features and drainage areas, associated shoreline habitats and riparian zones, and aquifers and wells that supply public drinking water.

[Open Viewer](#)



### Map 2- Plant and Animal Habitats

Beginning with Habitat Map 2 depicts known rare, threatened, or endangered plant and animal occurrences, as well as "Significant Wildlife Habitat," "Essential Wildlife Habitat," and other important wildlife habitats.

[Open Viewer](#)

# A Greater Shared Awareness





# 2015 SWAP: 378 Species of Greatest Conservation Need (SGCN)

