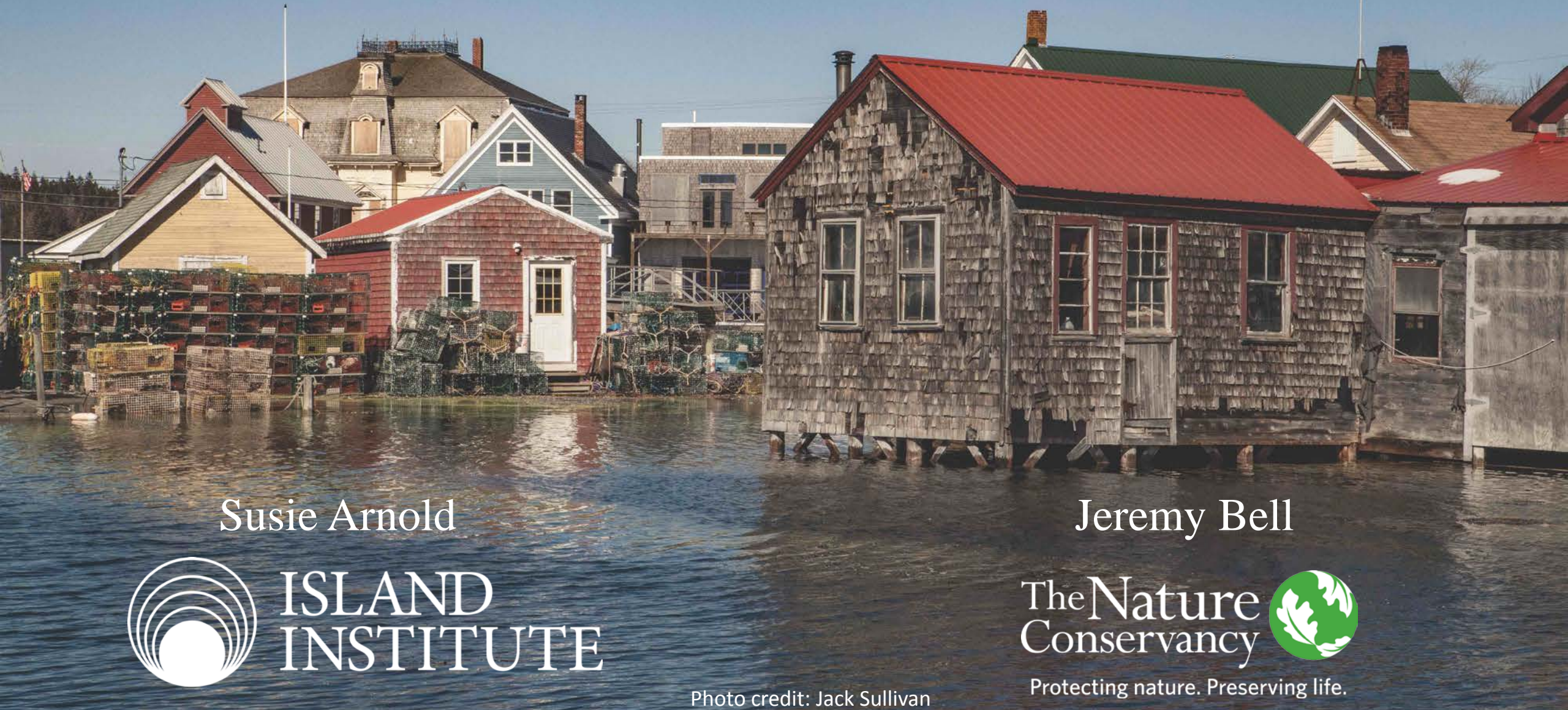


# *A Map, a Stick and a Cartoon: Alternative approaches to information sharing around the causes and impacts of sea level rise*



Susie Arnold



Jeremy Bell



Photo credit: Jack Sullivan





# SEA LEVEL RISE

**It's Happening!**





## Students study sea level rise in Barrington and Warren

Coastal impacts of climate change draws UPenn planning students to



Teresa Crean, a coastal community planner for Coastal Resources Center at the University of Rhode Island, shows how high sea level is expected to rise in the coming years. Ms. Crean worked closely with University of Pennsylvania students during their recent tour of Barrington and Warren.

PHOTOS BY RICHARD W. DIONNE JR.





# Monhegan





# Vinalhaven





# Coastal Risk Explorer

A web tool for assessing road flooding, lifelines, and social vulnerability in Maine

Photo © Nick Hall



**Bowdoin**

**BLUE SKY  
PLANNING**



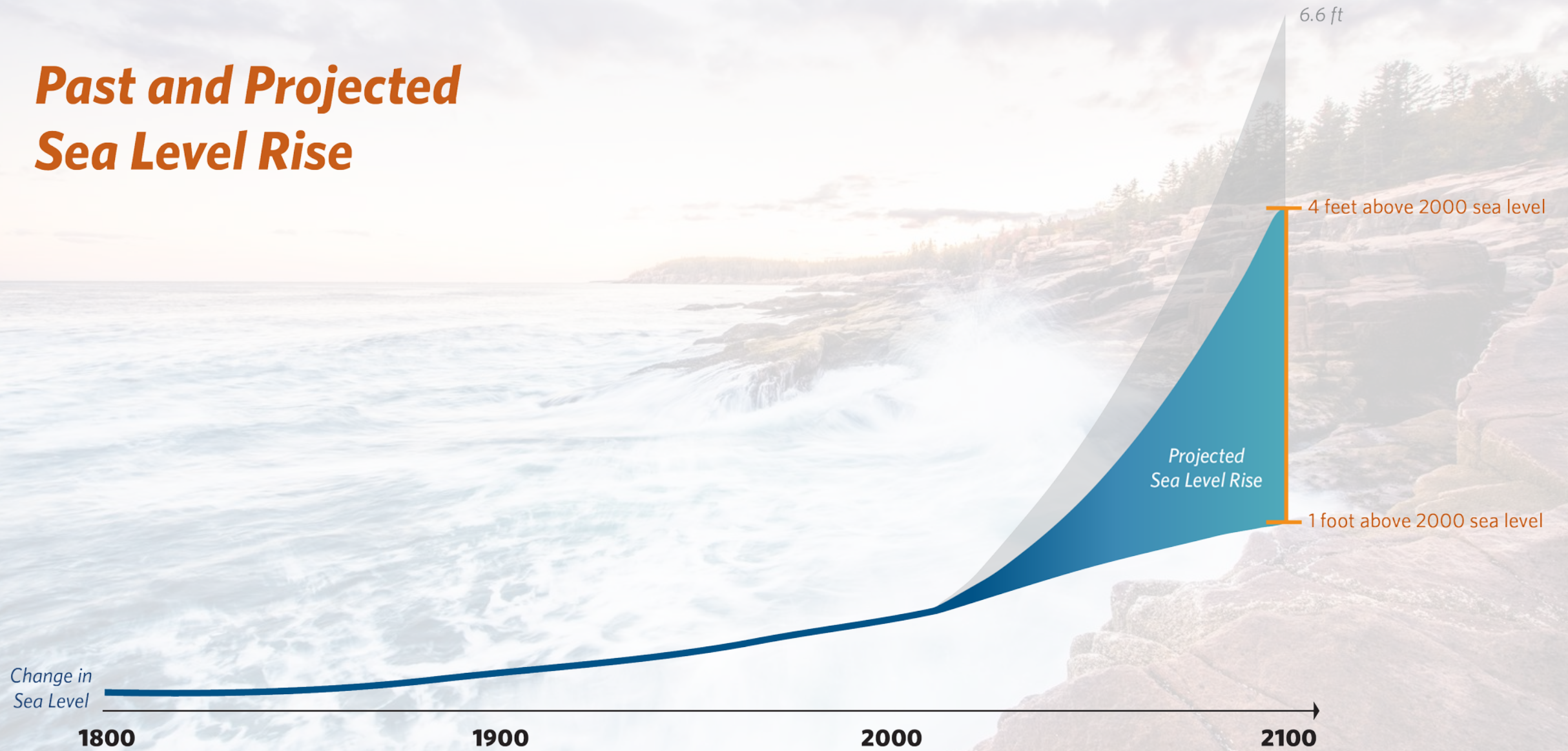




Photo © Mark Godfrey/TNC



# Past and Projected Sea Level Rise





## BDN ENVIRONMENT

### The next five years will shape sea-level rise for the next 300, study says



John Minchillo | AP

In this Oct. 29, 2012, file photo, seawater floods the entrance to the Brooklyn Battery Tunnel in New York in the wake of Superstorm Sandy. New research shows that for every five years in the present that we continue to put off strong action on climate change, the ocean could rise an additional eight inches by the year 2300.

By Chris Mooney, The Washington Post • February 20, 2018 2:57 pm  
Updated: February 21, 2018 6:17 am

## BDN BUSINESS

### Rising seas swallowed \$70 million in Maine home values, study says



CBS 13 | BDN

An astronomical high tide in Portland reached 13.1 feet, the 12th highest ever for the city, CBS 13 Chief Meteorologist Charlie Lopresti reported March 2, 2018.

By Lori Valigra, BDN Staff • January 22, 2019 6:24 am  
Updated: January 22, 2019 10:02 am



# *Transforming Ocean Management*





# *Transforming Ocean Management*





## Australia

Caribbean

Indonesia



Mexico and Central America



United States



100

## Communities

90

## Publications

25

### Restoration or Conservation

projects implemented using our decision support tools

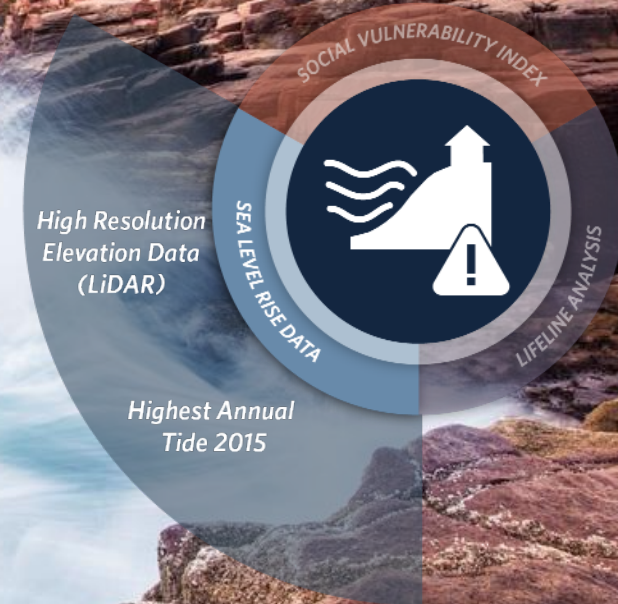


# *Data Driven Maine Specific*

## Sea Level Rise Prediction



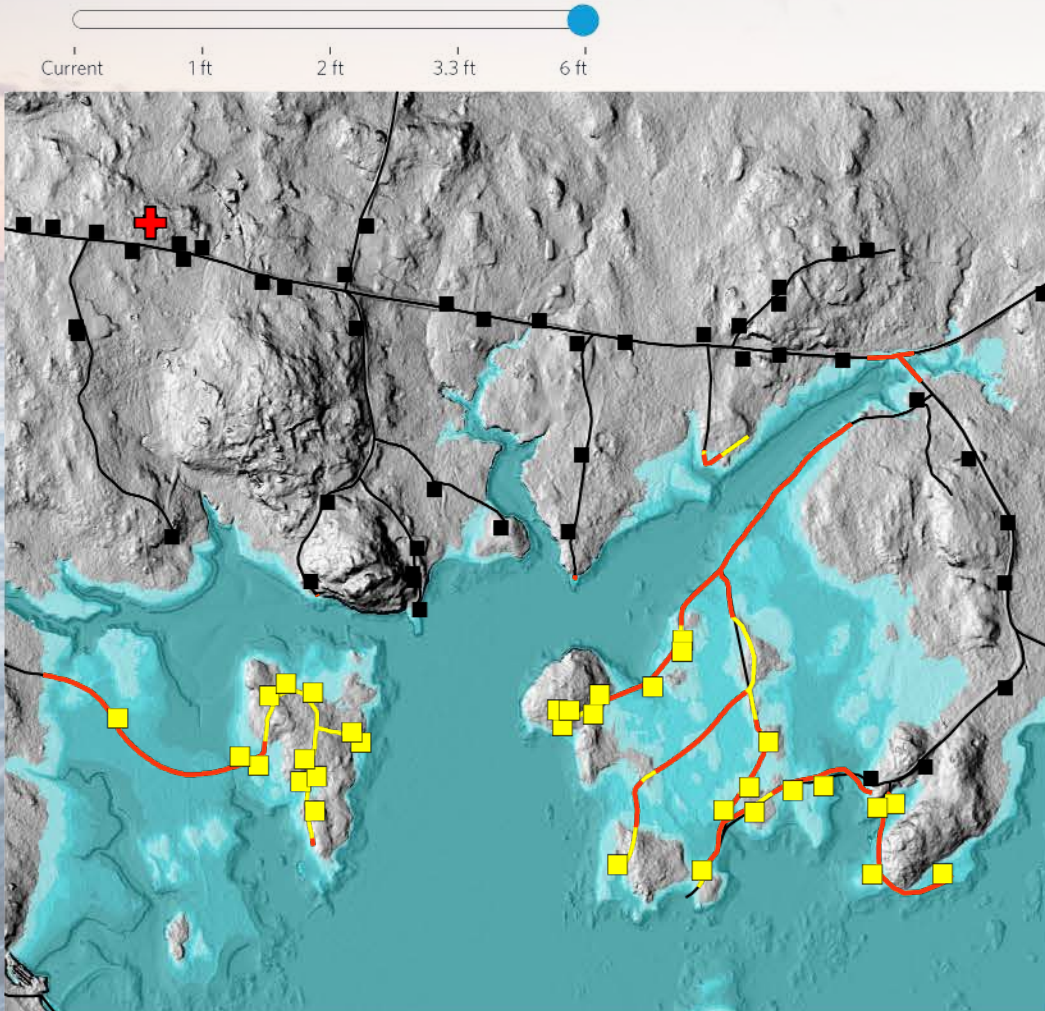
*View coastal areas under several sea level rise scenarios*





# Data Driven Maine Specific

## Sea Level Rise Prediction



View coastal areas under several sea level rise scenarios

Number of addresses inaccessible to emergency services

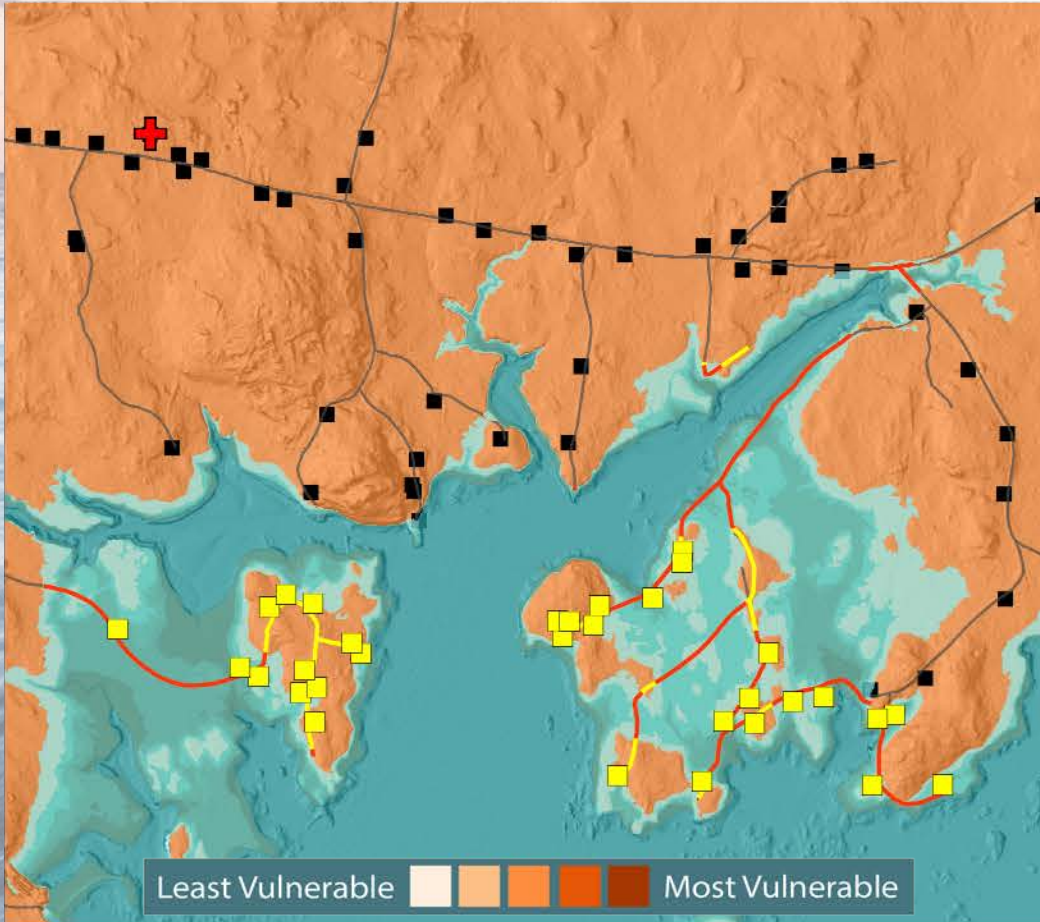
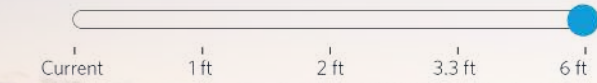
Approximate cost to update inundated roads





# Data Driven Maine Specific

## Sea Level Rise Prediction



View coastal areas under several sea level rise scenarios

Number of addresses inaccessible to emergency services

Approximate cost to update inundated roads

Overall social vulnerability of a town or block group

Measures included in the social vulnerability index:

- Socioeconomic status
- Household Composition & Disability
- Minority Status & Language
- Housing & Transportation







*Restore marshes and conserve  
future marsh migration areas*

*Upgrade road stream crossings  
to improve water flow*

*Maintain access  
to emergency services*