

BAGADUCE RIVER, LOWER PENOBSCOT WATERSHED

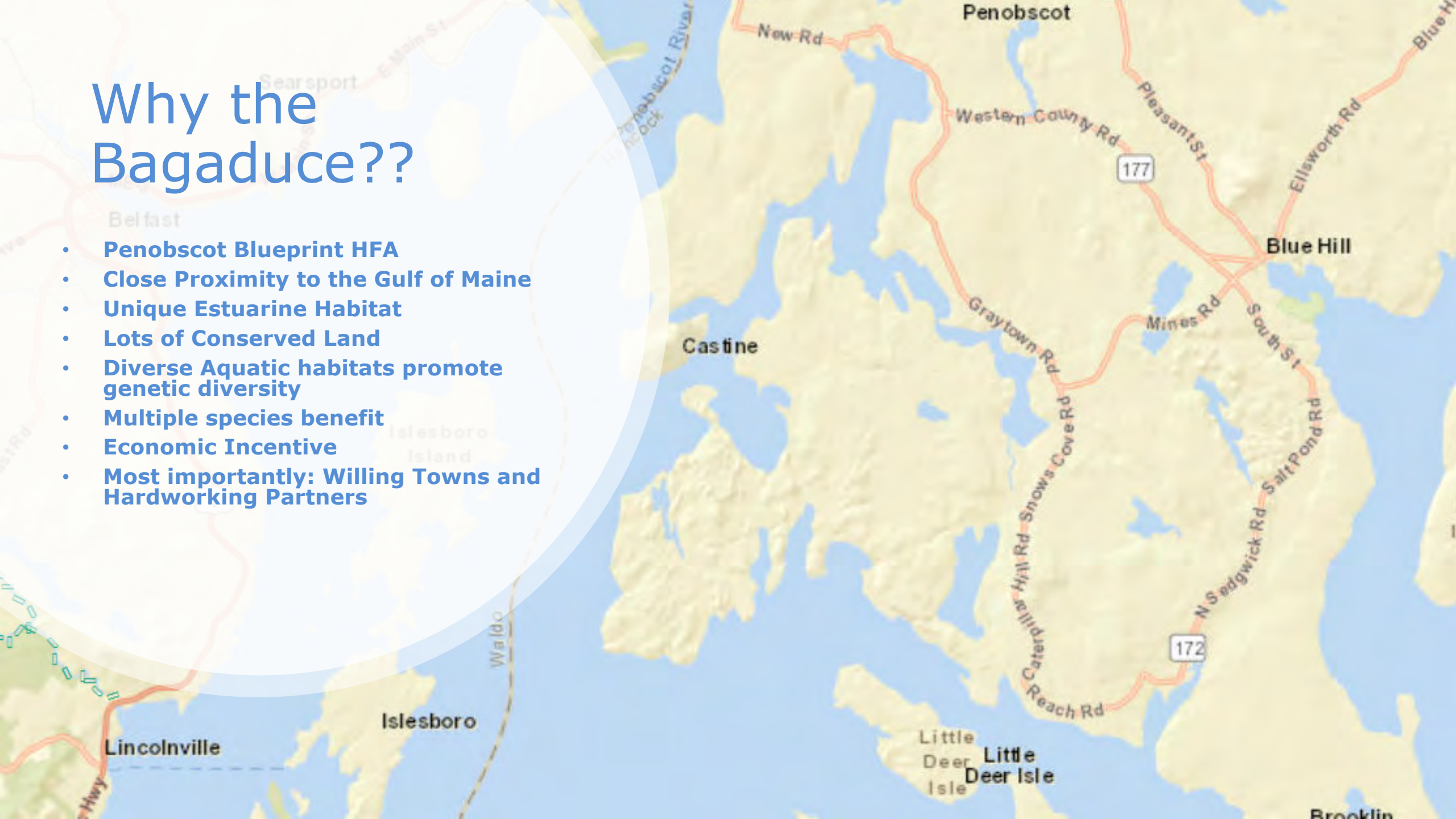
Two community-driven fish passage projects

Ben Matthews, The Nature Conservancy

Ciona Ulbrich, Maine Coast Heritage Trust

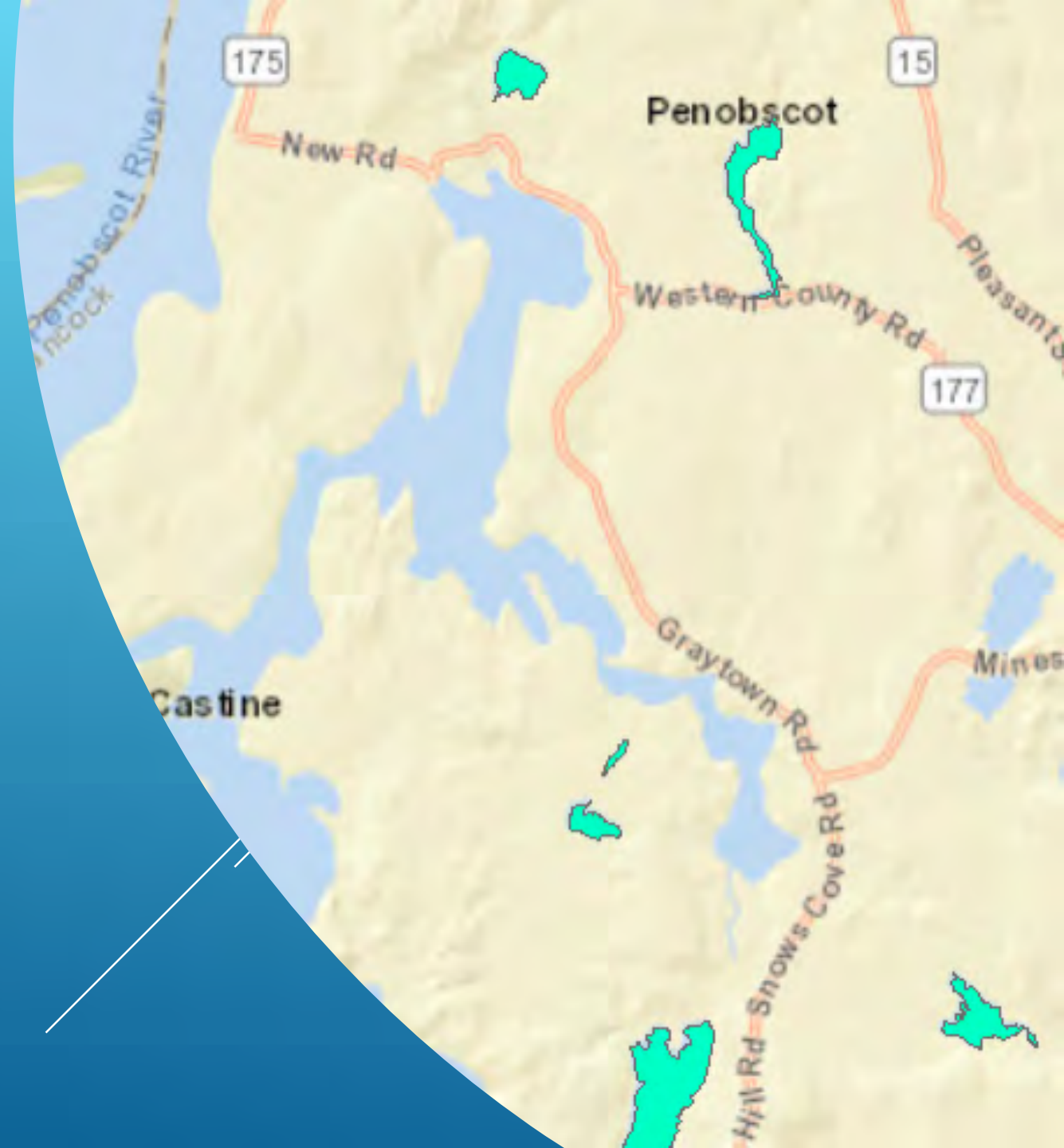
Why the Bagaduce??

- **Penobscot Blueprint HFA**
- **Close Proximity to the Gulf of Maine**
- **Unique Estuarine Habitat**
- **Lots of Conserved Land**
- **Diverse Aquatic habitats promote genetic diversity**
- **Multiple species benefit**
- **Economic Incentive**
- **Most importantly: Willing Towns and Hardworking Partners**



Alewife Ponds

Pond	Acreage	Alewife Potential
Wight Pond	192	45,120
Pierce Pond	110	25,850
Walker Pond	692	162,620
Frost Pond	155	36,425
Parker Pond	81	19,035
<u>TOTAL</u>	<u>1,230 Acres</u>	<u>289,050 Alewife/year</u>



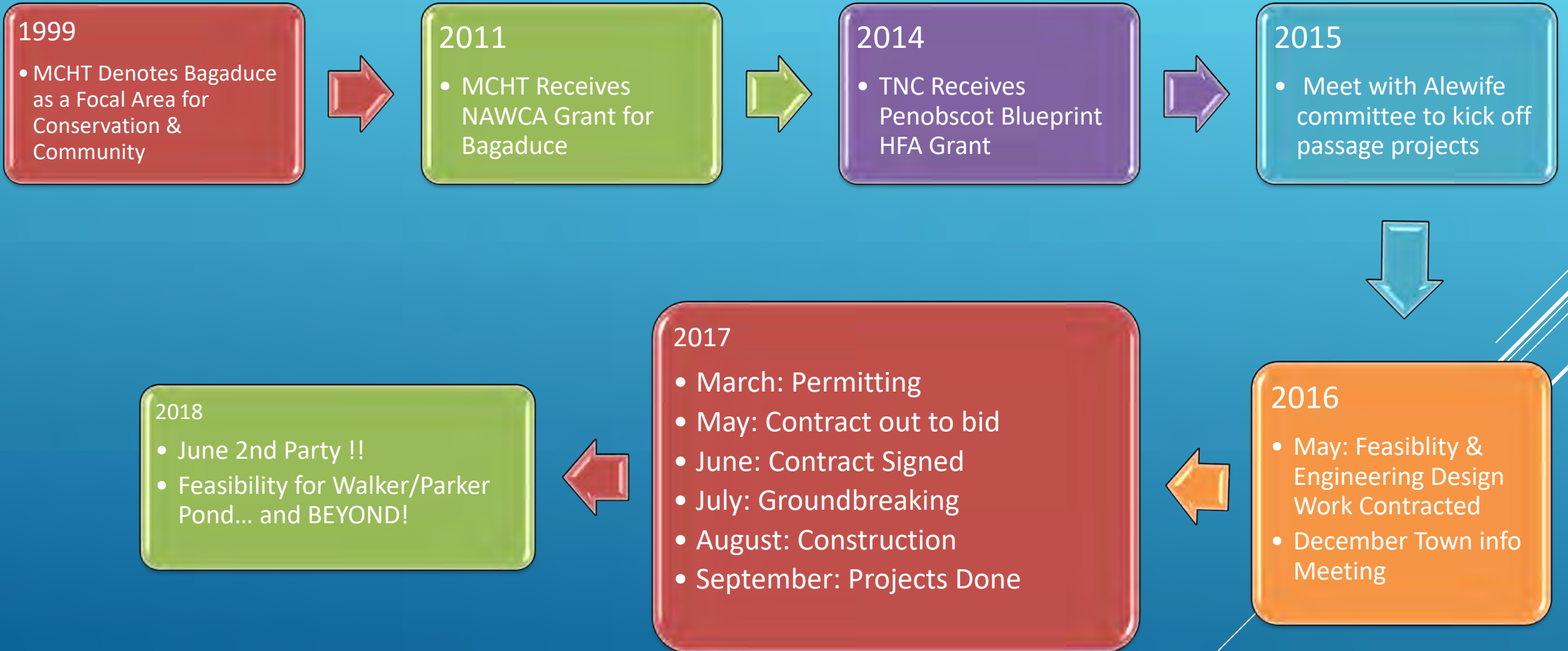


TWO FISHWAY
PROJECTS,
ONE SMALL
COASTAL
TOWN– How
does this
happen?

POP: 1263

MHI: 39,000

TIMELINE





WIGHTS POND:
Private Bridge,
Dam & Boat
Ramp



PIERCE POND –
MORE RECREATIONAL
USE, Town Owned Boat Ramp--
DIFFERENT HERITAGE.
HISTORY IS IMPORTANT TO
CONSIDER.



FIND CORE PEOPLE: BUILDING COMMUNITY
SUPPORT BEGINS WITH FINDING PEOPLE
WHO KNOW THE PLACE AND ALREADY
CARE ABOUT THE RESOURCE

Fun, food, and friends at
the Holly Berry Fair
See page 12



Castine Patriot

Vol. 26 No. 49 Castine, Maine 04421 The Community Newspaper of Castine and Penobscot December 4, 2016 \$1.40



In top photo, Audrey Puzosky, left, helps Zoe Dow decorate her Christmas cookie. Chloe Skellern, left, and brother Hollis will Santa what they want for Christmas.

Fish passage restoration under way

PENOBSCOT — The Town of England, was selected to design the plans. With funding from the National Oceanic and Atmospheric Administration's Penobscot River Habitat Blueprint program and The Nature Conservancy in Maine, engineering studies and proposed plans have been completed for both sites.

"Restoring habitat and former fish runs, in the most natural way possible, is a key goal of this program," notes Matthew Bernier of NOAA. "These two projects are a really nice fit with our goals, and we are keenly aware that it is hard to find funding for engineering studies."

"It's great when we have an opportunity to help a conservancy that really appreciates the importance of healthy streams and spawning fish," said Jeremy Bell of The Nature Conservancy. "We are really pleased to support this important step towards stream restoration in the town of Penobscot."

Ciona Ulbrich of Maine Coast Heritage Trust is the primary point person for both projects and adds, "These projects to restore fish passage and habitat build on years of voluntary land conservation work around this river's watershed."

The projects are now moving into the permitting stage, and construction is expected to take place in 2017. This public informational meeting will include a description of the projects and provide an opportunity for the public to ask questions. The primary engineer for the work as well as representatives from all the organizations involved will be attending the meeting.

Designing a way to restore fish passage with minimal impact on pond water levels involves the collection of a lot of data, and the expertise of engineers. After a competitive bidding process, Wright-Pierce of Topsham, a firm with experience in fishway projects around Maine and New

about alewife restoration

PENOBSCOT — The town Alewife Committee and the Maine Coast Heritage Trust will host a public informational meeting at the Penobscot Community School at 6 p.m. on Tuesday, Dec. 13, to talk about projects under way aimed at restoring spawning fish populations in two area streams.

For decades, historically important alewife runs at Mill Brook and Winslow Stream have been partially blocked. In recent years, a number of people in town have been actively collecting data and monitoring the runs. The eventually formed the Penobscot Alewife Committee — one of the first groups of its kind in this area.

Since this past summer, the committee has been working with Maine Coast Heritage Trust and the Blue Hill Heritage Trust to collaborate on the restoration of fish passage on these streams.

"These projects are a balancing act, said Bailey Bowden, chair of the Penobscot Alewife Committee. "It is important to not only restore fish passage, but also to maintain the current water levels in both ponds for our wildlife, residents, and recreational users, as well as minimize ongoing maintenance costs. We are excited to be working on projects that should achieve all of those goals."

Designing a way to restore fish passage with minimal impact on pond water levels involves the collection of lots of data, and the expertise of engineers. After a competitive bidding process, Wright-Pierce of Topsham, Maine, a firm with experience in fishway projects around Maine and New England, was selected to design the fish passage plans.

With funding from the National Oceanic and Atmospheric Administration's Penobscot River Habitat Blue-

Conservancy in Maine, engineering studies and proposed plans have already been completed for both sites.

"Restoring habitat and former fish runs, in the most natural way possible, is a key goal of this program," said Matthew Bernier of NOAA. "These two projects are a really nice fit with our goals, and we are keenly aware that it is hard to find funding for engineering studies."

"It's great when we have an opportunity to help a community that really appreciates the importance of healthy streams and spawning fish," said Jeremy Bell of The Nature Conservancy. "We are really pleased to support this important step towards stream restoration in the town of Penobscot."

Ciona Ulbrich of Maine Coast Heritage Trust is the primary point person for both projects and added, "These projects to restore fish passage and habitat build on years of voluntary land conservation work around this river's watershed."

The projects are now moving into the permitting stage, and construction is expected to take place in 2017. This public informational meeting will include a description of the projects and provide an opportunity for the public to ask questions. The primary engineer for the work and representatives from all the organizations involved will be attending the meeting.

The Town of Penobscot Alewife Committee was formally created in 2015, is all volunteer, and has been working with the town government on all issues tied to alewives in and around the Bagaduce River. It is one of the first such local committees in this area of the state, and works to also communicate about these issues with a wide range of entities at a regional

GO PUBLIC AS SOON AS YOU CAN.
IT'S IMPORTANT TO MANAGE EXPECTATIONS.

Greetings,

The Town of Penobscot Alewife Committee and Maine Coast Heritage Trust are pleased to announce there will be a public informational meeting to discuss options that will improve fish passage at Pierce's and Wight's Ponds.

The meeting will be held at the Penobscot Community School gymnasium at 6PM on December 13, 2016.

Town records indicate that you own property that may border these ponds and we want to personally invite you to this meeting.

The Town was extremely fortunate to receive a grant from the National Oceanic and Atmospheric Administration (NOAA) and the Nature Conservancy (TNC) that fully funded a professional engineering study that included design plans for both ponds. The project engineer will be at the meeting to explain the designs and answer questions.

Besides restoring passage for fish, a primary aim is to keep the water level at existing levels for our wildlife, land owners and pond users. If everything falls into place, construction would occur during the summer of 2017. Access to the pond boat landings may be limited during construction.

Enclosed is the official press release that contains more information.

We hope to see you at the meeting but if you are unable to attend and have questions, please feel free to contact Bailey Bowden or Ciona Ulbrich.

Bailey Bowden
Chair
Penobscot Alewife Committee
326 - 8524

Ciona Ulbrich
Senior Project Manager
Maine Coast Heritage Trust
801 - 4058

THINK AHEAD: PRESS
STRATEGY, OUTREACH,
PUBLIC MEETINGS,
PHOTOGRAPHY.
THINGS THAT CAN SEEM
TRIVIAL DO MATTER.

Feasibility, Engineering &
Design
\$60,000

Wight & Pierce Fishway
Construction:
\$240,000

\$\$ Costs \$\$

Outreach infrastructure
improvements:
\$30,000

Total:
\$330,000
from 9 grants and
multiple private donors



FUNDRAISING STRATEGY: PLAN, USE GOALS AND BE AWARE OF PARAMETERS



HERITAGE IS IMPORTANT TO
RESEARCH AND RESPECT



Wight And Pierce Ponds



Turtle Pond

Wight Pond

Winslow Stream

South Penobscot







POOLS AND WEIRS,
EXPOSED: WIGHTS
POND WITH
CONSTRUCTION
COMPLETE BUT STILL
BYPASSING WATER
AROUND IT



ENTIRE SITE WITH
BOAT RAMP,
PARKING AND
FINISHING
TOUCHES



WIGHTS
POND,
NEARLY
COMPLETE

WIGHTS POND FISHWAY WITH HIGHER WATER – WEIRS ARE NEARLY INVISIBLE







PIERCE POND: ROOM FOR
IMPROVEMENT.
SMALL PARKING AREA, OLD
BOAT RAMP, JUST WOODS







Pierce's Pond: part of the Bagaduce River Watershed

Pierce's Pond may seem isolated, but it sits within a larger land- and sea-scape, a watershed. The pond collects rain and snowmelt from the surrounding hills and wetlands, and the outlet stream (Mill Creek) flows into the tidal waters of the Bagaduce River, Penobscot Bay, and beyond.

In a healthy watershed, that supports fish and other wildlife as well as people, these connections are free and open, all the parts intact. The Bagaduce River Watershed is home to hundreds of species of birds, other animals, and plants, and is one of the most productive estuaries in Maine.

Take a closer look at the trees and plants, the birds and insects, the water. What do you see? What do you know now that you didn't before?

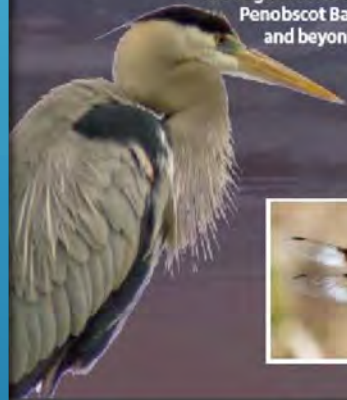


Image: Blue Heron, author: Alexander Langworthy, © iStockphoto by Nicki Christian; background image by Alex Shilling

Water gives life to people and towns



Mills on nearby Wight's Pond.

The name of Pierce's Pond outlet, Mill Creek, reveals a human past. This place is home to Wabanaki people, who for thousands of years took fish and other food and inspiration from Majabigwaduce, place of big tides and rough currents.

For European colonists, the creek provided power to several mills. Their saws cut trees into lumber, barrel staves, and shingles. Turning stones ground grain into flour.

The mills helped local families and towns grow and prosper in the 18th and 19th centuries. The mill dams, however, prevented fish from migrating and cut the connections between people, pond, stream, river, and bay. Today, communities are restoring waterways, connecting streams for fish like alewives. A new fishway opened at Mill Creek in 2017.



Mill Creek passes through a restored "ironstone culvert" built beneath the road to Pierce's Pond.

Covered by Frank G. Spink; mill at Wight's Pond courtesy of Penobscot Historical Society; culvert by C. Roberts; background image by C. Roberts

EDUCATIONAL SIGNAGE AT PIERCE POND



AGAIN, BE
PUBLIC.
LEGISLATOR
SUPPORT CAN
HELP

FISHERMEN'S VOICE

News and Comment for and by the Fishermen of Maine

Home About Us Subscribe Advertise Archives Contact Classified Ads

Alewife Restoration Project, Part II

by Sandra Dinsmore

The removal of a dam at Wight's Pond and re-opening fish passages for alewives at Wight's and Pierce's ponds in Penobscot took an incredible amount of time for those involved and a surprising amount of money. (The alewife, *Alosa pseudoharengas*, is an anadromous species of herring that spends most of its life at sea, but returns to fresh water to spawn. It is a traditional spring source of lobster bait.) Both Pierce's and Wight's pond fishways were completed by September 30. It was a complicated process.



Pierce Pond, Penobscot, Maine. Engineered anadromous fish passage to Pierce Pond. Many of the thousands of ancient routes for alewives and other anadromous fish in Maine have been blocked by human activity in the form of dams, roads, unmaintained culverts and debris. The fish that annually swim up into estuaries, streams and lakes to spawn produce the trillions of young fish that return to the Gulf of Maine. They become the base of the food chain for life in the Gulf of Maine. Ken Woisard photo

"The Nature Conservancy and NOAA (the National Oceanic and Atmospheric Administration) funded much of the whole fishways project, but it wasn't simple," said Clona Ulbrich, Senior Project Manager for the Topsham-based Maine Coast Heritage Trust (MCHT). Ulbrich, who lives in Blue Hill, represents both the MCHT both on this project and on a recently formed Three Town (Brooksville, Penobscot, and Sedgwick) Alewife Committee. She spent the last two and a half years writing grants, negotiating contracts, working with boards of selectmen, fundraising, and attending many meetings in order to bring fish passage back to Wight's and Pierce's ponds.

CONTENTS

- It's Complicated
- The Mysterious Case of the *Mary Celeste*
- Editorial – Empowering All Clean Water Requirements "Burdensome"
- Tuna Lab Leaving Gloucester
- Nicholas Walsh – "We Trusted Her!"
- New England Council Unanimously Reelects Dr. John Quinn as Chair and Terry Stokwell as Vice Chair
- Technology Brings Fish Hold into 21st Century
- US Army Corps of Engineers, York Harbor, FNP Dredging, York Maine
- NOAA Fisheries Announces Common Pool Area Closure and Possession Prohibition for Georges Bank Cod
- Council to Consider Implications of Refuel Sentence
- Problems Follow Conviction – Judge Seizes Four Vessels and 54 Permits From Codfather in Latest Fraud

EFFECTIVE MEDIA IMPORTANT: COMBINATION OF EARNED AND RELEASES

1/2/2018

Penobscot makes 2017 a banner year for alewives - The Ellsworth American/The Ellsworth American



An aerial photo of Pierce's Pond taken this past summer. KEN WOISARD PHOTO

(Printed from url=<https://www.ellsworthamerican.com/maine-news/waterfront/penobscot-makes-2017-banner-year-alewives/>)

Penobscot makes 2017 a banner year for alewives

December 31, 2017 by Stephen Rappoport on Environment, News, Waterfront

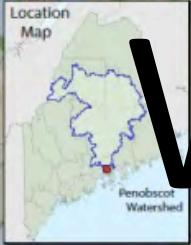


PENOBSCOT — Snow and ice may choke the streams flowing from Wight's Pond and Pierce's Pond at the start of the new year, but the coming of spring will return flowage from the ponds and, thanks to a pair of projects this past fall, both ponds will be available as spawning grounds for alewives.

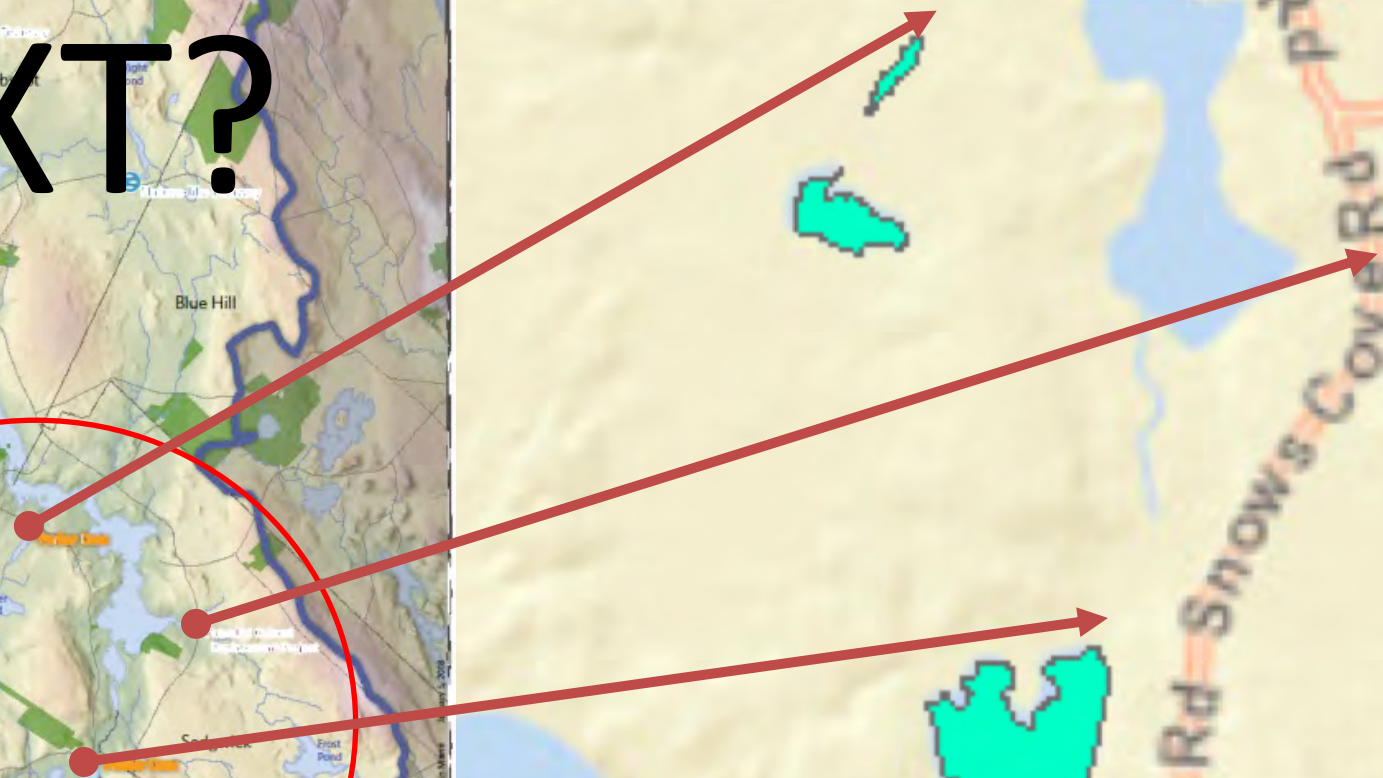
Thanks to a collaboration between the citizens of Penobscot, federal and state agencies and several local and national conservation organizations, crews from R.F. Jordan & Sons Construction Inc. of Ellsworth began working late last summer to remove a decades-old dam and install a "nature-like fishway" at the outlet of each of the two ponds. The goal was to reopen both streams for fish passage.

<https://www.ellsworthamerican.com/maine-news/waterfront/penobscot-makes-2017-banner-year-alewives/>

The Bagaduce River Watershed



Whats NEXT?



Conserved Land



Many helping hands make a difference

Restoration projects at Pierce's Pond and nearby Wights Ponds were completed thanks to vital financial support from many individuals and organizations:

City of Penobscot Alewife
Committee, Select Board, and

The Natural Resources Trustees for the
State of Maine

Department of Oceanic and Atmospheric
Administration (NOAA)

Maine Outdoor Heritage Fund

Wildlife Conservancy

Blue Hill Heritage Trust

Historic Sites and Landmarks Trust

Maine Sea Grant

Gracie and Sons Construction, Inc.

Bill Hutchins

Pierce

Ed Gracie Logging

Trustee's Fund

Janice McKay

and many other
private donors

As well as the understanding and
patience of many neighbors and
waterfront land owners.

Thank you

PUBLIC
CELEBRATION EVENT
JUNE 2, WATERSHED
WIDE VISION, 3-
TOWN COMMITTEE.
MORE TO COME!