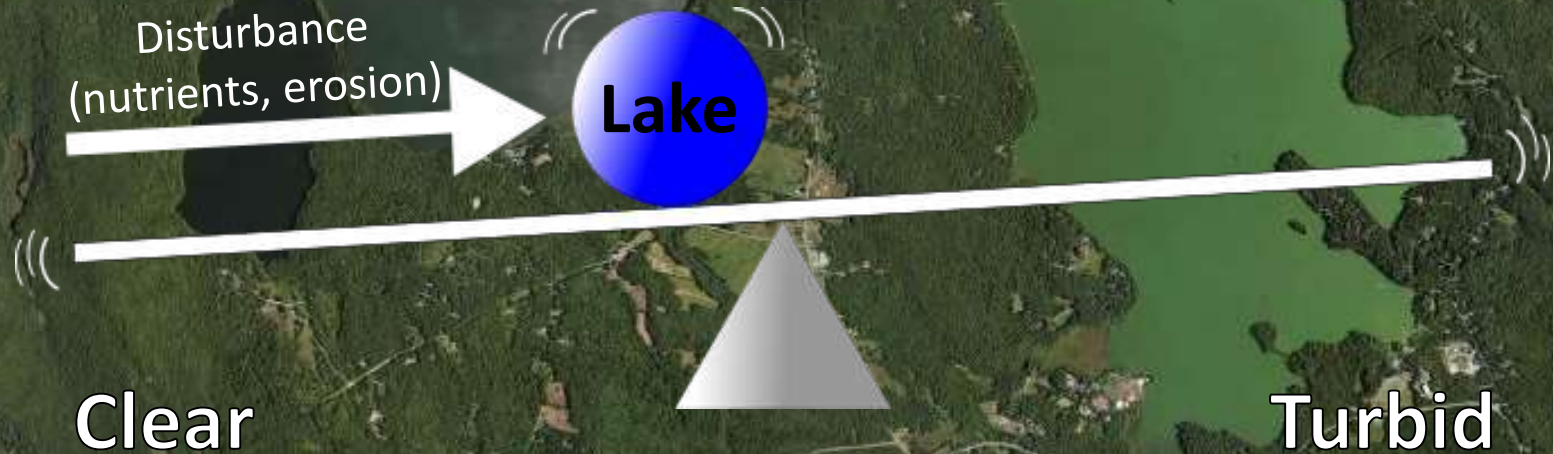
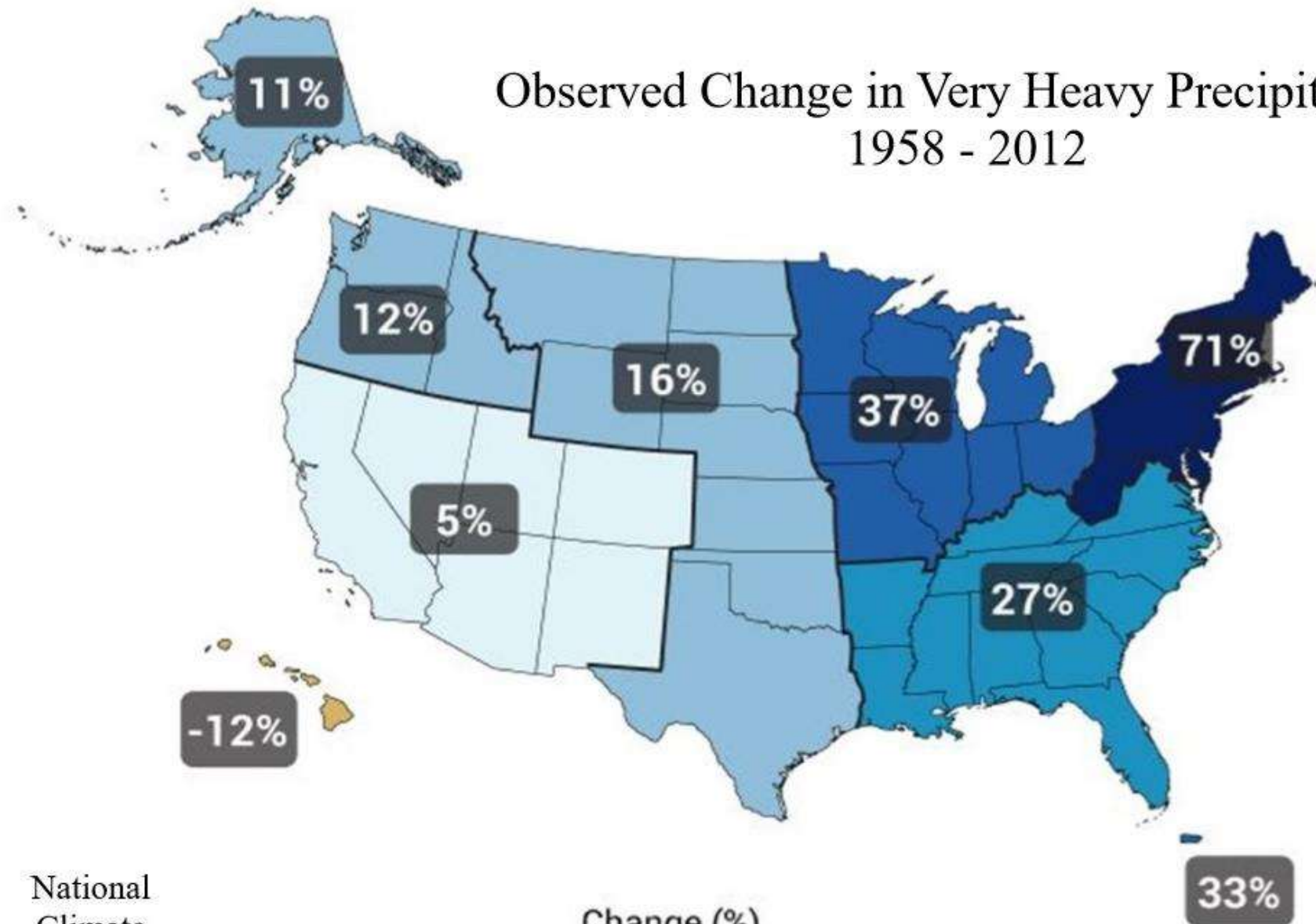


A Partnership Approach to Understanding and Addressing Lake Tipping Points



Observed Change in Very Heavy Precipitation 1958 - 2012



National
Climate
Assessment

Change (%)



<0



0-9



10-19



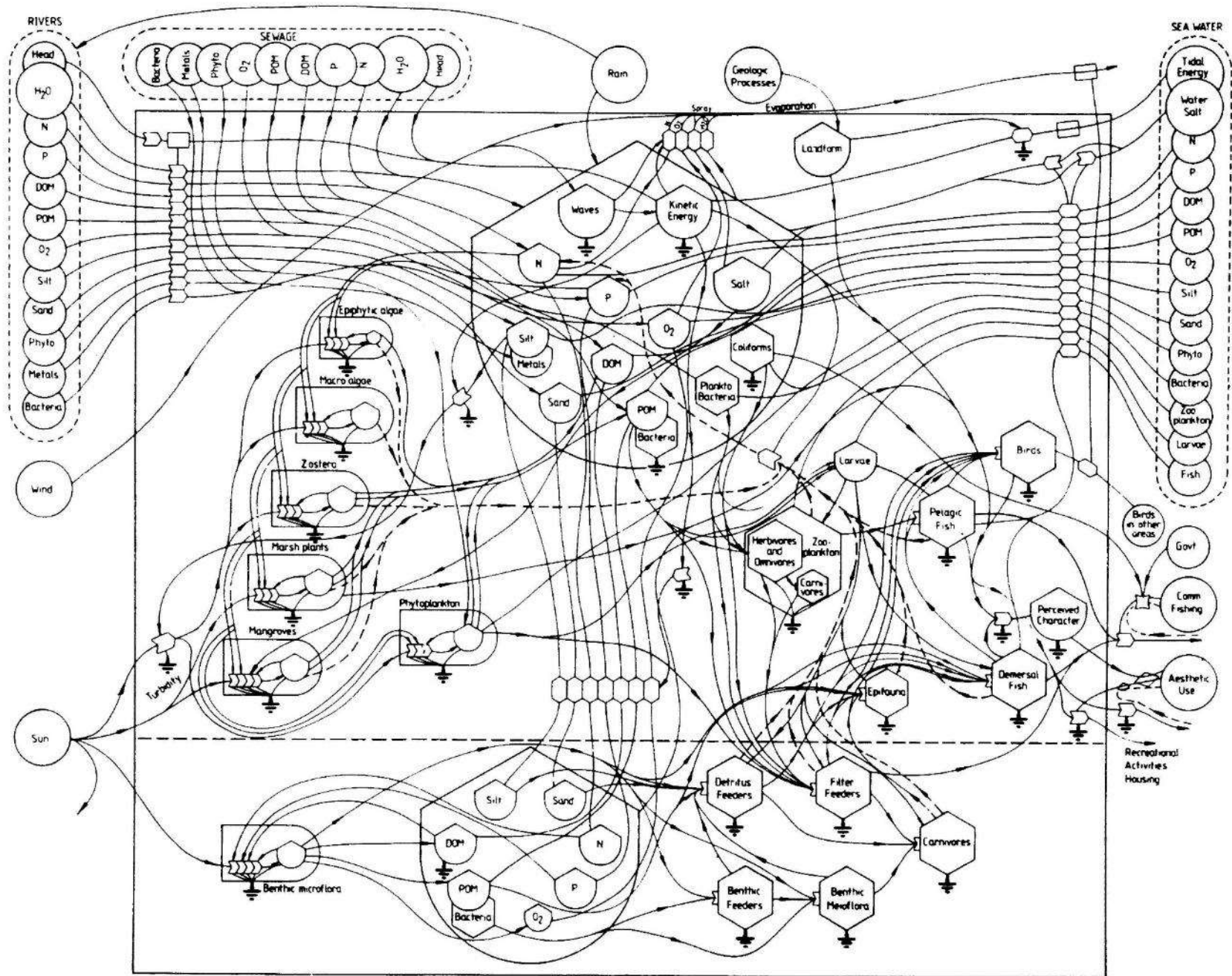
20-29



30-39



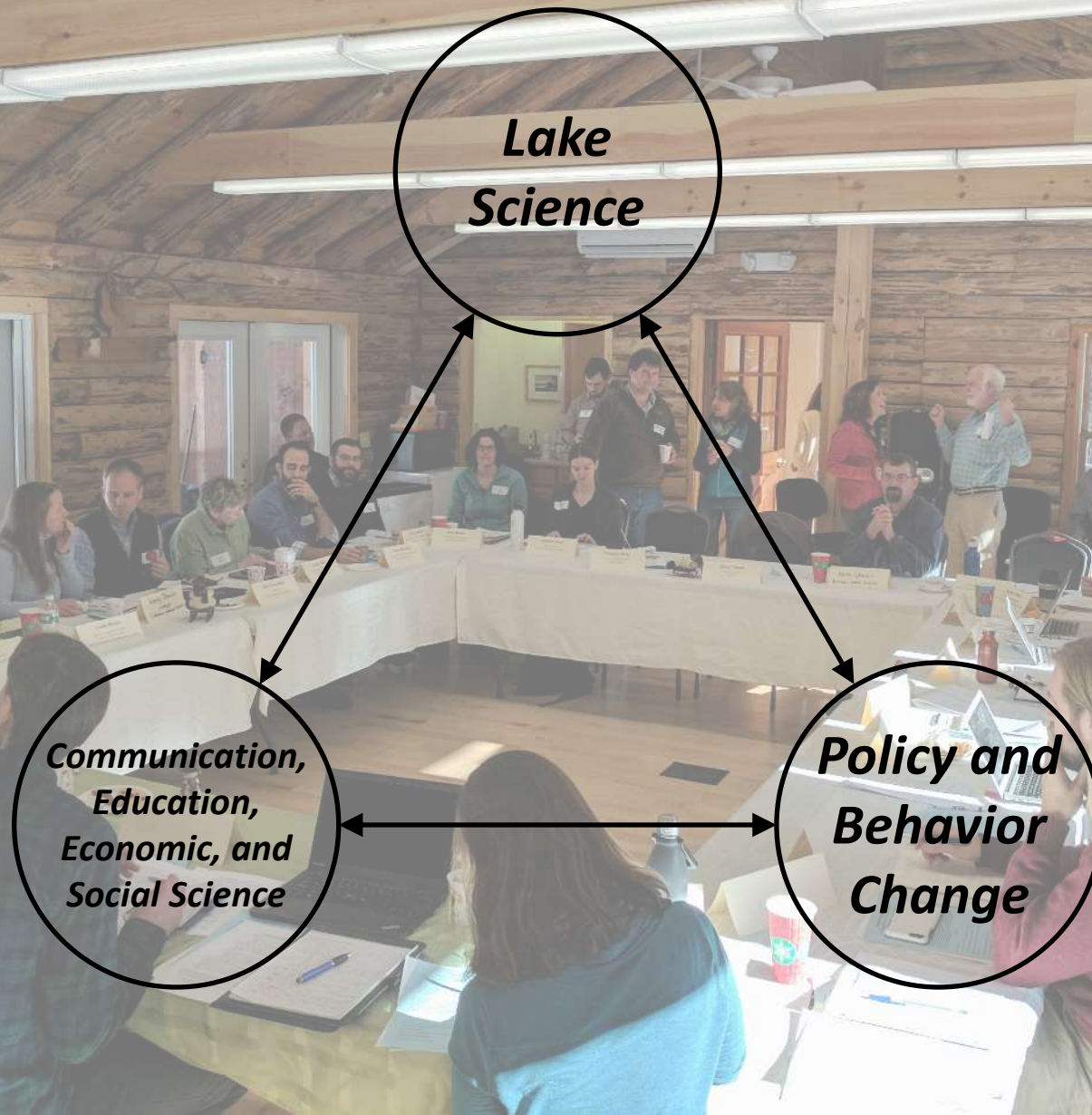
40+



(Nixon 1992)



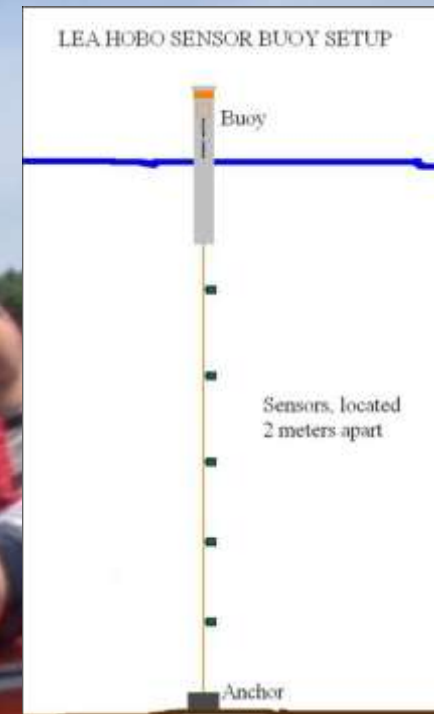
Maine Lakes Collaborative





Lakes Environmental Association Maine Lake Science Center

In situ temperature profiles (HOBO sensors)

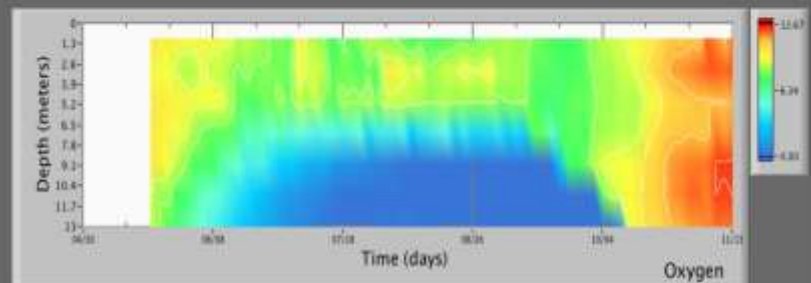
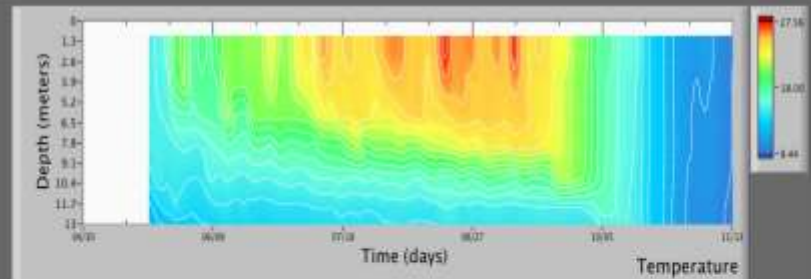


Buoy marking the temperature sensors



A HOBO temperature pendant data logger

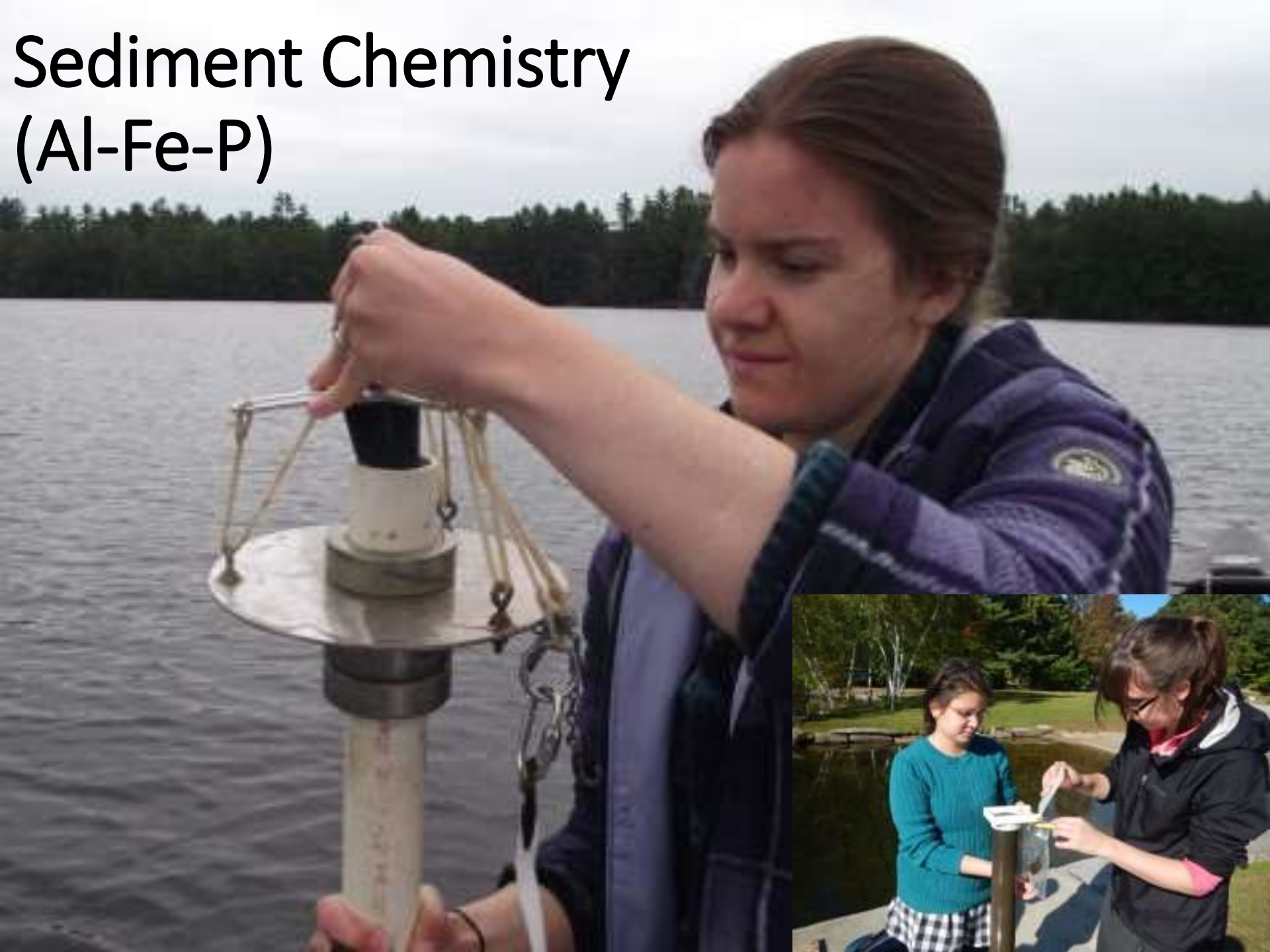
GLEON Buoy



Gloeotrichia echinulata



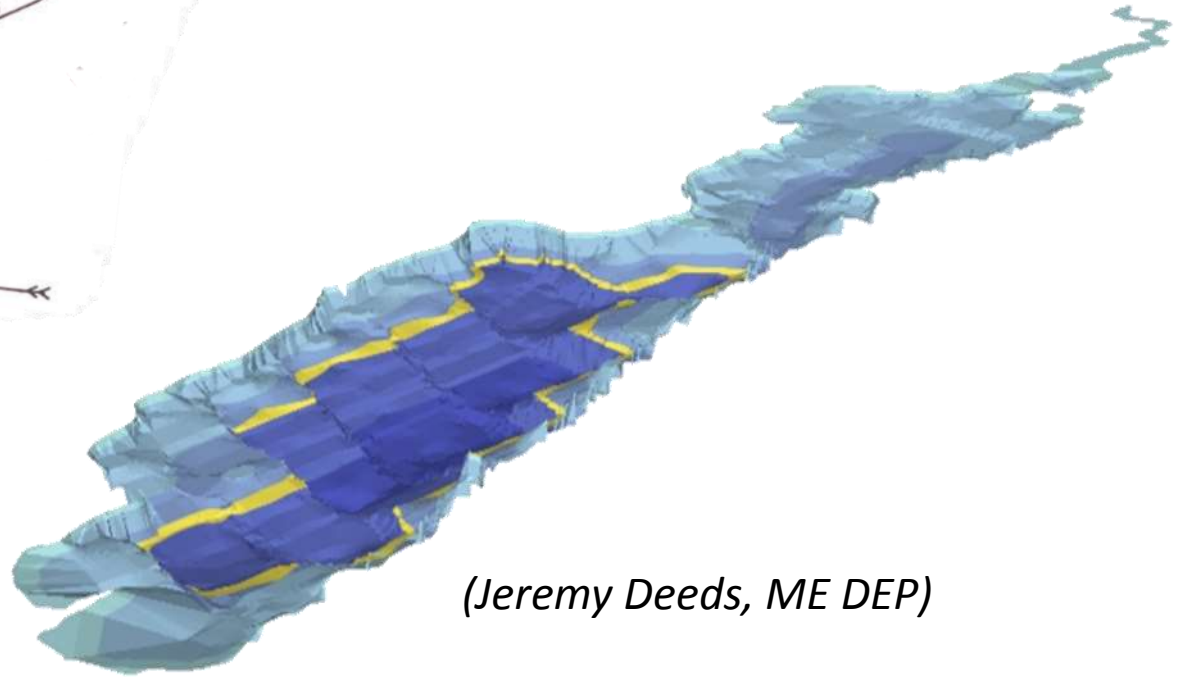
Sediment Chemistry (Al-Fe-P)



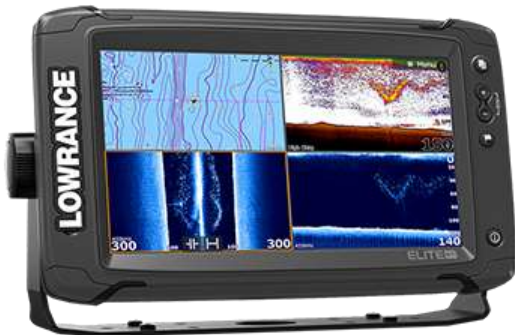
High Resolution Depth Data

Highland Lake

(1957; ME-Inland Fish and Wildlife)



(Jeremy Deeds, ME DEP)

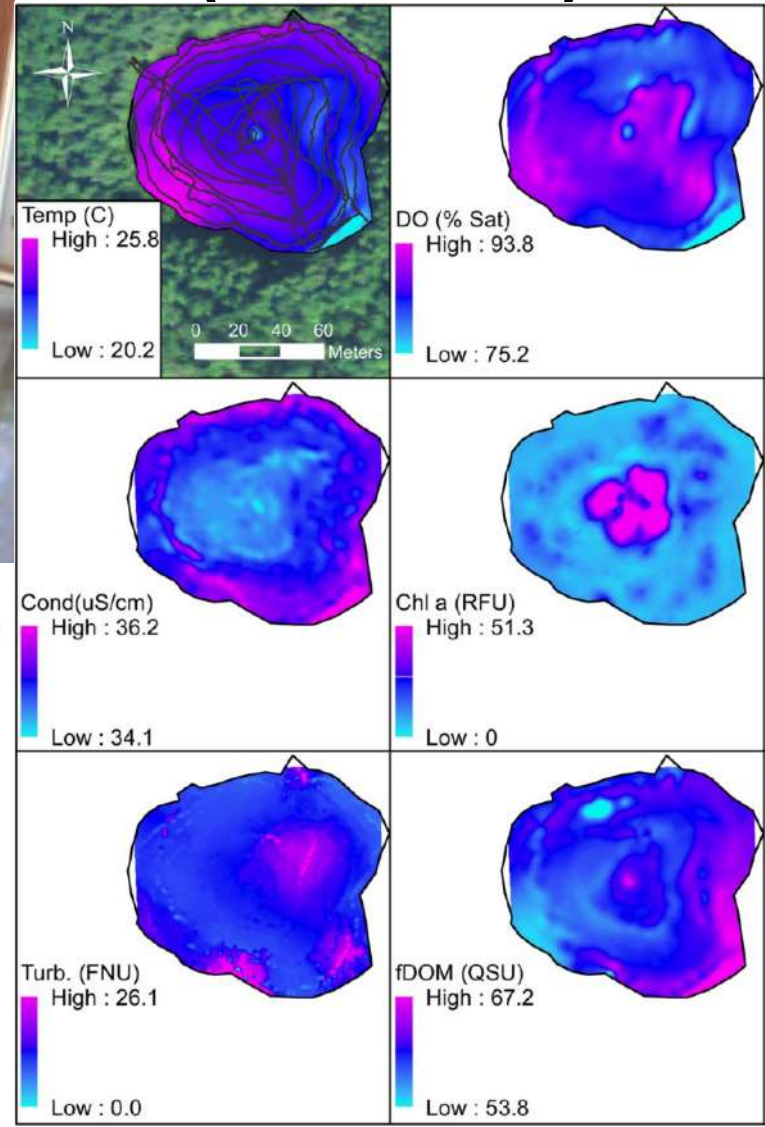




Highland Lake Watershed Hydrology



Multiparameter Sondes (YSI EXO2)



Fluorescence and Absorbance Spectroscopy



Fluorometer

Chlorophyll a

Phycocyanin

Absorbance spectra (CDOM)

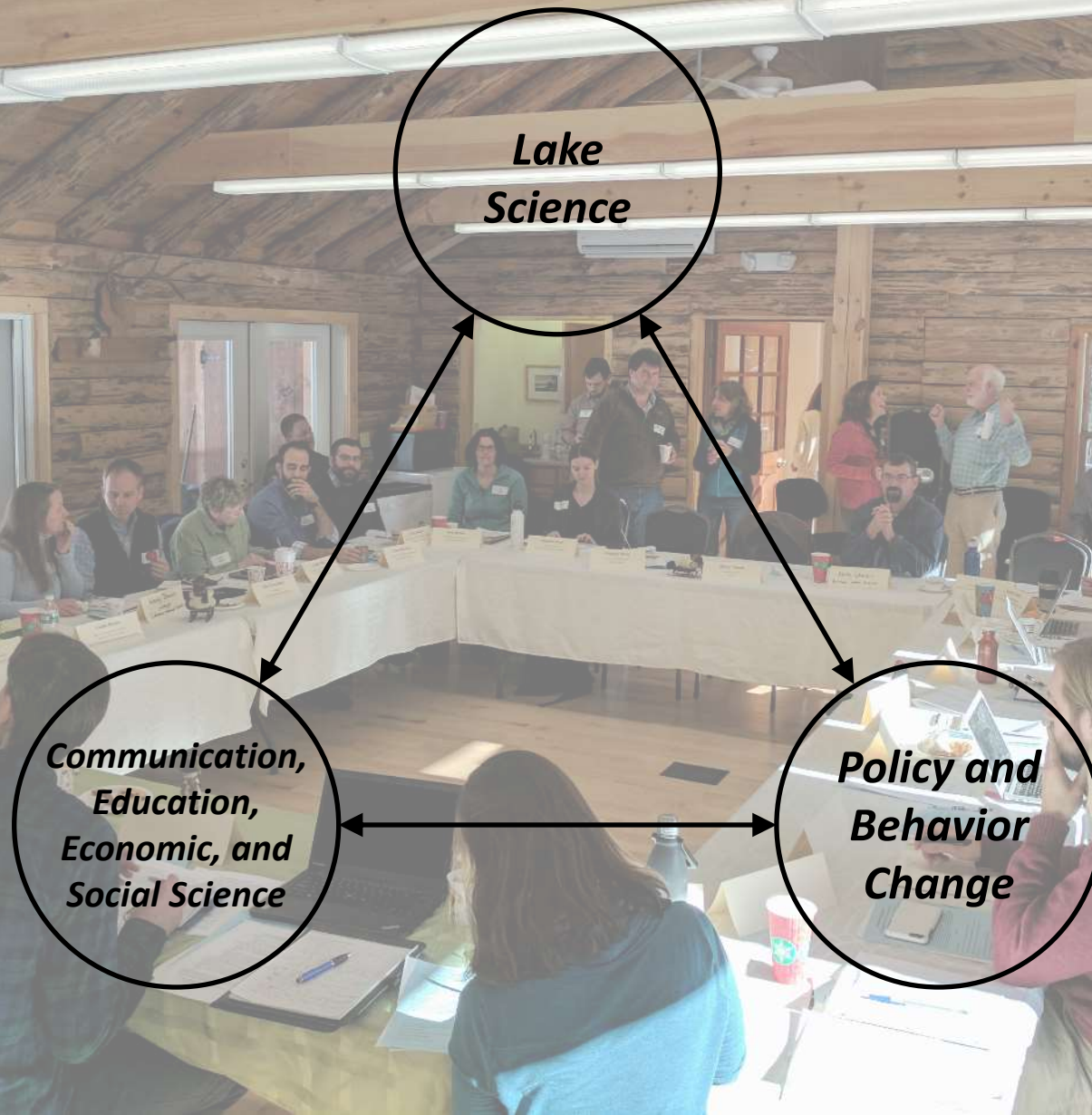
fDOM

Nutrient chemistry



UV-Vis Spectrophotometer

Maine Lakes Collaborative



Project Learning Tree

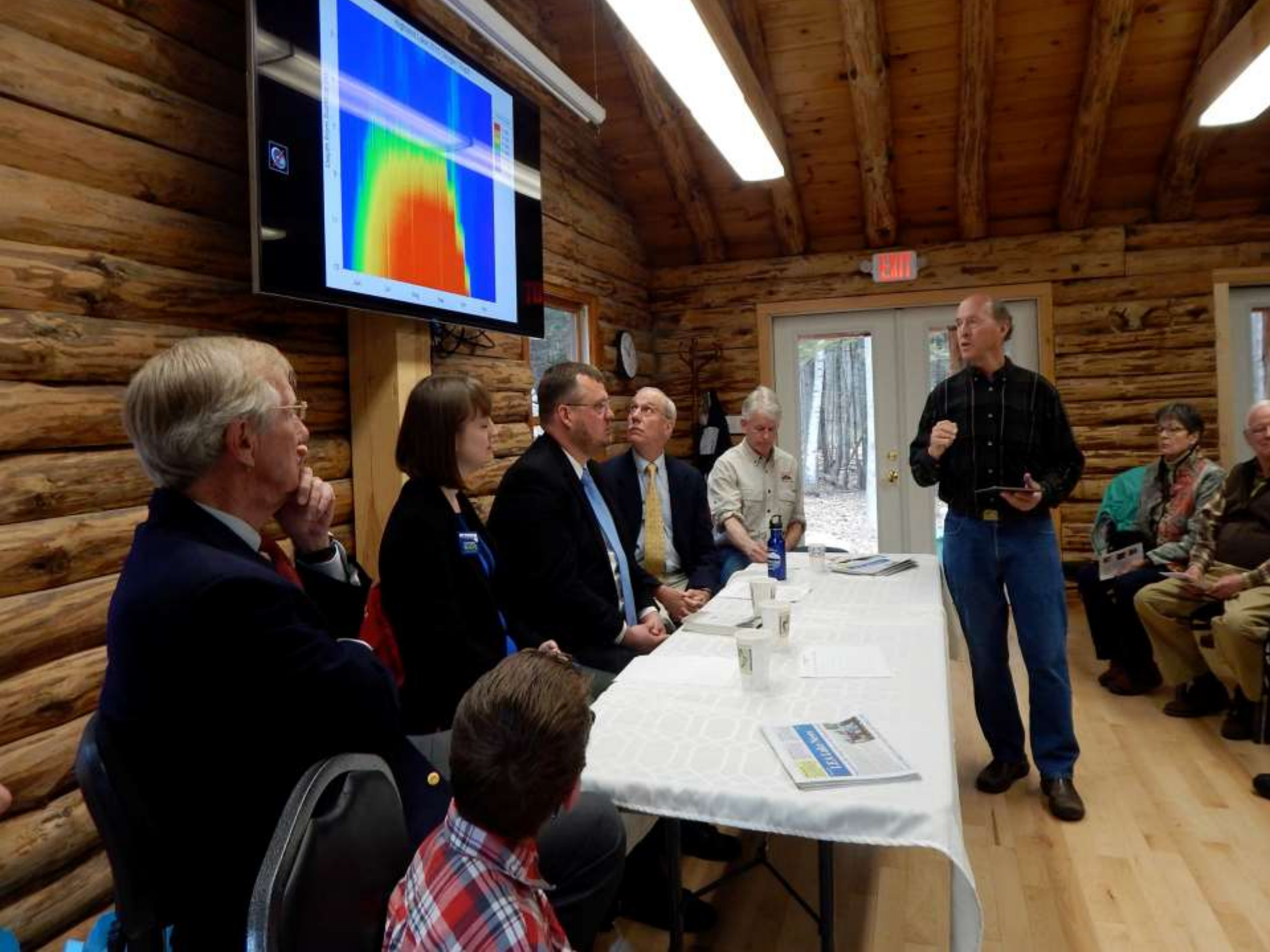


Stormwater Infrastructure Mapping



Project Oversight





Maine Lakes Collaborative

