

A photograph of a forest path with sunlight filtering through the trees. The path is made of stones and is surrounded by dense green foliage and trees. The sunlight creates a warm, golden glow in the center of the image.

**More Trees, Not More Treatment:  
A Utility-Land Trust Partnership to  
Conserve Forests**

**Laurel Jackson  
Paul Hunt  
Portland Water District  
Portland, Maine**

# Acknowledgements



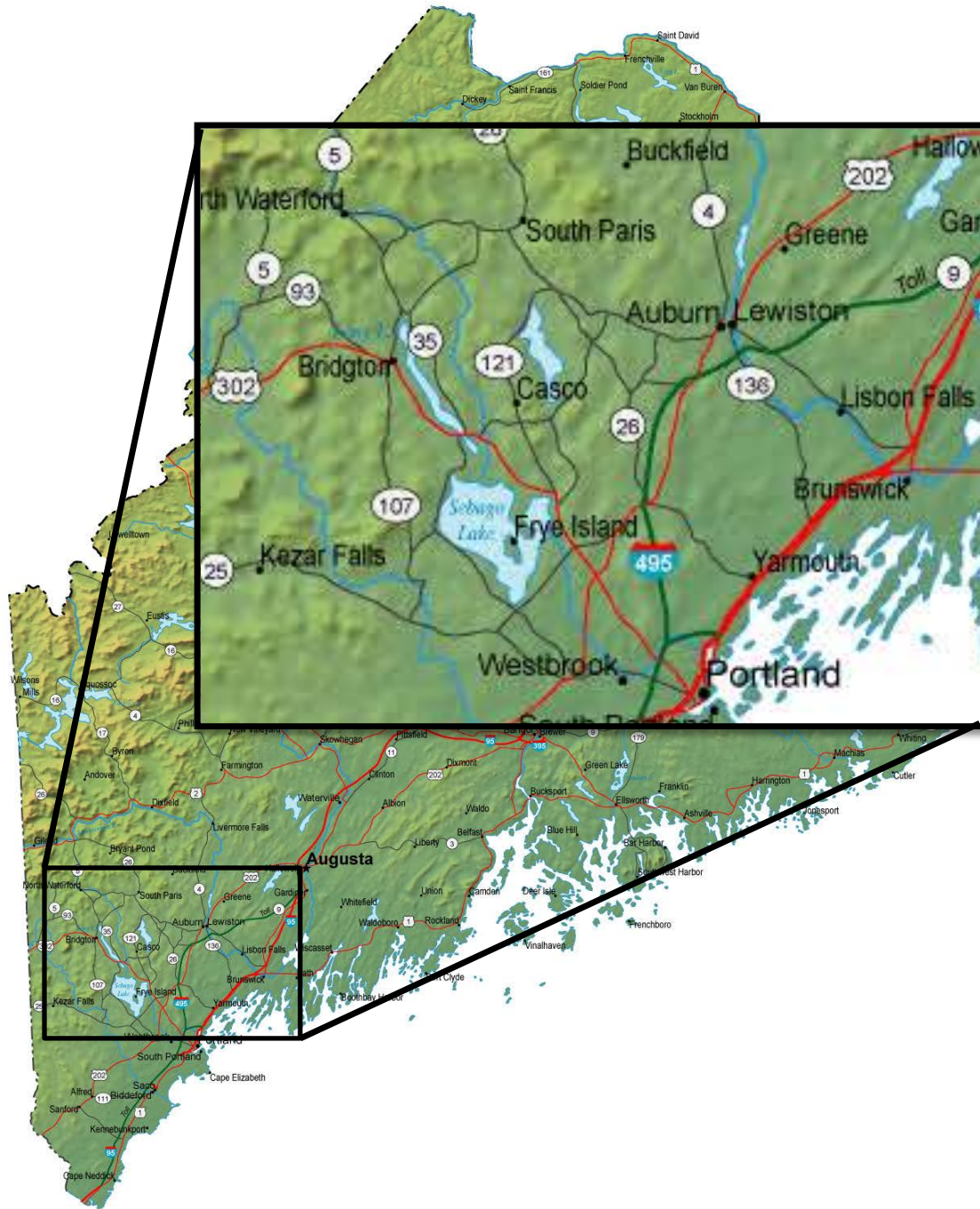
- **The Challenge**
- **The Land Conservation Program**
  - How it Happened
  - How it Works
- **Goals and Progress To Date**
- **Questions?**



# Portland Water District



- Drinking Water since 1908
- 22 Million GPD
- 200,000 consumers in 11 communities
- Sebago Lake source



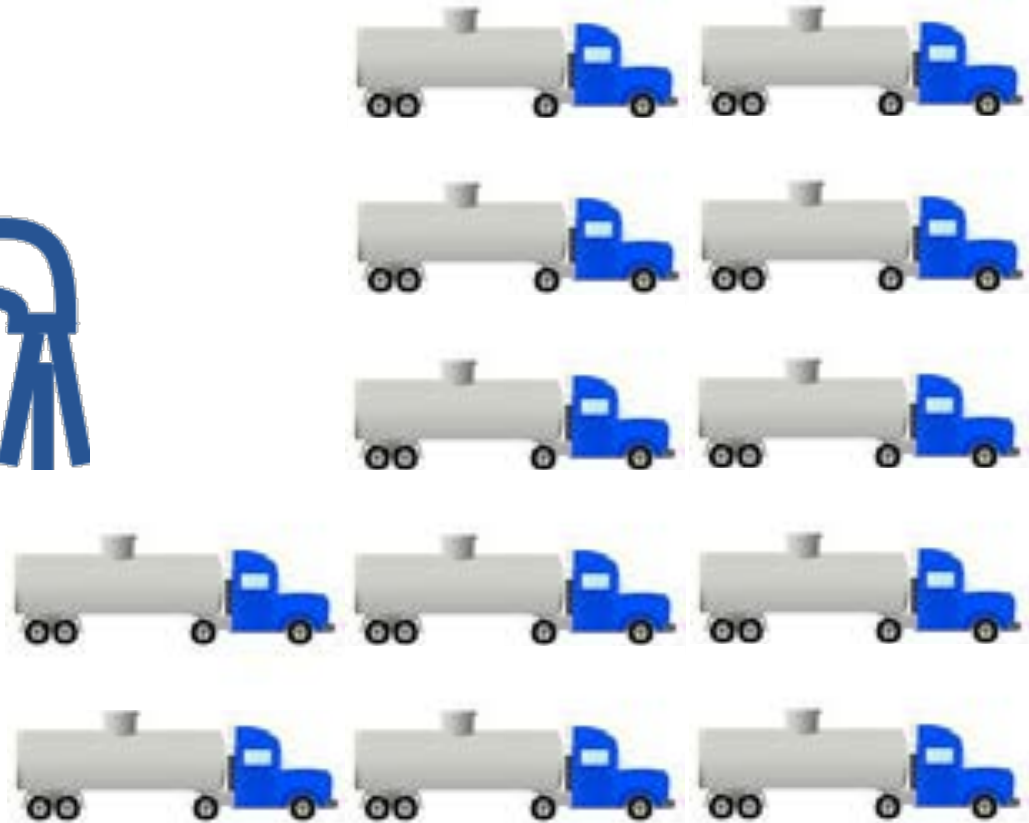
# *Sebago Lake*



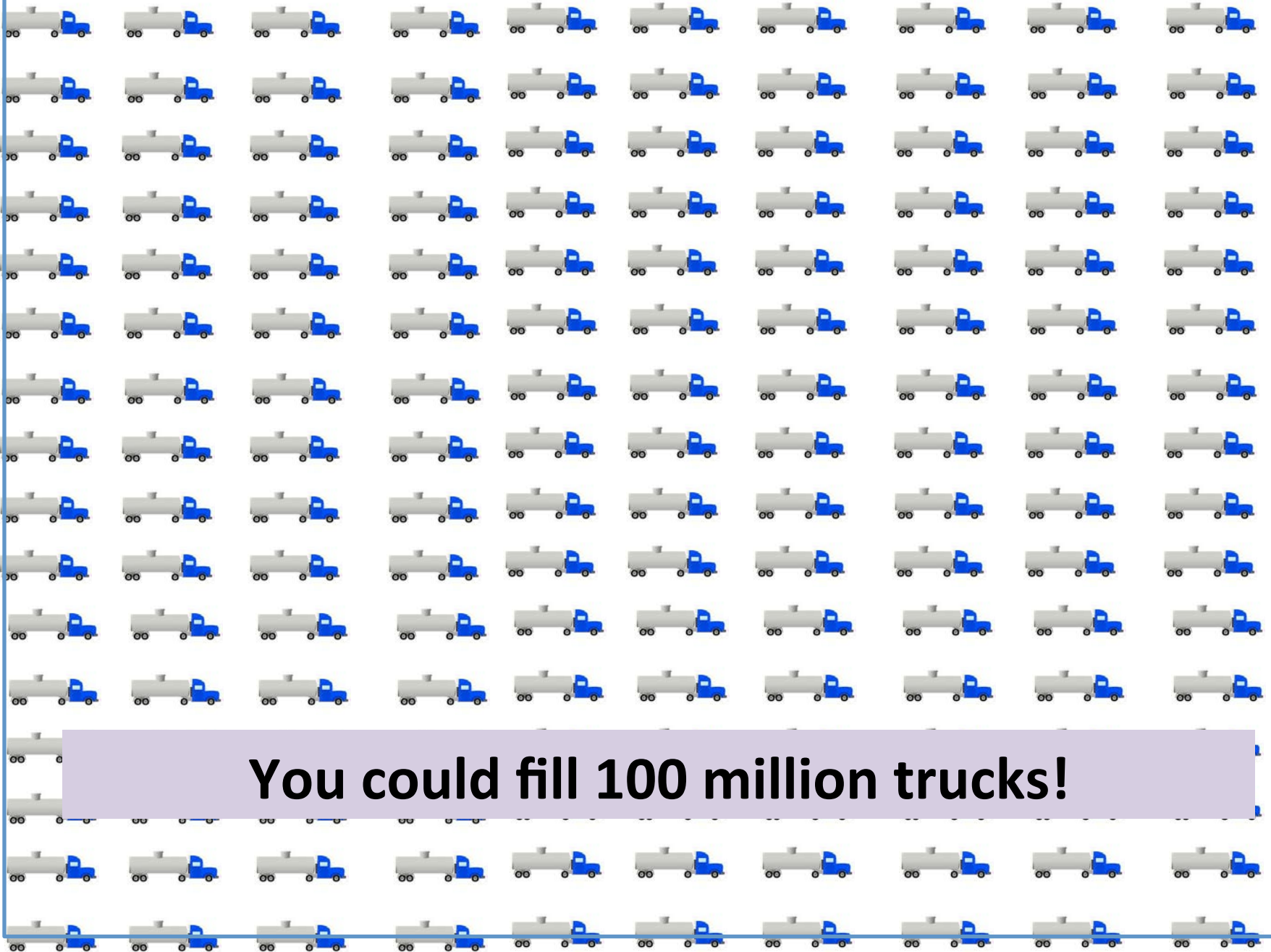


10,000 gallons

50 feet long



**How much water is in Sebago Lake?**



**You could fill 100 million trucks!**



**Water trucks filled with Sebago Lake water  
would stretch from the earth  
to the moon and back.**

**TWICE!**



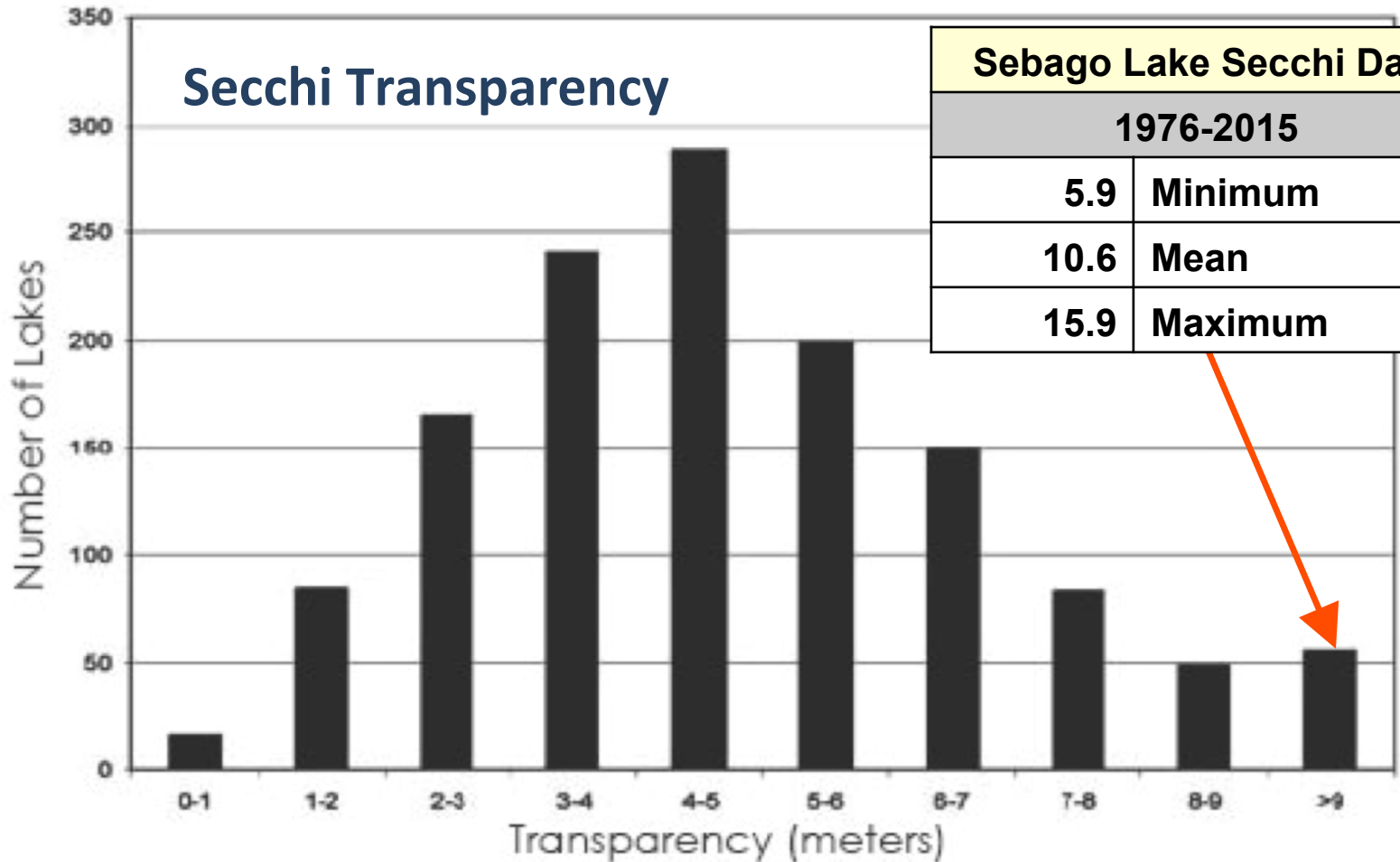


**100 years in  
storage**

# How Clean is Sebago Lake?



# Secchi Transparency

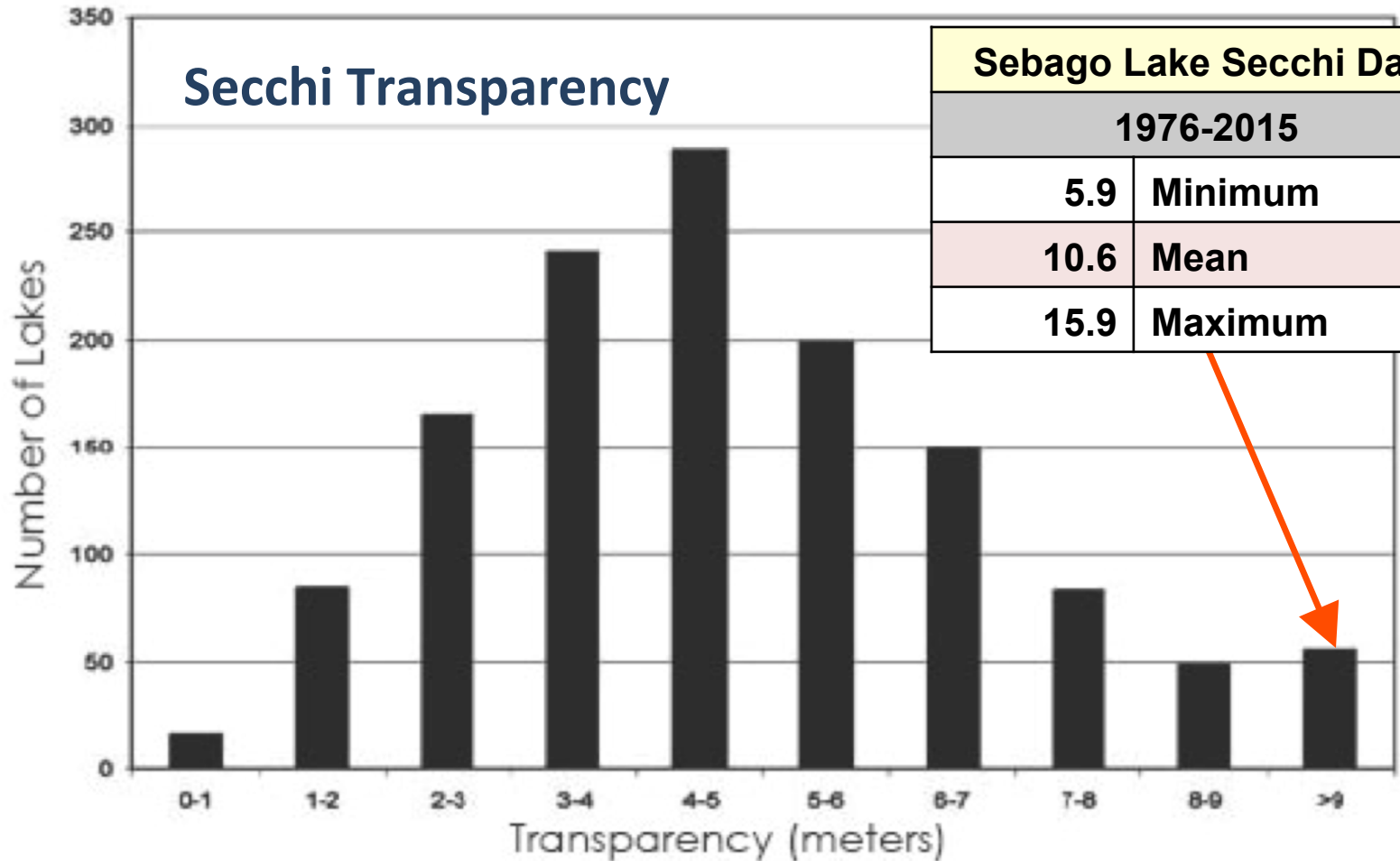


Sebago Lake Secchi Data	
1976-2015	
5.9	Minimum
10.6	Mean
15.9	Maximum



MINIMUM: 0.5    MAXIMUM: 15.5    MEAN: 4.84    N: 1334

## Secchi Transparency



### Sebago Lake Secchi Data

1976-2015

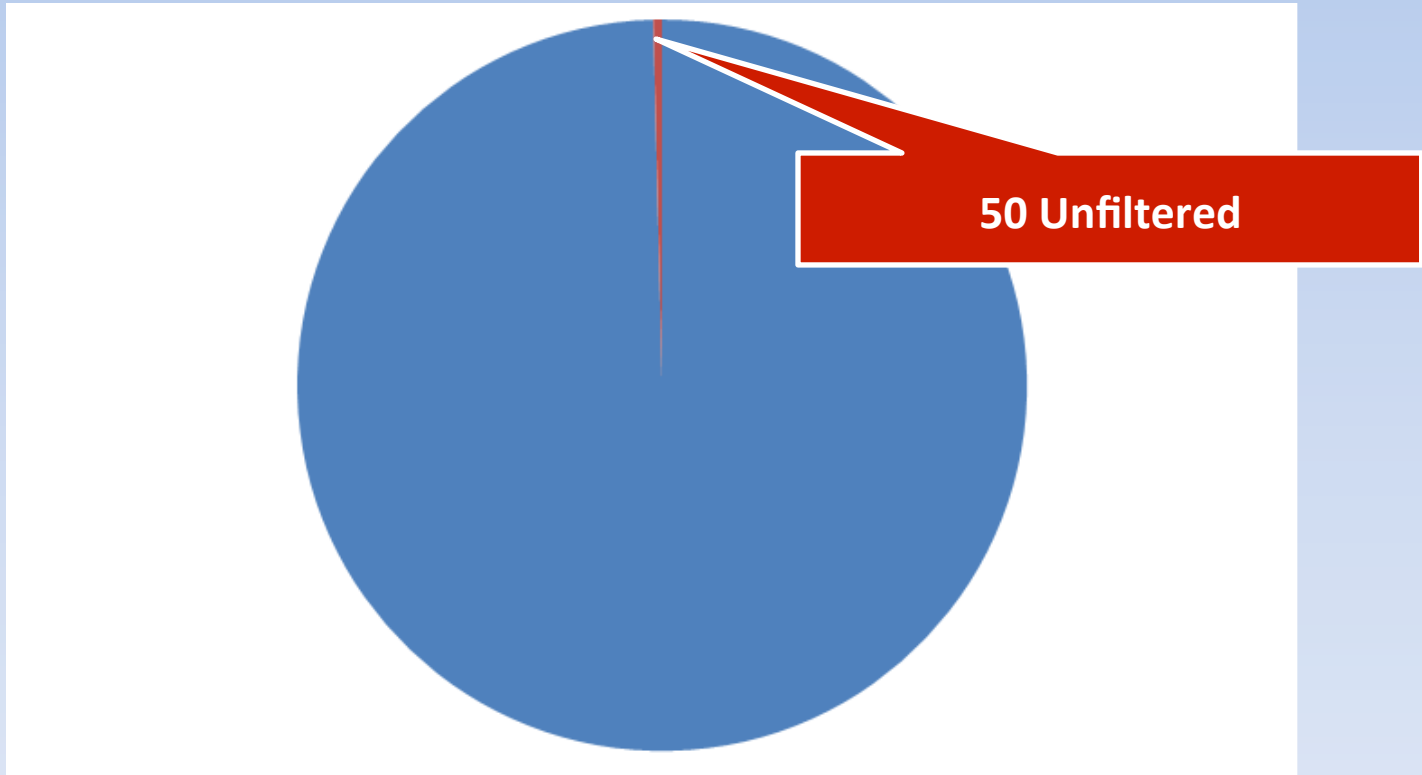
5.9 Minimum

10.6 Mean

15.9 Maximum

MINIMUM: 0.5    MAXIMUM: 15.5    MEAN: 4.84    N: 1334

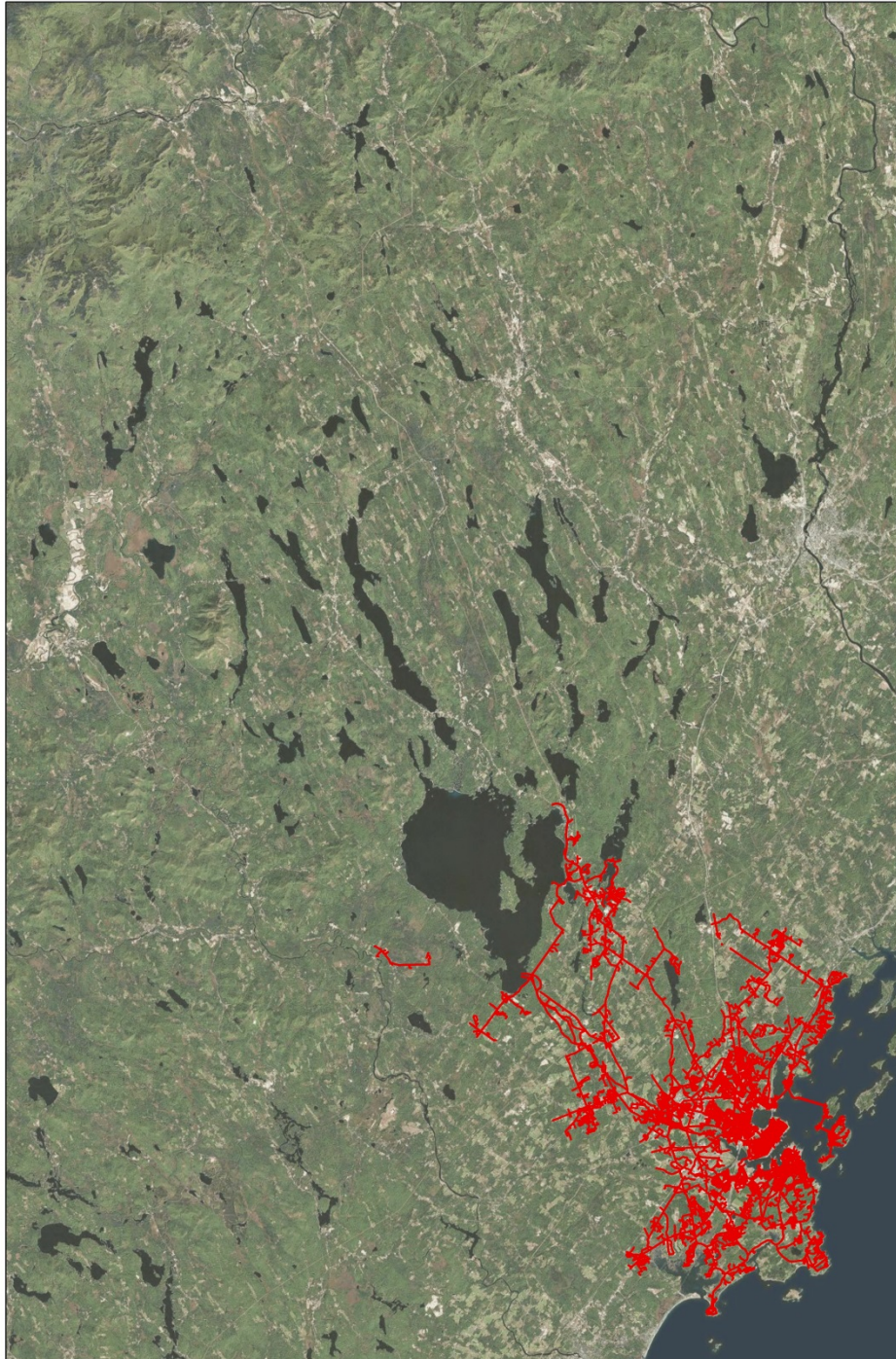
# How Clean is Sebago Lake?



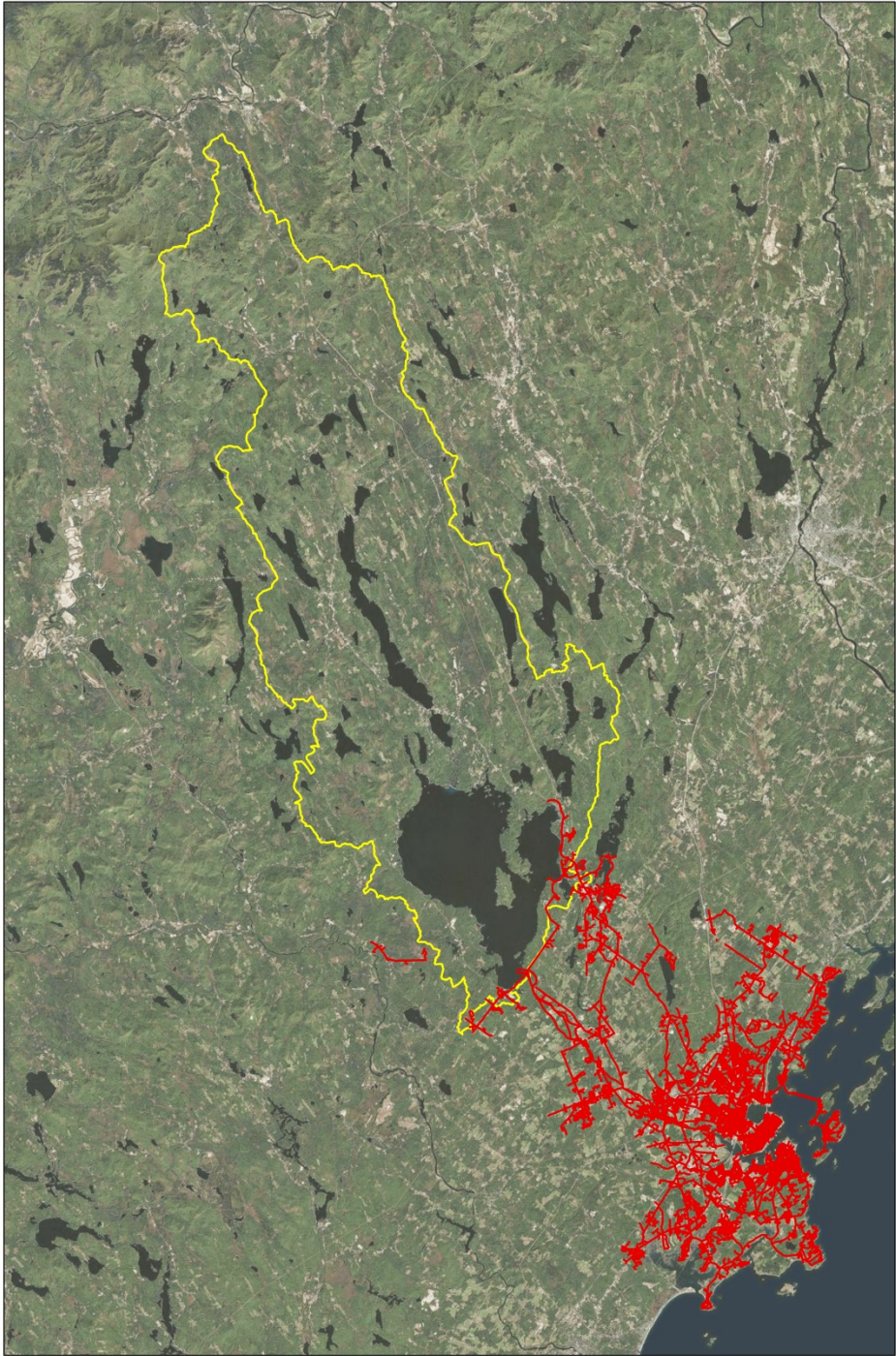
**13,000 Public Water Systems**

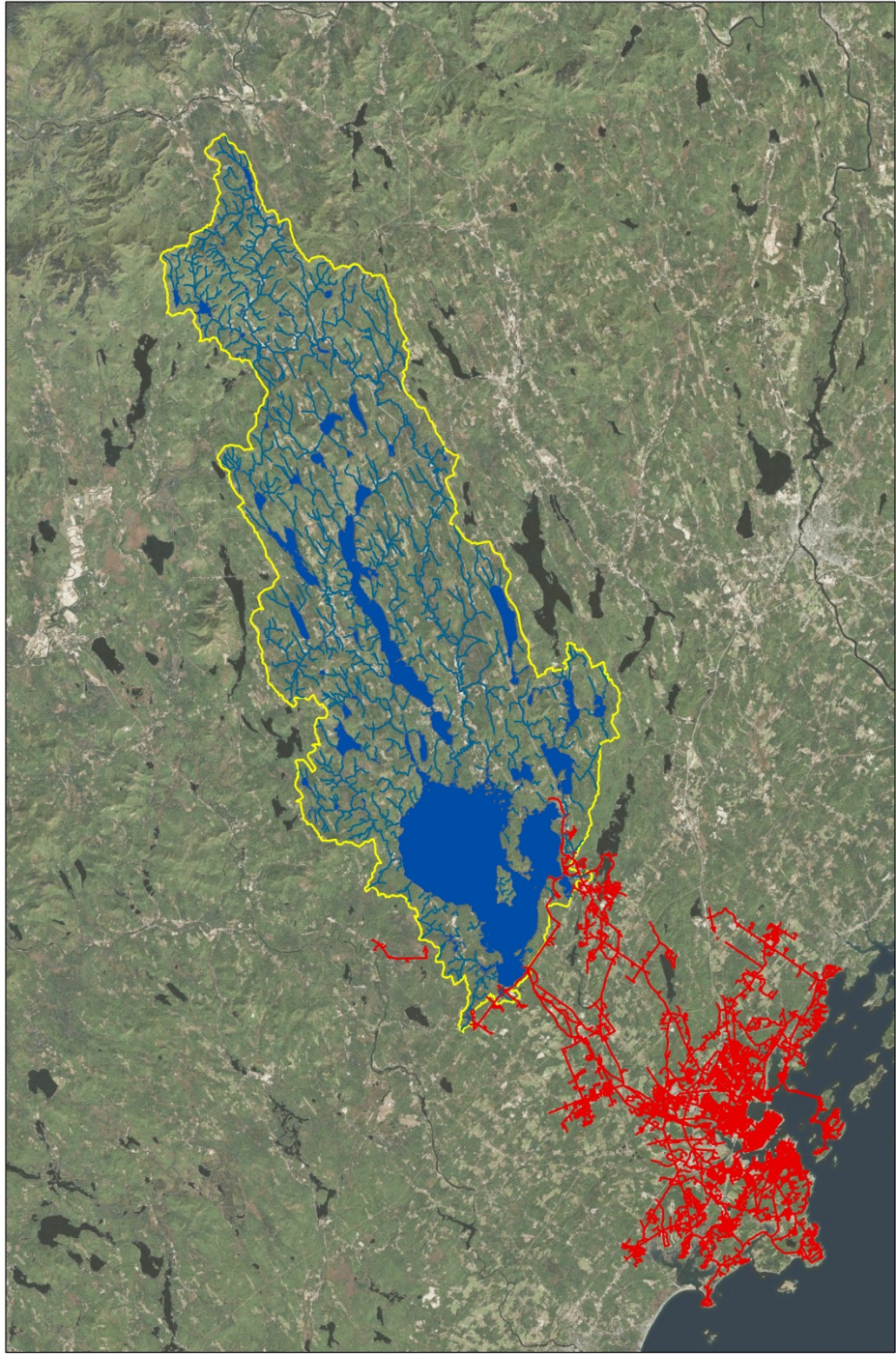
# The Challenge?

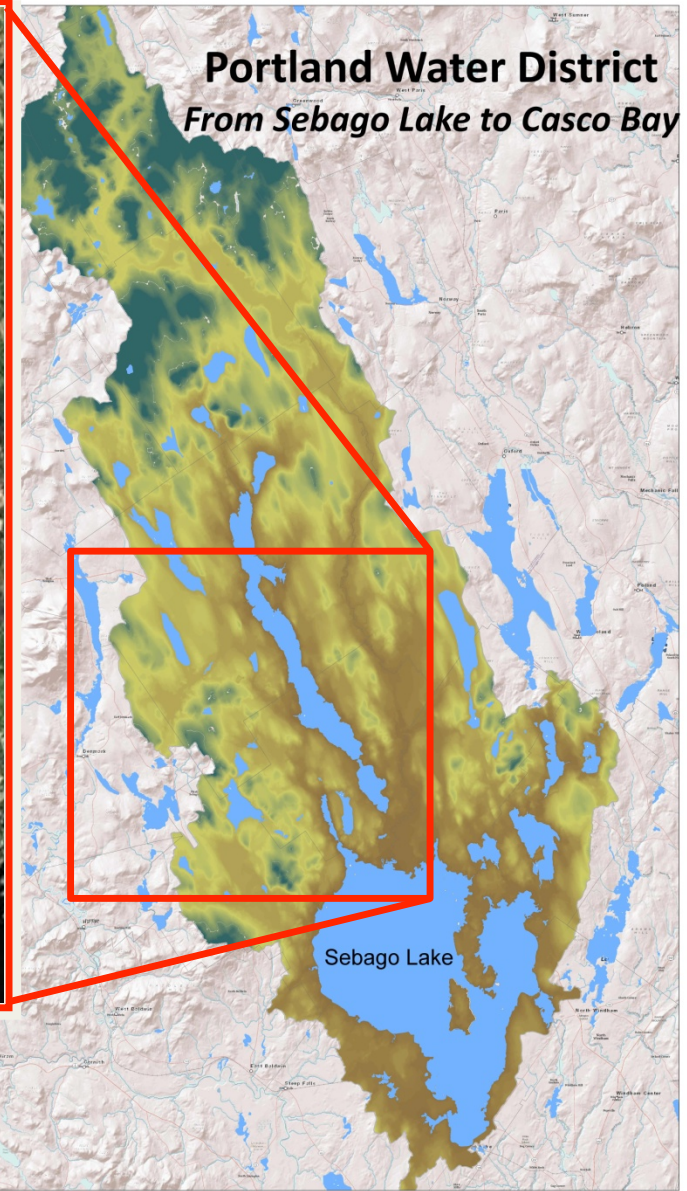












A photograph of a dense forest with a dirt path leading through tall trees. The trees are mostly deciduous with green leaves, and the path is made of dirt and fallen leaves. The lighting is soft, suggesting a slightly overcast day or a shaded forest interior.

**So What is the Challenge?**  
**91% Privately-owned**



# First: Ad-hoc Requests

- No ranking or prioritization
- No formula for valuing them



## Second: A Policy

- Trustee-approved
- Stated District priorities
- Signaled a desire to conserve more

## Third: A Program

- Established a process
- Led to a scoring system
- Earmarked money

25%

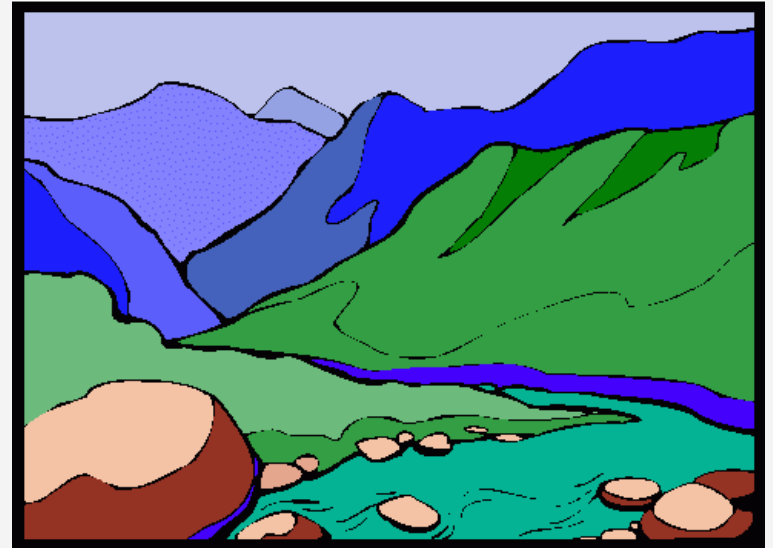


# How it works



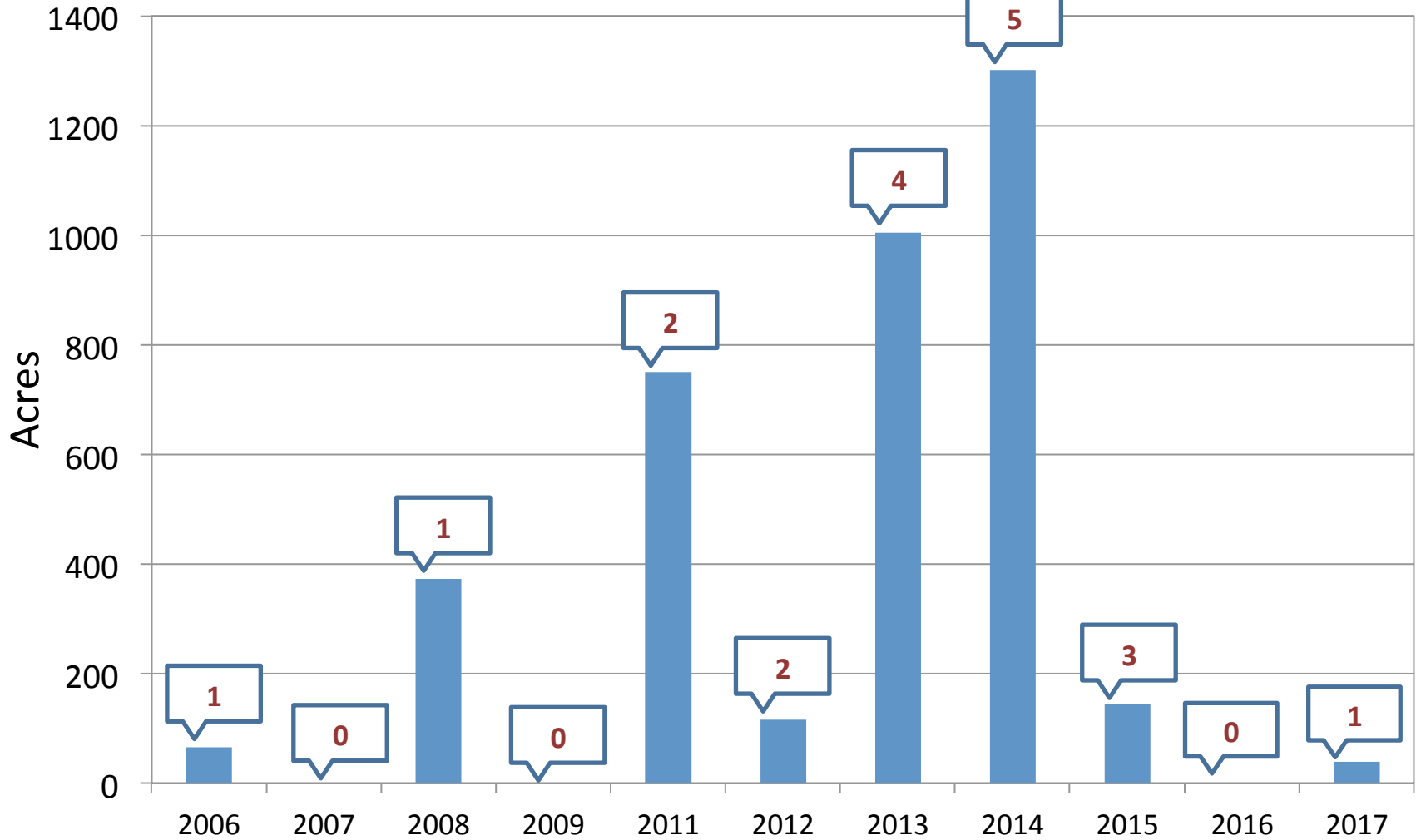
# PWD Analysis


- Proximity to water
- Proximity to Sebago Lake
- Wetlands
- Percent forest
- Aquifers



**Keep it simple**

# Acres Conserved with PWD Support

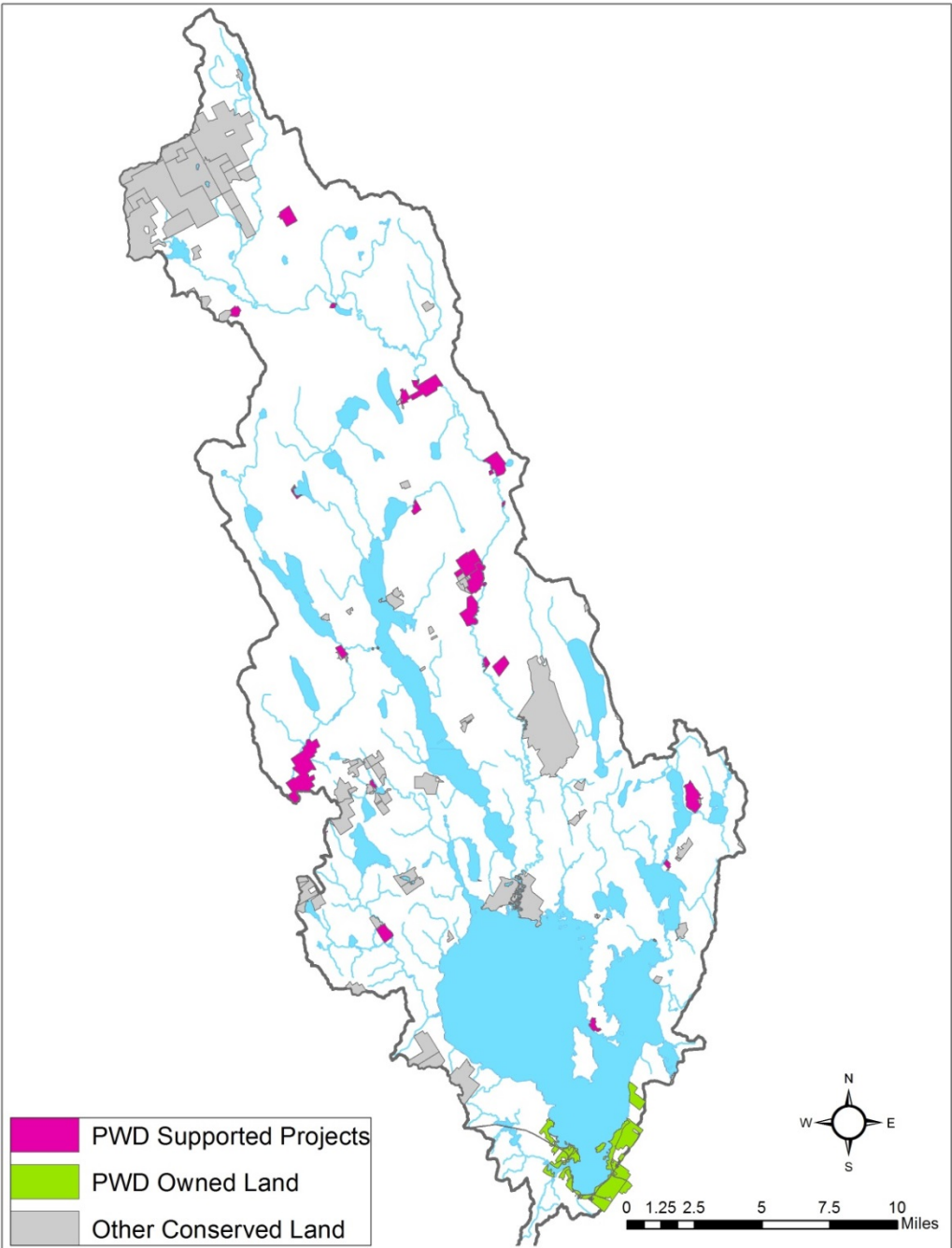




<b>Conservation Goal (Acres)</b>	
<b>Watershed Area</b>	<b>282,000</b>
<b>Acres Conserved as of 2012</b>	<b>28,000</b>
<b>25-year Goal</b>	<b>56,000</b>

## PWD Conservation History, 2000-Present

		Projects	Acres	PWD contribution
Pre 2007	Ad Hoc Requests	2	366	\$16,000
2008-2012	Policy	5	1216	\$28,650
2013-present	Program	11	2451	\$462,868
<b>TOTALS</b>		<b>18</b>	<b>4033</b>	<b>\$507,518</b>



# What next?

- **Regional Conservation Partners**
- **A Water Fund?**



# Questions?

