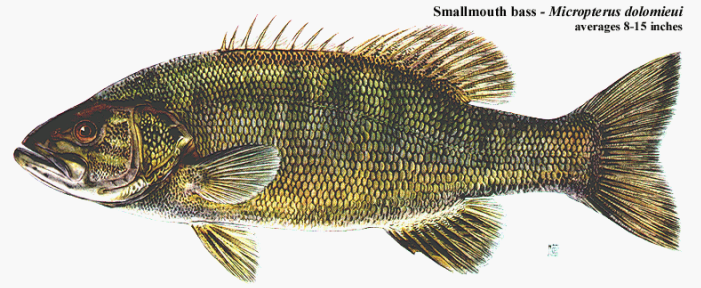


The Status Of Non-Native Fish Species in the Penobscot System

Smallmouth bass - *Micropterus dolomieu*
averages 8-15 inches



Northern Pike- *Esox lucius*
averages 25 - 36 inches



Largemouth bass - *Micropterus salmoides*
averages 8-17 inches

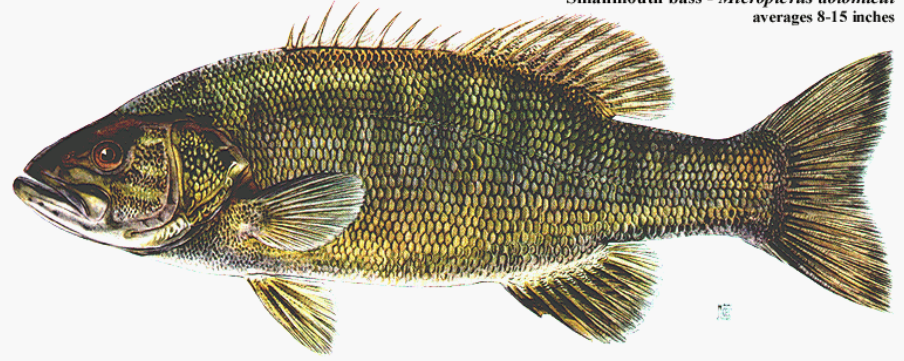


Merry Gallagher, Research Fishery Biologist,
MDIFW – Fisheries Research Section
650 State St, Bangor ME
Richard Dill, Regional Fishery Biologist,
MDIFW Enfield Regional Headquarters
73 Cobb Rd., Enfield ME

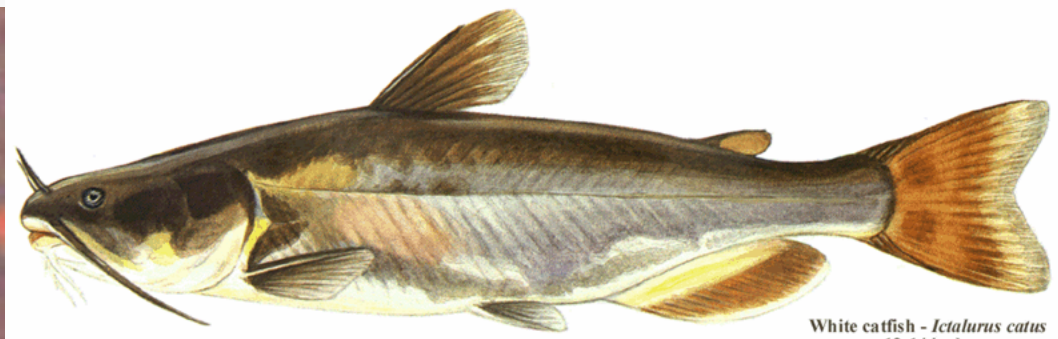


Largemouth bass - *Micropterus salmoides*
averages 8-17 inches

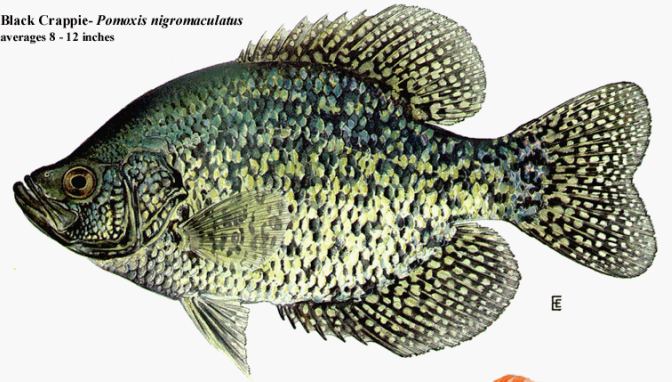
Smallmouth bass - *Micropterus dolomieu*
averages 8-15 inches



Black Crappie- *Pomoxis nigromaculatus*
averages 8 - 12 inches

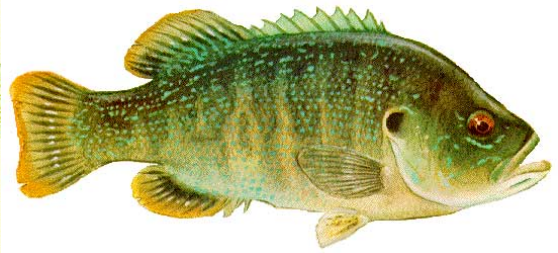
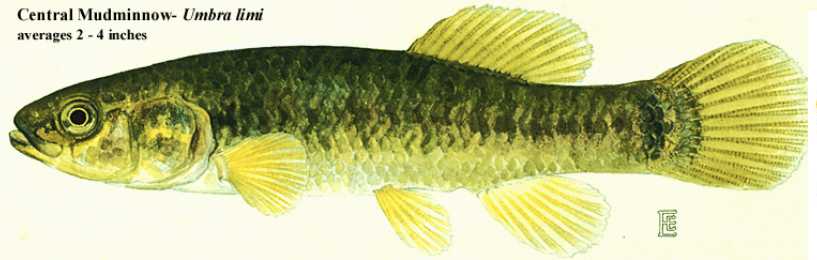


White catfish - *Ictalurus catus*
averages 12-14 inches



Goldfish- *Carassius auratus*
averages 12 - 14 inches

Central Mudminnow- *Umbra limi*
averages 2 - 4 inches

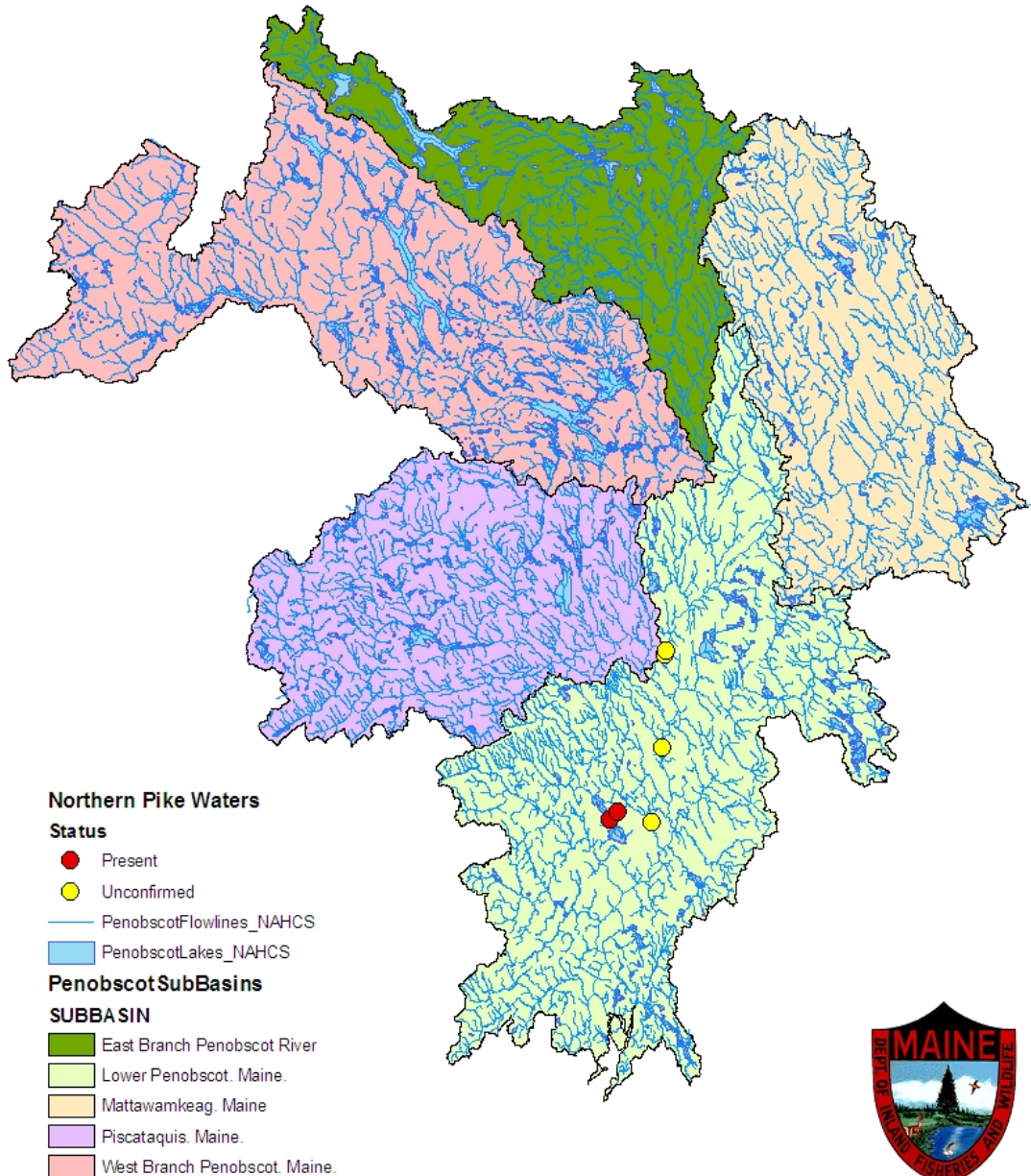


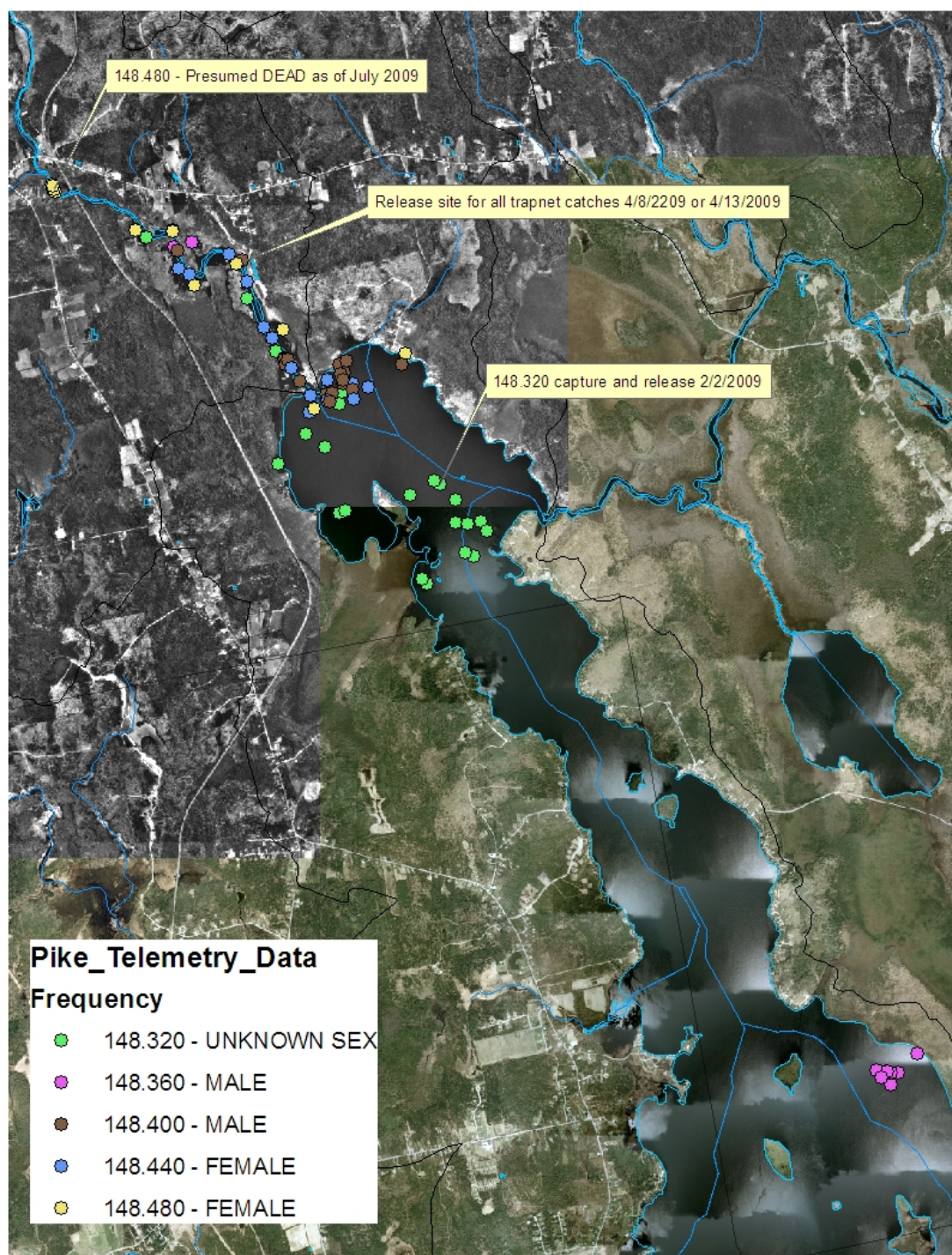
Northern Pike distribution in Penobscot drainage

Confirmed presence in Pushaw Lake (2003), Mud Pond (2006) and Pushaw Stream

Unconfirmed reports from Stillwater River (2006), Penobscot River in Greenbush (2008) and near Howland (2006) and at mouth of Merrill Bk, West Enfield (2008)

No size or bag limit fishing regs





Radio Telemetry project on-going

Have identified pre-spawning staging, inlet spawning, and over summer holding areas

Active removal efforts at spawning areas

Currently, 4 active tags

Tracked weekly

Tags will be active for at least another year

Smallmouth bass distribution

Well established,
popular sportfish

General Law regs

BASS (largemouth and smallmouth)

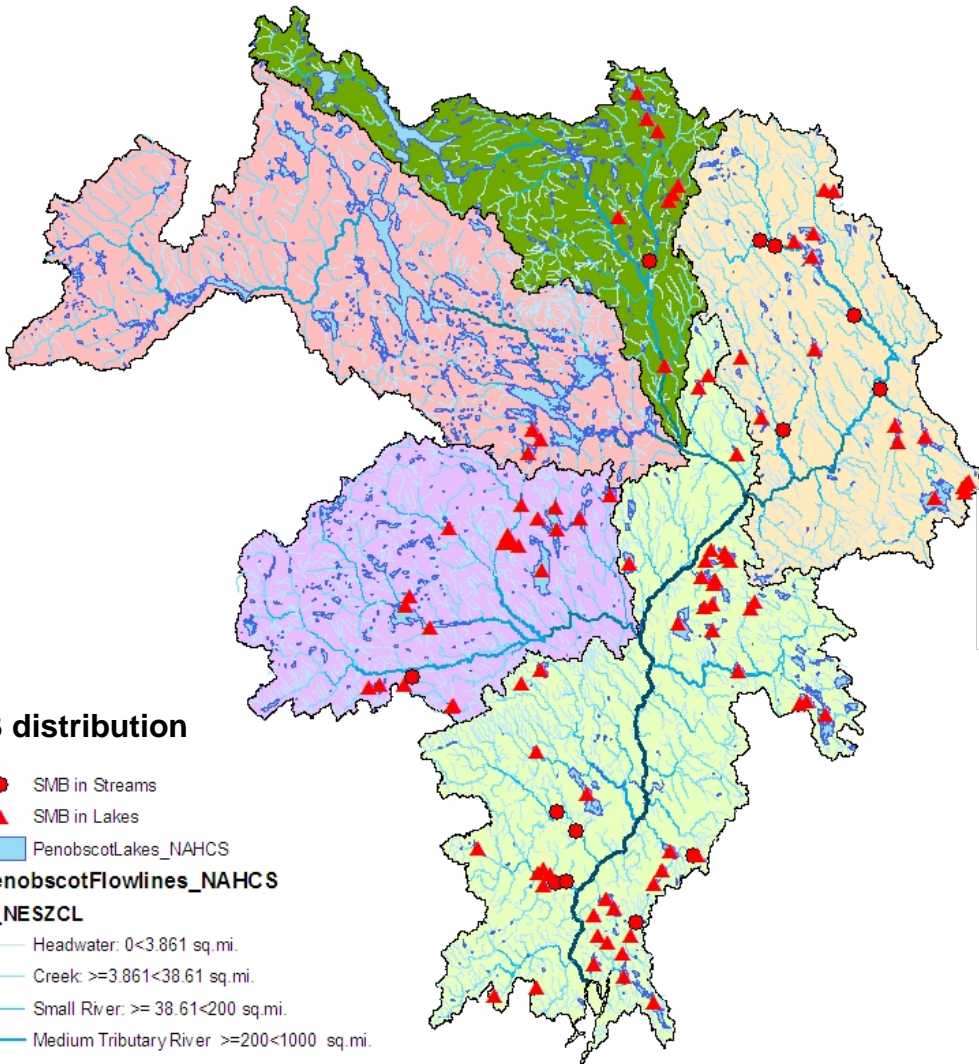
April 1 - June 30: Daily bag limit: 1 fish; artificial lures only; minimum length limit: 10 inches
July 1 - September 30: Daily bag limit: 3 fish; minimum length limit: 10 inches, only 1 exceeding 14 inches.
October 1 - March 31: Daily bag limit: 1 fish; minimum length limit: 10 inches.

Many no size or bag waters:
E Br Penobscot, W Br,
Kenduskeag, Cold St P.,
Upper Cold St P, West L.,
Pleasant L., Schoodic L.,
Pemadumcook L.,
Millinocket L.

Some tribal waters have
different regs

SMB distribution

- SMB in Streams
- ▲ SMB in Lakes
- PenobscotLakes_NAHCS
- PenobscotFlowlines_NAHCS
- D_NESZCL
 - Headwater: 0<3.861 sq.mi.
 - Creek: >=3.861<38.61 sq.mi.
 - Small River: >= 38.61<200 sq.mi.
 - Medium Tributary River: >=200<1000 sq.mi.
 - Medium Mainstem River: >=1000<3861 sq.mi.
 - Large River: >=3861<9653 sq.mi.
- PenobscotSubBasins
- SUBBASIN
 - East Branch Penobscot River
 - Lower Penobscot, Maine.
 - Mattawamkeag, Maine
 - Piscataquis, Maine.
 - West Branch Penobscot, Maine.



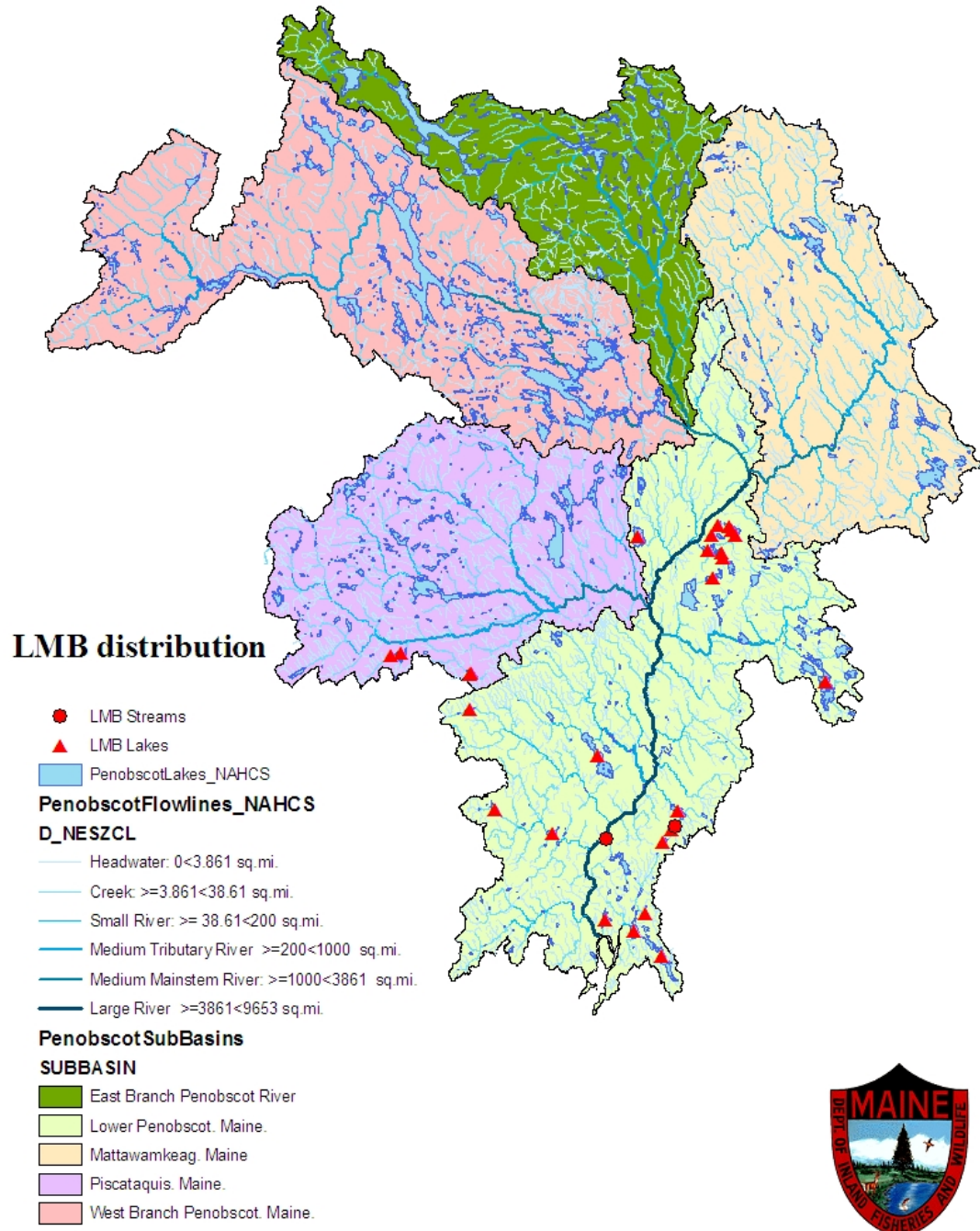
Largemouth bass distribution

Documented in 24 lakes and 2 stream sites; unconfirmed in 2 ponds

1994 first cases in the Penobscot

Mostly General Law regs

Exceptions: Snag P – No size or bag



Black Crappie distribution

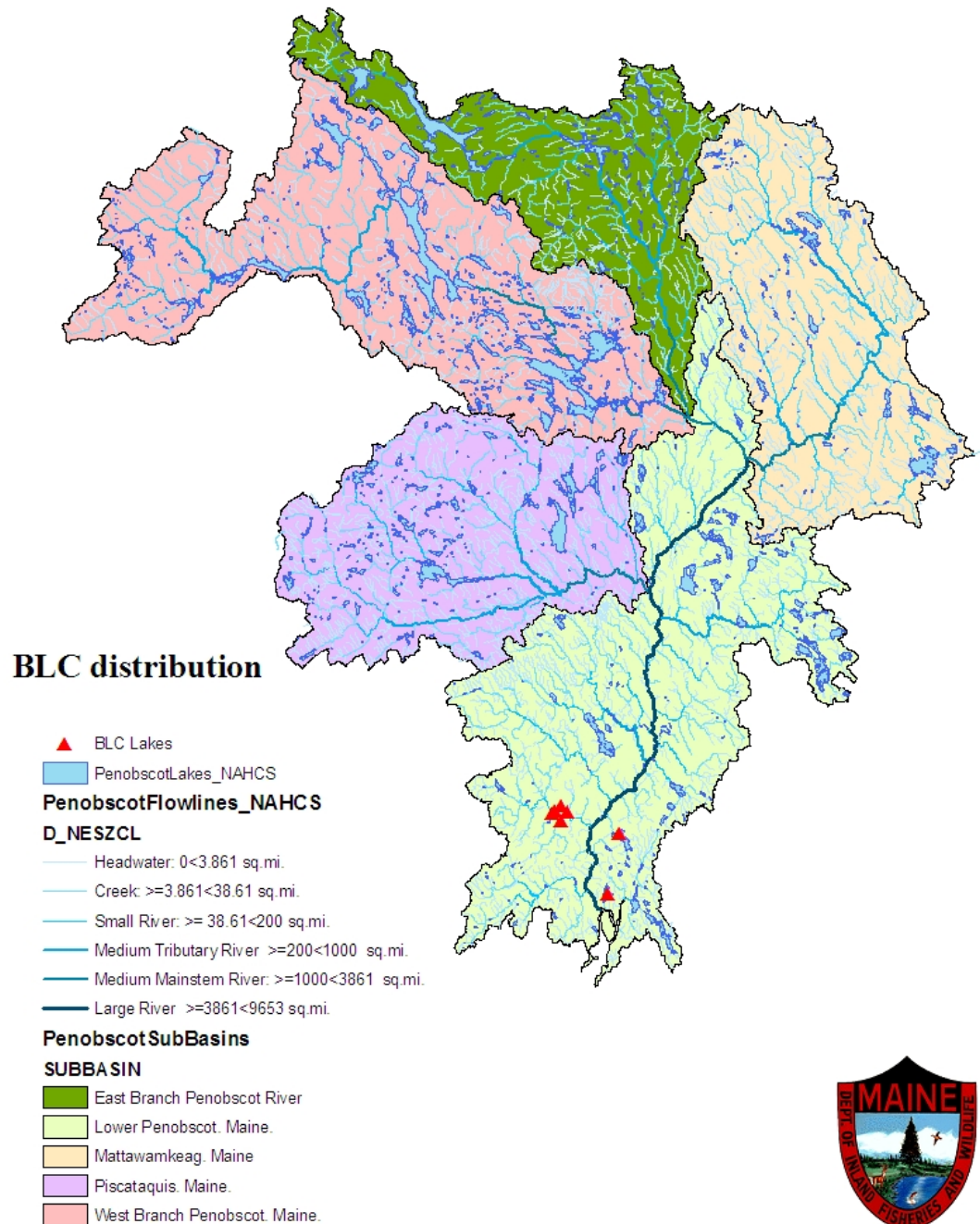
Documented in 7 lakes

First occurrence 1957
Hammond P

This species does not seem to readily disperse to unoccupied habitats

Current distribution reflects 3 into events??

No size or bag regs



Other species:

CMM – documented in Pushaw Stream downstream of baitfish farm; circa 1998? Probably an accidental release from the farm. Ecological effects unknown.....

WCF – documented in Penobscot River; angler catch below Cianbro 2009

GSF – private pond in Argyle, circa early 90's? Rotenone treatment, follow up survey work, no GSF since

GLF – periodically show up in private / garden ponds; Bangor Home Depot drainage pond ~2002; pond on Orono golfcourse 2007: both rotenoned