

# The Challenges of Long Term Invasive Plant Management in Wetland and Riparian Environments



**Andrew Priestley**

Invasive Plant Species Management Supervisor,  
Vegetation Control Service, Inc.

**Andrea Southworth**

Stewardship Committee Volunteer,  
Cape Elizabeth Land Trust



## Working Near Water

Japanese Knotweed (*Reynoutria japonica*)  
on a river edge

# Why do we *NEED* to work near water?

- Invasive plants love disturbance
- Water helps nourish and spread invasives
- Waterways are primary “vectors of transmission”



# What are the challenges of working near water?

- Natural
- Regulatory
- Logistical and Practical
- Building Support
- Funding
- Mechanical Control Efforts



# Natural Challenges

- Tides and water levels
- Erosion
- Weather
- Natural life cycles



# Regulatory Challenges

- Shoreland Protection Act
- State wetland protection regulations
- State legislation
- Local regulations and bylaws



# Logistical and Practical Challenges



# Logistical and Practical Challenges

- Access
- Materials selection
- Equipment selection



Working around water is complicated



# Logistical and Practical Challenges

- High water can stop a project in its tracks
- Heavy activities can be confined to certain times of year due to bird migration and nesting or ground conditions



Project timing is important

# Building Support: Justification

## Invasive Management Plan

Overview

CELT Stewardship





# Building Support: Education





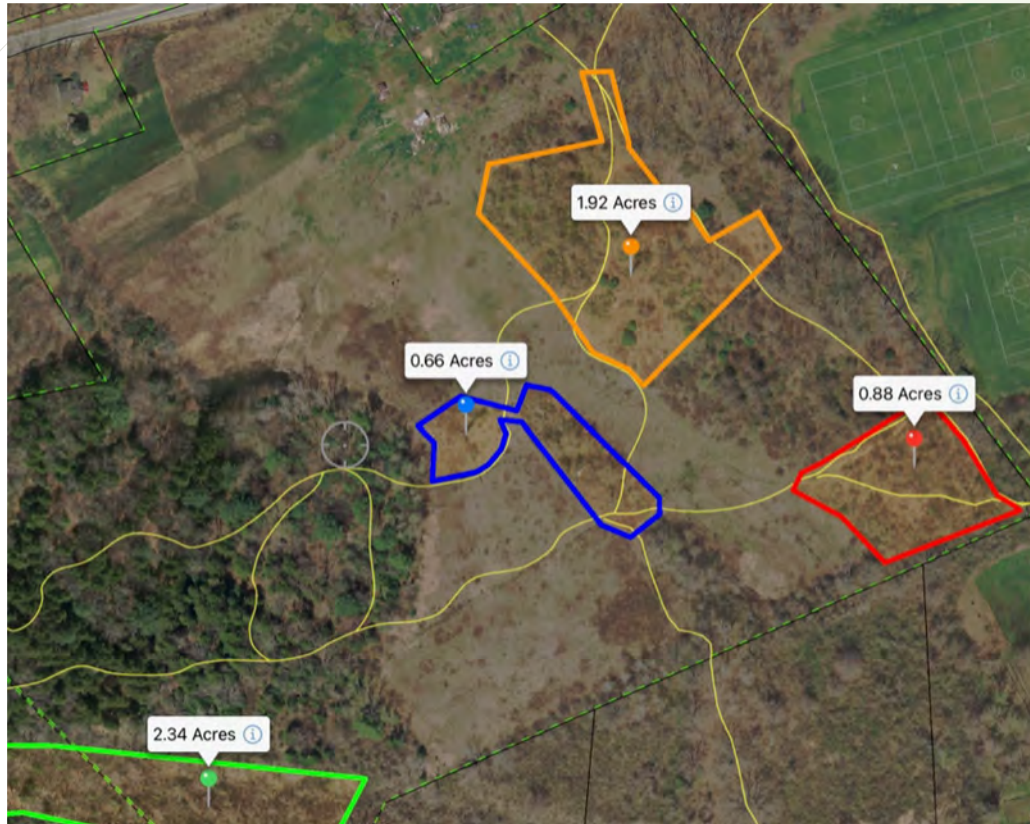


I just copied some characters from a  
book  
for my journal

# Building Support: Communication



# Funding: Difficult to obtain





# Funding: Length of project?



# Funding: Next steps





**Funding: Not for adjoining properties**

## Mechanical control: Effective for large projects?





## Mechanical control:



“A different project, please!”

## In conclusion:

It takes a lot of people, working together, making good decisions based on the conditions at hand to get the work done, while protecting our waters and habitats.



Of course, the biggest challenge is not getting lost in the beauty of it all....

