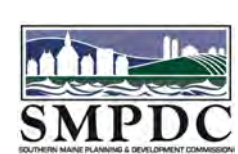


Challenges for Stakeholder Engagement: Charting a path from Vulnerability Assessment to a Regional Resilience Plan in Southern Maine



CLIMATE READY COAST SOUTHERN MAINE



Abbie Sherwin & Julia Maine

asherwin@smpdc.org

Southern Maine Planning and Development Commission



Jessica Brunacini & Kristen Grant

jessica.brunacini@maine.edu

Dani Boudreau & Gwen Shaunassey



**Jake Aman, Chris Feurt,
Annie Cox**



What does applied research to implement the Maine Climate Action Plan look like?



Climate Ready Coast Southern Maine Project Overview

What?

- 2-year project to develop a regional coastal resilience plan for 10 Southern Maine coastal communities

Why?

- Fill local and regional capacity gaps
- Continue and advance partnerships
- Coordinate on common priorities
- Leverage existing data, resources, and tools
- Enhance understanding of multi-hazard impacts and vulnerabilities
- Develop strategic priority projects and opportunities for advancing resilience



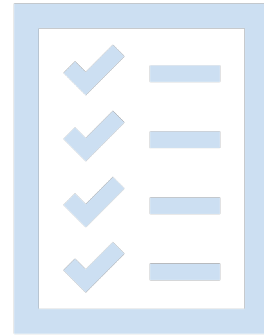
*Applied research centered around
intentional, iterative stakeholder engagement
to achieve project goal*

“Advance coastal resilience action in southern Maine by developing a **Regional Coastal Resilience Plan** that addresses **regional & municipal needs** through coordinated **conservation efforts**, sound **land use planning**, tailored yet transferable **adaptation policies**, & **nature-based solutions** to coastal hazard impacts.”

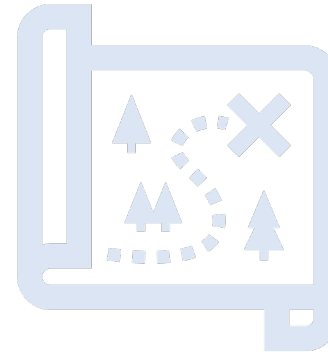
Intended Process



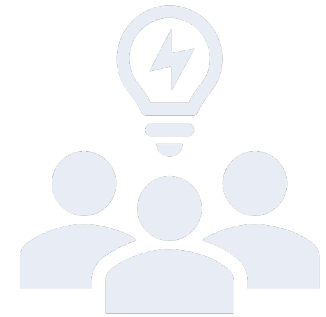
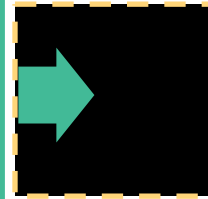
Identify coastal resilience planning needs



Conduct vulnerability assessment

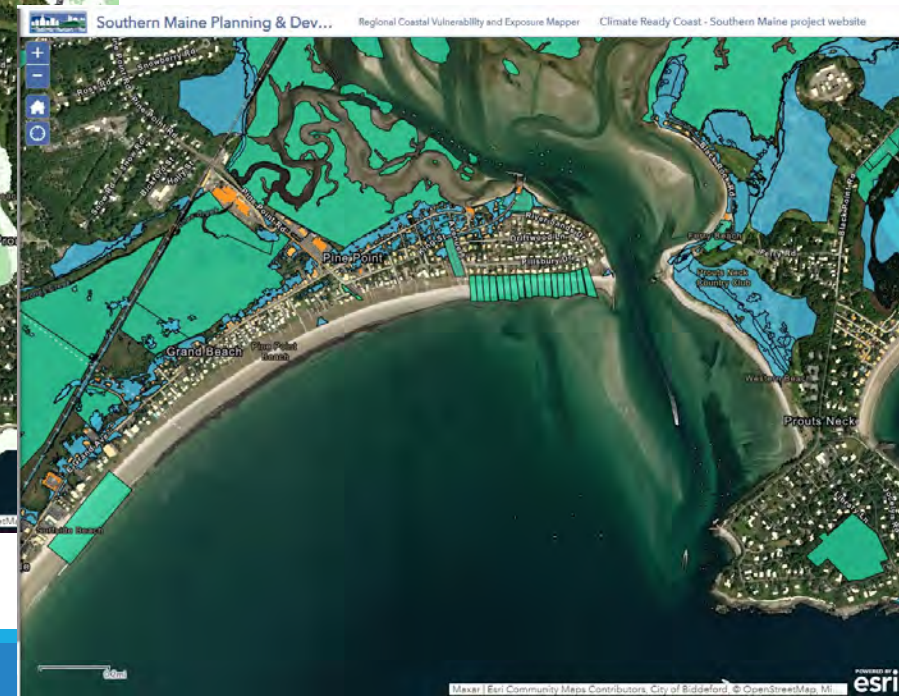
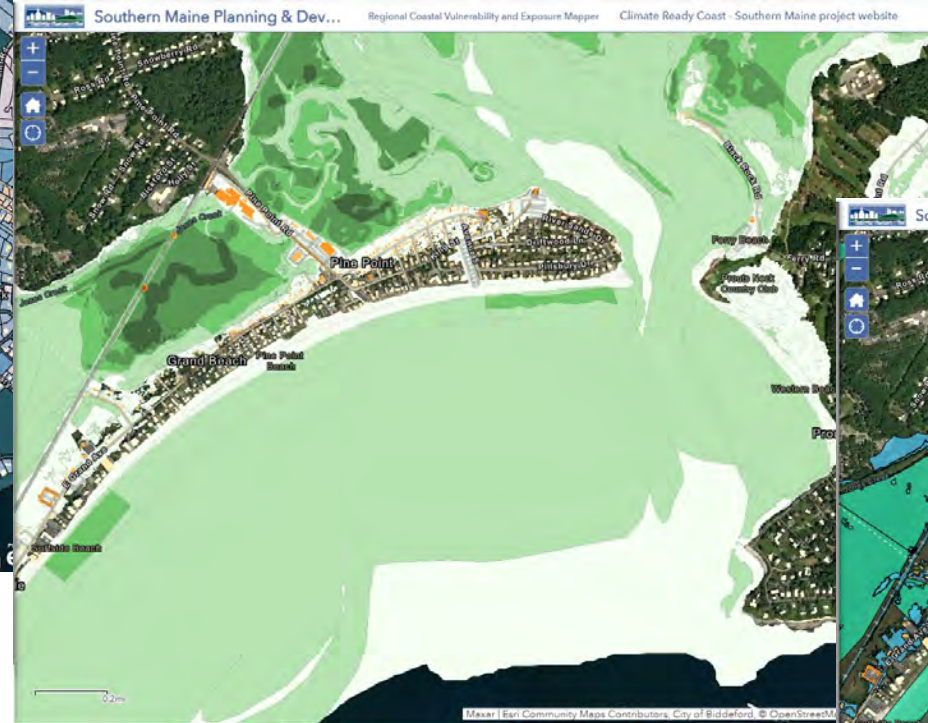


Develop decision-support mapping tool



Working Group uses tool to ID priority areas

Vulnerability Assessment “Black Box”



Modified Approach

Project Team ID's ~50 potential
Vulnerable Areas using mapping tool

Sub-regional Working Group Sessions:
1st Pass of Priority Vulnerable Areas

Project Team refines Profile Sheets,
develops & applies criteria to ID short
list of Priority Vulnerable Areas

Workshop: Working Group provides
input, engages in dialogue, applies new
criteria & local knowledge to refine list

Working Group votes on 15 Priority
Vulnerable Areas



Lessons Learned & Key Takeaways

Meaningful stakeholder engagement in coastal resilience planning takes time, requires flexibility, and can be challenging on many fronts...

...But it makes the results of our work more reflective of community knowledge, needs, values, and priorities!

KEY

Yellow Highlight = added to the short list of vulnerability hot spots

Italics = removed from short list of vulnerability hot spots

Crossed out and * symbol = hot spot area modified

	Municipality	Vulnerability "Hot Spot" Area	Notes
27	York	Short Sands	
29	Kittery	Seavey Island - West - Connection between Town and PNSY	All 7 were voted onto list of Priority Vulnerable Areas
31	Biddeford / Saco	Biddeford - Saco Downtown	
32	Scarborough	State Route 1 - Dunstan River	
43	Ogunquit	Perkins Cove	
44	Ogunquit	Ogunquit Beach Parking Area	
48	York	Long Sands Beach	
50	York	Upper York River - Smelt Brook	
17	<i>Kennebunkport</i>	<i>Marshall Point Road</i>	
18	<i>Ogunquit</i>	<i>Footbridge Beach</i>	
21	<i>Wells</i>	<i>Bourne Avenue - Moody Beach</i>	
22	<i>Wells</i>	<i>Eldridge Road - Webhnannet Drive - Ocean Avenue</i>	
28	Kittery	Badgers Island	
30	Kittery	Spruce Creek - I-95 - Route 1 Crossings	

Working Group member quote

*“When moving toward prioritizing projects / action, it would be important to **move beyond maps / coarse social indicators to incorporate data that examine priorities relative to values, emotional, cultural, psychological aspects and other factors that shape sense of community, etc. that are not well characterized through economic data. This would mean expanding what might "count" as data, not only quantitative but also qualitative, visual, co-produced data, etc.**”*

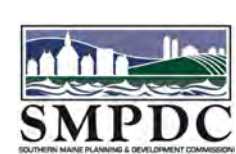
Thank you!

Questions? Thoughts? Feel free to contact us!

Abbie Sherwin (SMPDC) – asherwin@smpdc.org

Jessica Brunacini (Maine Sea Grant) – jessica.brunacini@maine.edu

Chris Feurt (Wells Reserve) – cfeurt@wellsnerr.org



Abbie Sherwin & Julia Maine
Southern Maine Planning and Development Commission



Jessica Brunacini & Kristen Grant

Dani Boudreau & Gwen Shaunassey



Jake Aman, Chris Feurt,
Annie Cox



Example Workshop Activity: Funding Opportunity Scenario

Imagine: We are at the end of the Climate Ready Coast Project. We've developed a regional coastal resilience plan that is ready to be implemented. We learn that the region received funding to implement coastal resilience projects in up to 15 of the vulnerable areas identified in the plan. **If you had to choose 5 areas that you think best represent opportunities for addressing regional needs and priorities, what would they be and why?**