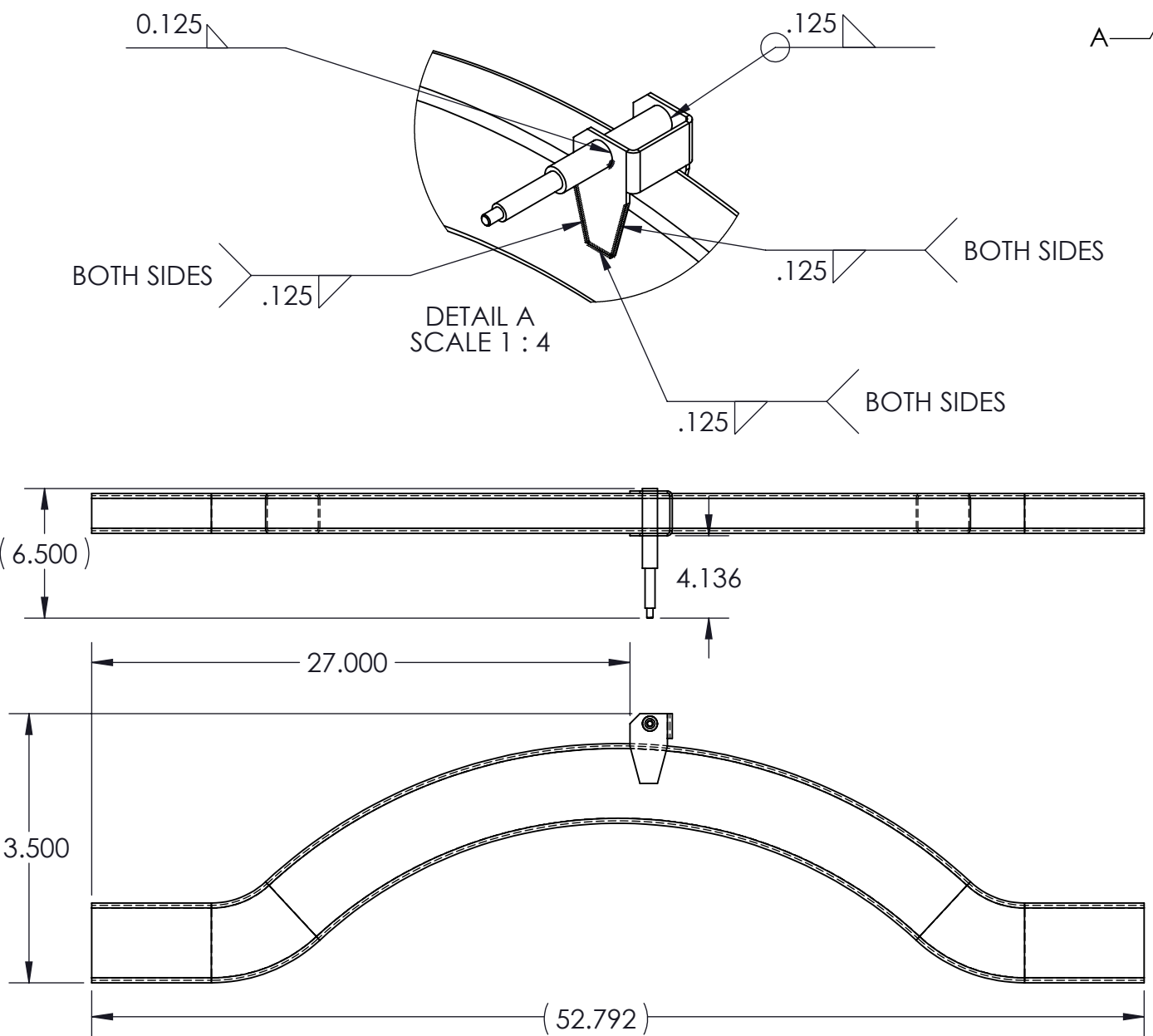


NOTES:

1.) PRIME WITH SHERWIN-WILLIAMS P/N# 12843 AFTER WELDING



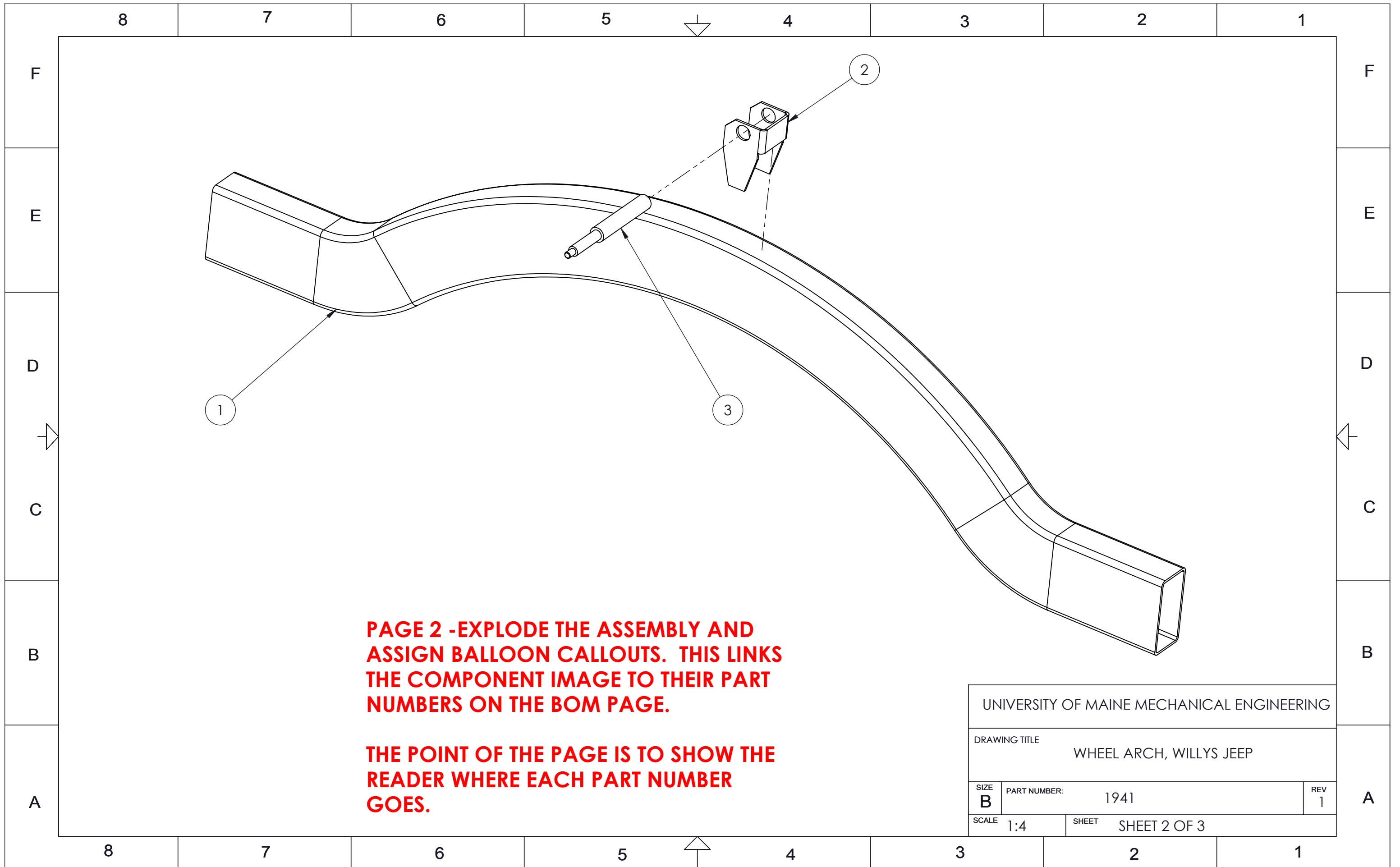
REVISIONS				
ZONE	REV	DESCRIPTION	DATE	APPROVED

**DRAWING REQUIREMENTS:**

- 1.) TEXT SHOULD ALWAYS BE IN CAPITALS.
- 2.) VIEWS MUST ALWAYS BE ALIGNED ACCORDING TO THE "GLASS BOX" RULE.
- 3.) THERE SHOULD NEVER BE TEXT OR GRAPHICS UNDER THE REVISION BLOCK
- 4.) THE TITLE BLOCK SHOULD BE PROPERLY FILLED OUT AS YOU SEE BELOW.
- 5.) FEATURES SHOULD NEVER BE "DOUBLE DIMENSIONED". THERE SHOULD BE JUST ENOUGH DIMENSIONS ON THE PRINT FOR A MACHINIST TO MAKE THE PART.
- 6.) WHENEVER POSSIBLE, DIMENSION FROM A SURFACE THAT A MACHINIST CAN PHYSICALLY CONTACT TO MEASURE FROM.
- 7.) ANY COATINGS OR ANODIZING SHOULD BE CALLED OUT.
- 8.) IF POSSIBLE, CHOOSE DIMENSIONS WHICH CAN BE CHECKED WITH CALIPERS.
- 9.) HOLES SHOULD HAVE CENTERMARKS WHEN VIEWED AXIALLY AND CENTERLINES WHEN VIEWED IN PROFILE.
- 10.) HIDDEN LINES SHOULD BE TURNED ON IN THE ORTHOGRAPHIC VIEWS AND TURNED OFF IN THE ISOMETRIC VIEW.
- 11.) THREADS SHOULD ALWAYS BE REPRESENTED COSMETICALLY, **NEVER EXPLICITLY**

**PAGE 1- LOCATE THE PARTS TO BE WELDED PLUS SHOW THE OVERALL LENGTH, WIDTH, AND HEIGHT. THESE DIMENSIONS MAY NEED TO BE REFERENCE IF THEY ARE NOT CONTROLLED AT THIS ASSEMBLY LEVEL.**

THIRD ANGLE PROJECTION		DRAWN S. ABBADESSA	DATE 6/7/18	UNIVERSITY OF MAINE MECHANICAL ENGINEERING	
		CHECKED	DATE	DRAWING TITLE WHEEL ARCH, WILLYS JEEP	
TOLERANCES UNLESS OTHERWISE SPECIFIED: X.X +/- .030 X.XX +/- .015 X.XXX +/- .005		SIZE <b>B</b>		PART NUMBER: 1941	REV 1
		SCALE 1:8		SHEET SHEET 1 OF 3	



**PAGE 2 -EXPLODE THE ASSEMBLY AND  
ASSIGN BALLOON CALLOUTS. THIS LINKS  
THE COMPONENT IMAGE TO THEIR PART  
NUMBERS ON THE BOM PAGE.**

**THE POINT OF THE PAGE IS TO SHOW THE  
READER WHERE EACH PART NUMBER  
GOES.**

UNIVERSITY OF MAINE MECHANICAL ENGINEERING			
DRAWING TITLE		WHEEL ARCH, WILLYS JEEP	
SIZE <b>B</b>	PART NUMBER:	1941	REV 1
SCALE	1:4	SHEET	SHEET 2 OF 3

ITEM NO.	PART_NUMBER	QTY.	DESCRIPTION	VENDOR	VENDOR_PART_NUMBER
1	106	1	FRAME, JEEP		
2	107	1	BRACKET, SHOCK ABSORBER MOUNT		
3	109	1	SHAFT, SHOCK ABSORBER MOUNT		

**PAGE 3 - PLACE A BILL OF MATERIALS ON THE DRAWING TO INDICATE EVERYTHING REQUIRED TO BUILD THE WELDMENT. HIGH VOLUME, NON-TRACKED CONSUMABLES SUCH AS PAINT CAN BE LEFT OFF. VENDOR AND VENDOR PART NUMBERS ARE REQUIRED FOR EVERYTHING THAT HAS TO BE ORDERED. REMEMBER, YOU WILL NOT BE DOING THE ORDERING. YOU MUST TELL THE PURCHASING DEPARTMENT WHERE TO GET THE PARTS YOU WANT THE ASSEMBLY FLOOR TO USE IN THE BUILD. VENDOR AND VENDOR PART NUMBERS ARE NOT REQUIRED FOR ITEMS MADE "IN HOUSE".**

**THE ITEM NUMBERS CORRESPOND TO THE BALLOONS ON PAGE 2.**

UNIVERSITY OF MAINE MECHANICAL ENGINEERING		
DRAWING TITLE WHEEL ARCH, WILLYS JEEP		
SIZE <b>B</b>	PART NUMBER: 1941	REV 1
SCALE N/A	SHEET 3 OF 3	