

8

7

6

5

4

3

2

1

F

F

E

E

D

D

C

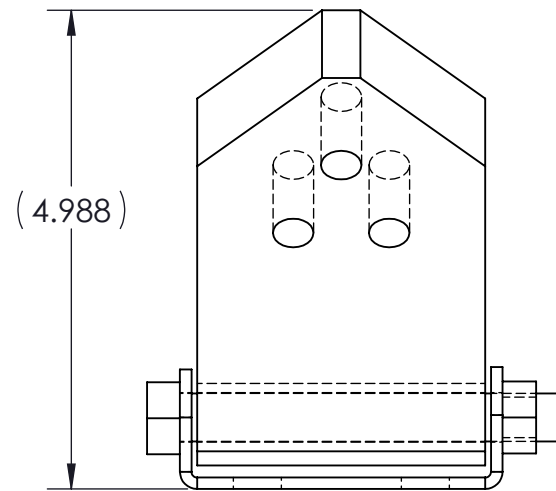
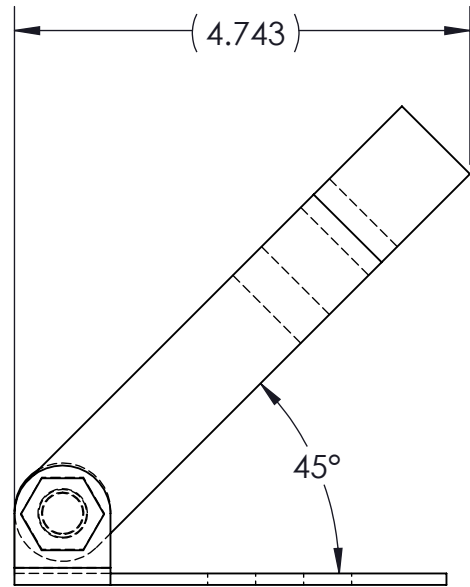
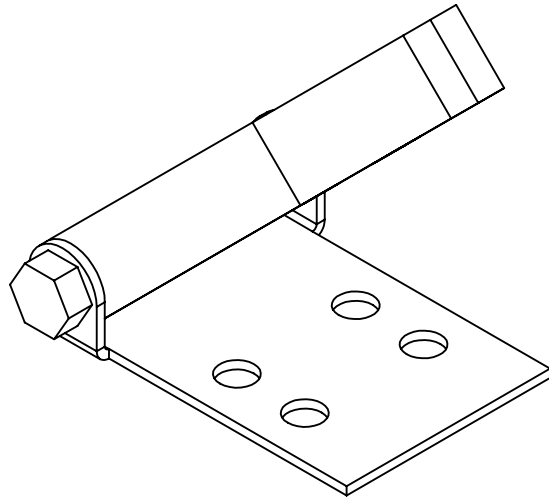
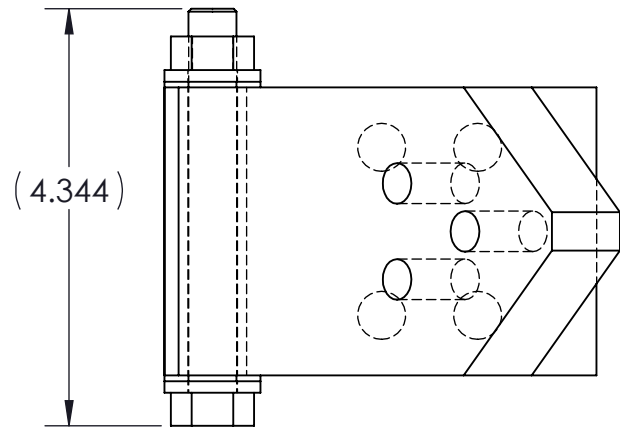
C

B

B

A

A



REVISIONS				
ZONE	REV	DESCRIPTION	DATE	APPROVED

DRAWING REQUIREMENTS:

- 1.) TEXT SHOULD ALWAYS BE IN CAPITALS.
- 2.) VIEWS MUST ALWAYS BE ALIGNED ACCORDING TO THE "GLASS BOX" RULE.
- 3.) THERE SHOULD NEVER BE TEXT OR GRAPHICS UNDER THE REVISION BLOCK
- 4.) THE TITLE BLOCK SHOULD BE PROPERLY FILLED OUT AS YOU SEE BELOW.
- 5.) FEATURES SHOULD NEVER BE "DOUBLE DIMENSIONED". THERE SHOULD BE JUST ENOUGH DIMENSIONS ON THE PRINT FOR A MACHINIST TO MAKE THE PART.
- 6.) WHENEVER POSSIBLE, DIMENSION FROM A SURFACE THAT A MACHINIST CAN PHYSICALLY CONTACT TO MEASURE FROM.
- 9.) ANY COATINGS OR ANODIZING SHOULD BE CALLED OUT.
- 10.) IF POSSIBLE, CHOOSE DIMENSIONS WHICH CAN BE CHECKED WITH CALIPERS.
- 11.) HOLES SHOULD HAVE CENTERMARKS WHEN VIEWED AXIALLY AND CENTERLINES WHEN VIEWED IN PROFILE.
- 12.) HIDDEN LINES SHOULD BE TURNED ON IN THE ORTHOGRAPHIC VIEWS AND TURNED OFF IN THE ISOMETRIC VIEW.

THIRD ANGLE PROJECTION

TOLERANCES UNLESS OTHERWISE SPECIFIED:

X.X	+/- .030
X.XX	+/- .015
X.XXX	+/- .005

DRAWN	S. ABBADESSA	DATE	10/29/17
CHECKED		DATE	

UNIVERSITY OF MAINE MECHANICAL ENGINEERING			
DRAWING TITLE			
ASSY, ACME HINGE PIVOT			
SIZE	PART NUMBER:	REV	
B	100	1	
SCALE	1:2	SHEET	1 OF 3

8

7

6

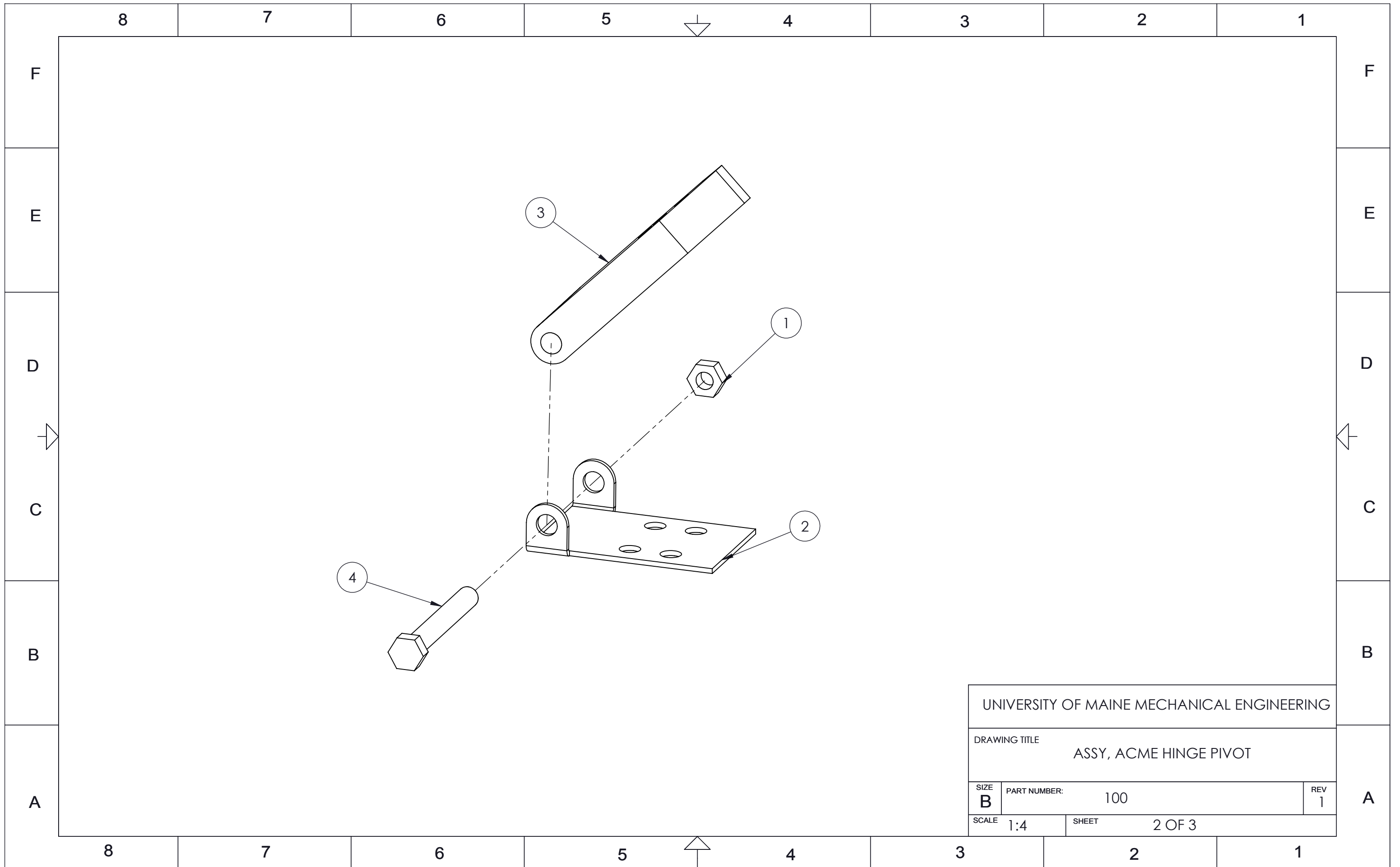
5

4

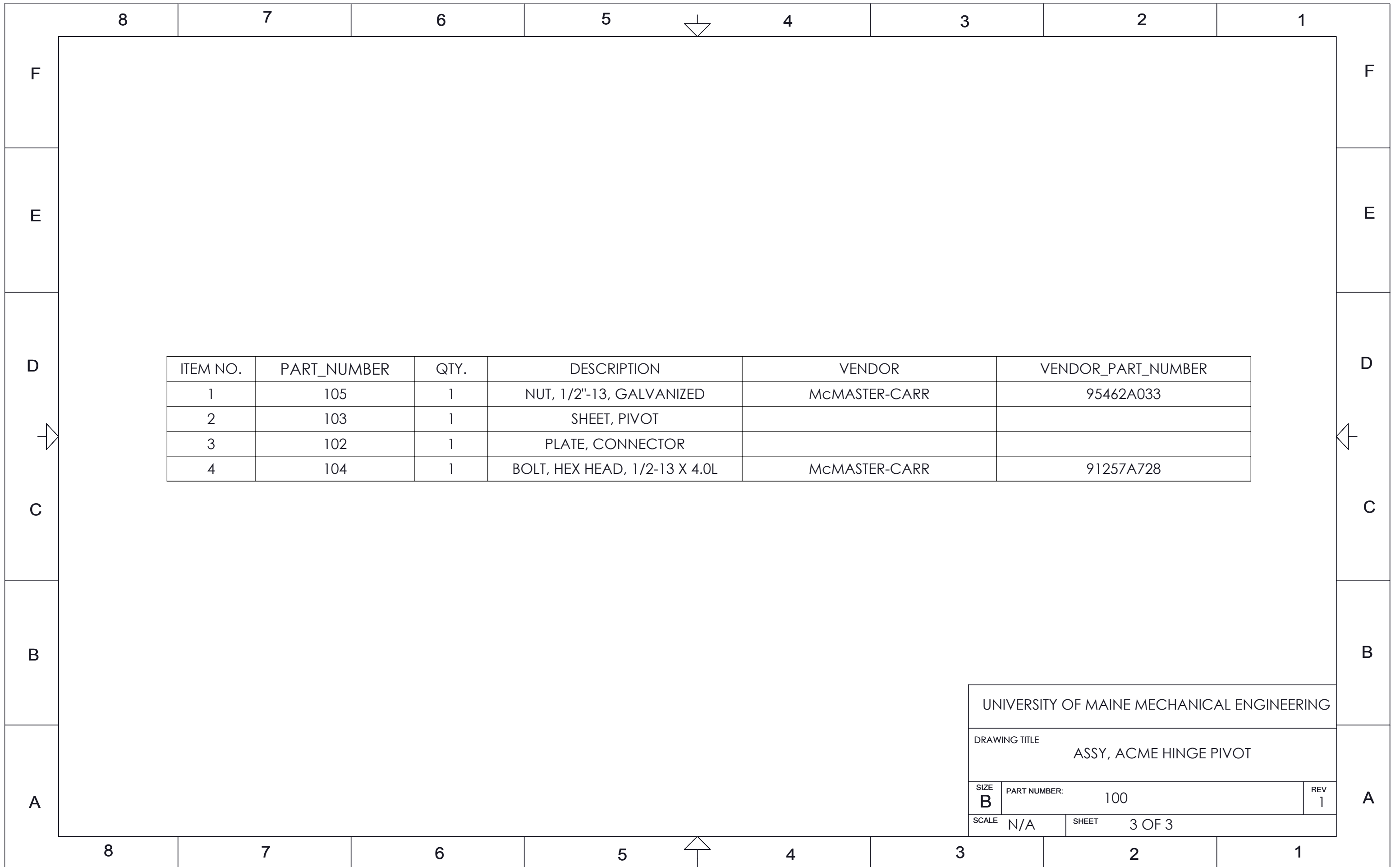
3

2

1



UNIVERSITY OF MAINE MECHANICAL ENGINEERING			
DRAWING TITLE ASSY, ACME HINGE PIVOT			
SIZE B	PART NUMBER: 100	REV 1	
SCALE 1:4	SHEET 2 OF 3		



ITEM NO.	PART_NUMBER	QTY.	DESCRIPTION	VENDOR	VENDOR_PART_NUMBER
1	105	1	NUT, 1/2"-13, GALVANIZED	McMASTER-CARR	95462A033
2	103	1	SHEET, PIVOT		
3	102	1	PLATE, CONNECTOR		
4	104	1	BOLT, HEX HEAD, 1/2-13 X 4.0L	McMASTER-CARR	91257A728

UNIVERSITY OF MAINE MECHANICAL ENGINEERING		
DRAWING TITLE ASSY, ACME HINGE PIVOT		
SIZE B	PART NUMBER: 100	REV 1
SCALE N/A	SHEET 3 OF 3	