



Winter 2007

“News, research updates, and information on lobsters and the lobster industry.”

THE HELENE & FRANK CROHN LOBSTER BULLETIN

Published by the Lobster Institute

“Protecting and conserving the lobster resource, and enhancing lobstering as an industry...and a way of life.”

Helene & Frank Crohn Endow the *Lobster Bulletin*

Helene & Frank Crohn have generously provided a gift to endow the printing of the *Lobster Bulletin*. “The *Lobster Bulletin* has been published since the Lobster Institute’s inception in 1987,” said Dr. Bob Bayer, executive director of the Institute. “Now thanks to Helene & Frank’s support, we can ensure that the *Bulletin* will remain a resource for the lobster industry for many, many years.” According to Bayer, the publication will be renamed the *Helene & Frank Crohn Lobster Bulletin* in recognition of the Crohn’s generosity. The Crohn’s, now retired, reside in Rhinebeck, New York. They have summered in Perry, Maine for many years. After a successful career in insurance, Frank operated the former Eastport Lobster & Fish Company and The Lobster Crate restaurant. Frank was influential in connecting the Lobster Institute with his alma mater, Purdue University, for collaborative research on soy-based lobster bait. ☼

2007 Canadian/U.S. LOBSTERMEN’S TOWN MEETING

The Lobster Institute will host its fourth Canadian/U.S. Lobstermen’s Town Meeting on Friday, April 13 in St. John, New Brunswick. The focus of the 2007 meeting will be on the economics and socio-economic impacts of the lobster fishery. This event brings together lobstermen from Long Island Sound through Newfoundland to talk about their common resource and the industry as a whole. After a brief panel discussion, the event will proceed with its usual “town meeting” format, where lobstermen will be asked to share their thoughts, observations, and theories in a truly regional dialogue. The meeting is again generously sponsored by Darden Restaurants – parent company to Red Lobster, Olive Garden, Smokey Bones, and Bahama Breeze. For more information and registration materials, call Jean Day at the Lobster Institute, at 207-581-1443, or go to the Institute’s Web site at www.lobsterinstitute.org. ☼

A continuing “did you know” series featuring historical highlights of Lobster Institute research and accomplishments.



Twenty Years of Service

Did you know that the Lobster Institute has been serving the lobster industry for twenty years? This year, 2007, marks the twentieth anniversary of the Lobster Institute. Check the “Research Report” on page 2 for highlights of research – and page 4 for a timeline of milestones for our first five years (1987-1991). We will feature five years worth of highlights in each *Lobster Bulletin* throughout the year.

**Check out our fabulous
20th Anniversary Raffle – with 20 great prizes!
Win Red Sox vs. Yankee tickets, gift certificates
valued from \$25 - \$150, and much more!
Details are on our Web site at
www.lobsterinstitute.org. Click on “Institute”.**

The Helene & Frank Crohn Lobster Bulletin
published by the



5763 Rogers Hall, Room #210
The University of Maine, Orono, ME 04469-5763
Phone: 207-581-2751 Fax: 207-581-2744
www.lobsterinstitute.org

A unit of the Maine Agricultural & Forest Experiment Station



A member of the University of Maine System

Cathy Billings, Editor cathy.billings@umit.maine.edu

Made possible through an endowed gift by Helene & Frank Crohn.

2006 Friends of the Lobster Institute

Annual donors and sponsors who generously supported the work of the Lobster Institute in calendar year 2006.

INDUSTRY

****Benefactors \$10,000+****

Darden Restaurants

****Partners \$5,000 - \$9,999****

Riverdale Mills - James M. Knott, Sr.

****Supporters \$1,000 - \$4,999****

Farm Credit of Maine, ACA
Maine Import Export Lobster Dealers Assn.
Maine Lobster Pound Assn.
Mass Lobstermen's Assn.
Southern Maine Lobstermen's Assn.
Union Trust Company



****Associates \$500 - \$999****

DiMillo's Floating Restaurant
Maine Salt Co.
Smithwick & Mariners Insurance

****Friends \$100 - \$499****

Atlantic Offshore Lobstermen's Assn.
Barnacle Billy's Inc.
Bell Power Systems, Inc.
Bruce W. Fernald Inc.
Bruce Heanssler Lobster Co.
City Fish Market
Colwell Brothers Inc.
Conary Cove Lobster Co.
CT Commercial Lobstermen's Assn.
Cranberry Isles Fishermen's co-op
Downeast Lobstermen's Assn.
East Coast Seafood
Eastern Fishermen's Federation
Fishermen's Market Intl.
Frank & Brina Sands Foundation
Grand Manan Fishermen's Assn.
Hamilton Marine
Jesse's Marine, LLC
Lobster Products, Inc.
Logtek - Paul Fitzgerald
Maine Lobster Promotion Council
Maine Lobstermen's Assn.
Marcella Brothers Inc.
New Harbor Co-op
Palombo Fish Corp
Plante's Lobster Escape Vents
R.B. Allen Associates - Richard Allen
Seaview Lobster Co
Sorrento Lobster & Fish
South Bristol Fisherman's Co-op
South Shore Lobster Fishermen's Assn.
Spruce Head Fishermen's Co-op

Swan's Island Fisherman's Co-op
Trenton Bridge Lobster Pound
Warren's Lobster House
William Atwood Lobster Co.

****Others****

Aquatecnics, LLC/ Coquille Catering
Atlantic Lobster Systems
D.J. King Lobster Co.
E. Cutler Co.
Fundy Lobster
J & J Lobster
Sea View Lobster Corp.

INDIVIDUALS

**** "Blue Lobster" League \$10,000+****

--

****Blackmore Federation \$5,000 - \$9,999****

--

****Highliner Club \$1,000 - \$4,999****

George Williams

****Heritage Guild \$500 - \$999****

Cathy Billings
James Halkett
Jack Merrill



****Shoal Society \$100 - \$499****

H Craig Avery
Robert Bayer
Ed & Mary Blackmore
Susan Bruce
Sarah E. Cogan
Frank & Helene Crohn
Carolyn Eason
Frank Fassett
Paul & Paula Graller
Judy & Rodney Hanscom
John Heyer
Herbert & Pat Hodgkins
Jim & Sherrie Kite
Roland & Sharyn Leach
Alvin McNeilly
Dr. Ray Nichols
John & Coreen Nocolai
John & Gail Reeves
Lori Wilson Richter

David Sullivan
Paul Ward

****Associates \$50 - \$99****

Tom & Linda Archambault
John & Margaret Bennett
Lorie & Scott Dorrance
A. Michael Faulkingham (Georgette Corp.)
Stephen & Joanne Greer
Arthur Glowka
Samuel Hill
Mary & Tom Kemper
Woodbury & Judy Post
David Riddle
James Roberts
Dr. Sandra Shumway
John & Marian White
T. Wister Brown

****Friends \$25 - \$49****

Renee Allen
Robert & Alice Cantrall
Harry Carpenter
A.D. Freedland
Deirdre Grammas
Robert & Alice Hawes
David & Betty Heanssler
Michael Hogan
Roger Lee
John & Patricia Marsh
Caroline Mechem
Virginia & Kevin Moody
John E. Sylvester, Jr.
Tyler H. Thompson
Jonathan & Wendy Townsend
David & Roberta Townsend
James Tweedie
Thomas Yazwinski

****Others****

Thomas Boerger
Patricia Cyphers
Leslie Peterson



GRANTMAKERS

Maine Marine Research Fund
Northeast Consortium

If we inadvertently left someone off this list, or printed any name incorrectly, we apologize. Please notify us so that we may post a correction.

*We sincerely thank the over 125 annual donors
- businesses, foundations and individuals -
as well as grantmakers and sponsors
who supported the work of the Lobster Institute
in calendar year 2006.
We look forward to your continued support in 2007.*

Check out the Lobster Institute website
at www.lobsterinstitute.org,
providing the definitive site for lobster
information with nearly 200 links.





Contact us at 207-581-2751 if you would like to sponsor our "Research Report" and see your logo here!

RESEARCH REPORT

Readers may contact the Lobster Institute for more detailed information on any of these projects.

❖ AVC Lobster Science Centre Isolates

Antimicrobial Peptides from Lobster Blood --
(derived from an article by Dr. Andrea Battison in the AVC Lobster Science Centre's TIDINGS, Vol, 2, Issue 1)

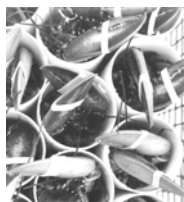
The Atlantic Veterinary College's Lobster Science Center in Prince Edward Island has begun to establish normal values for some parameters in lobster blood that may be useful as health indicators. This information can be used by researchers in their studies of how lobsters respond to diseases, and any associated treatments for disease. Lobster antibiotics (called antimicrobial peptides) have been isolated from lobster blood. These peptides help lobsters fight off infections. According to the AVC, "increasing our understanding of these peptides helps us understand "how" the lobster fights infections either in the wild or in long-term holdings." (View the full article & issue of TIDINGS at www.LobsterScience.ca/Articles/Tidings/Tidings200701.htm.)

❖ Lobster Health Monitoring Project Initiated --

The Lobster Institute, working jointly with the Maine Aquatic Animal Health Laboratory at the University of Maine, has begun a lobster health monitoring project (conducted by David Basti, DVM

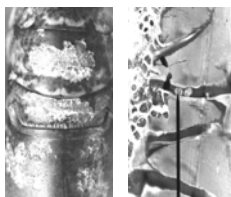
and Deborah Bouchard). Newly caught lobsters from five different geographic locations in Maine are being sampled. The lobsters are being evaluated for vigor, shell hardness, sex, and any observable shell disease. Hemolymph was aseptically collected from sixty lobsters from each location, including any fresh mortalities. The hemolymph was then plated on TSA with 5%SRBC and 1.5%NaCl, and observed under 40X light microscopy for parasites. (a portion of the hemolymph is being retained and stored at -20°C). After incubation for 5 days at 16°C growth was evaluated. The most predominant colony type from each sample exhibiting growth was identified using standard biochemical testing and API systems, and recorded in a spreadsheet. Preliminary results from a first round of testing indicate: no parasites or shell disease observed, no *Aerococcus viridans* (causative agent of gaffkemia) isolated, and the overall bacterial isolation was low. *Photobacterium indicum* (the organism associated with weak lobster syndrome) was isolated in high numbers from 99% of mortalities tested. *Photobacterium indicum* was the predominant isolate present in all pounds in the 3 to 6 % prevalence range. A full summary of this project will appear in a future *Lobster Bulletin*. ☼

Celebrating the Lobster Institute's 20th Anniversary Research Highlights in the First Five Years: 1987-1991



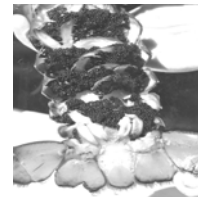
1987

Conducted lobster band strength studies.



1988

Began research on lobster shell disease.



1989

Helped MLA determine the efficacy of Maine's v-notch.



1990

Alternative bait studies were begun.



1991

Researched the survival of hatchery raised lobsters.



LOBSTER INSTITUTE

Lobster Bulletin, Winter 2007

The Lobster Institute Celebrates Its 20th Anniversary: 1987 – 2007

Milestones through the First Five Years

1985 – the concept of an institute devoted to lobster research is first conceived by Maine's leading lobster industry organizations: the Maine Lobstermen's Association (MLA), the Maine Lobster Pound Association (MLPA), and the Maine Import/Export Lobster Dealers Association (MIELDA). The idea is presented to the University of Maine (UM).

1986 – Organizational efforts begin, with the first official meeting held at the offices of the Maine Lobstermen's Association (then in Nobleboro, Maine) on January 6, 1986. Key leaders present were Dr. David Dow (UM) (elected as chair of the organizational meeting), Edward Blackmore (MLA), Robert Brown (MIELDA), Herbert Hodgkins (MLPA), and Joseph Vachon (MLA). It was agreed that *"The Maine Lobster Institute be established to conduct research and provide information to protect, conserve and enhance the Maine lobster resource and its environment in order to ensure the continuance of a viable lobster industry that will benefit Maine people."*

1987

- ❖ On July 27, by a vote of the University of Maine System Board of Trustees, the Maine Lobster Institute is formed, with Dr. David J. Dow named as the first director.
- ❖ Edward Blackmore is voted in as the first Chairman of the Lobster Institute Board of Advisors.
- ❖ The first *Lobster Bulletin* is published in November.

1988

- ❖ The Lobster Institute conducts its first research on lobster shell disease.
- ❖ The first Lobster Dealers & Pound Operators Workshop is organized by the Lobster Institute, in conjunction with the Maine Lobster Pound Association and the Maine Import/Export Lobster Dealers Association.

1989

- ❖ It was agreed by the Board of Directors that the word "Maine" be dropped from the name of the Institute, making it simply the "Lobster Institute". It was determined this title more clearly reflected the regional nature of the Institute, covering the northeastern coastal states in the U.S. and the Canadian Maritime Provinces.
- ❖ *Lobsters Inside-Out* is published, an easy to read workbook with basic information about lobsters and lobster fishing.

1990

- ❖ Studies on alternative lobster baits are initiated.
- ❖ *A Lobster in Every Pot* is published, the Lobster Institute's book of recipes and lobster lore.

1991

- ❖ The Institute plays a major role in creating the Maine Lobster Promotion Council.

This is the first in a series of four articles celebrating the Institute's twenty years of service to the lobster industry. Look for five year's worth of highlights in each of our next three issues in 2007, as well as profiles of and quotes from key Lobster Institute leaders over the years.