

Damariscotta River Estuary Community Science Project: 2019-2025

Community Science Project Timeline

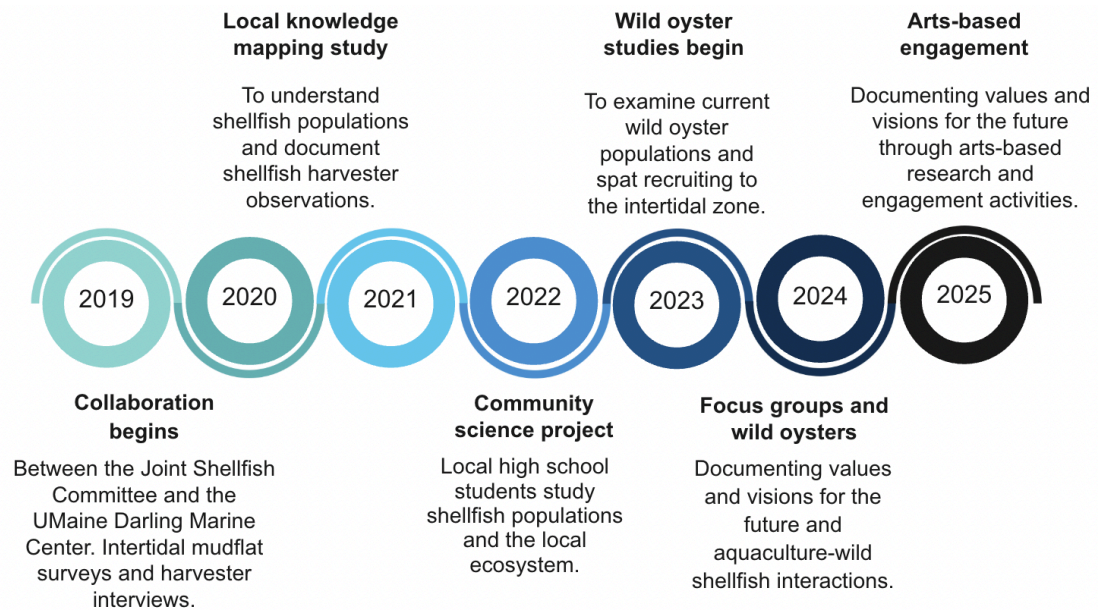


Figure 1: Timeline of community science project activities. For more information about the project and its history, please visit: <https://tinyurl.com/DREcomsci>

Research Sites

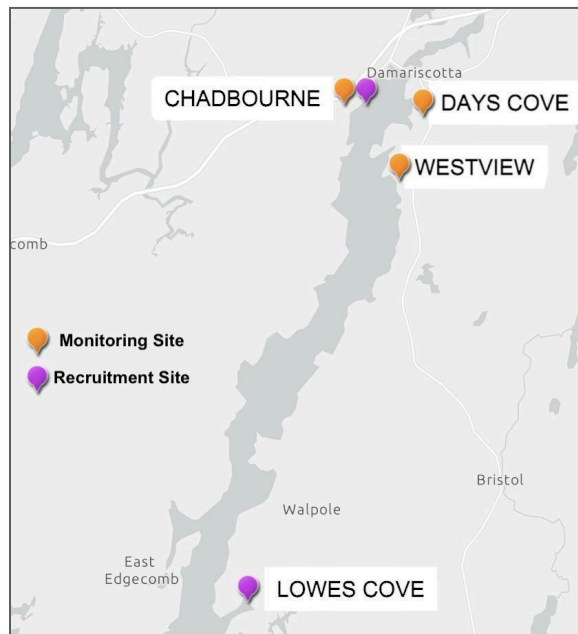


Figure 2: Map showing the project's long term monitoring sites and soft-shell clam recruitment sites.

Example Takeaways

Soft-Shell Clam Abundance Declined from 2019-2022

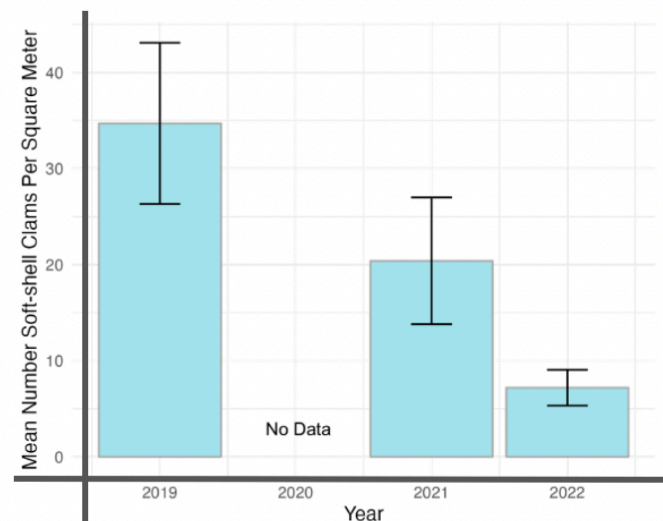


Figure 3: Monitoring data indicate that clam numbers have declined since 2019. Quahog and wild oyster numbers have also decreased.

Community Science Activities & Student Engagement

Shellfish Ecological Surveys



Soft-shell Clam Recruitment Boxes



Green Crab Surveys



Harvester Knowledge Surveys

1. In what town(s) do you hold a shellfish license? (check all that apply)
 - a. Damariscotta-Newcastle
 - b. Edgecomb
 - c. Bristol
 - d. South Bristol
 - e. Boothbay
 - f. East Boothbay
 - g. Other: _____
2. How many years have you been harvesting on the river?
 - a. 0-5
 - b. 6-15
 - c. 16-25
 - d. 26-35
 - e. 35+
3. On average, how often do you harvest each week?
 - a. 1-2 days per week
 - b. 3-4 days per week

Figure 4: Student researchers supported a number of community science program activities, ranging from field surveys to local knowledge surveys with shellfish harvesters.

Places to Learn More

Damariscotta River Community Science Project Handbook: <https://shorturl.at/RBVbl>

Shellfish Focus Day at the Maine Fishermen's Forum: <https://themudflat.org/shellfish-focus-day/>

The Mudflat for example co-management projects: <https://themudflat.org/>

Sea Grant Shellfish Handbook: <https://shorturl.at/ZDz3c>

Casco Bay Regional Shellfish Working Group: <https://shorturl.at/1YdQr>



To learn more contact:

Heather Leslie (heather.leslie@maine.edu) & Sarah Risley (sarah.risley1@maine.edu)

Spring 2025