

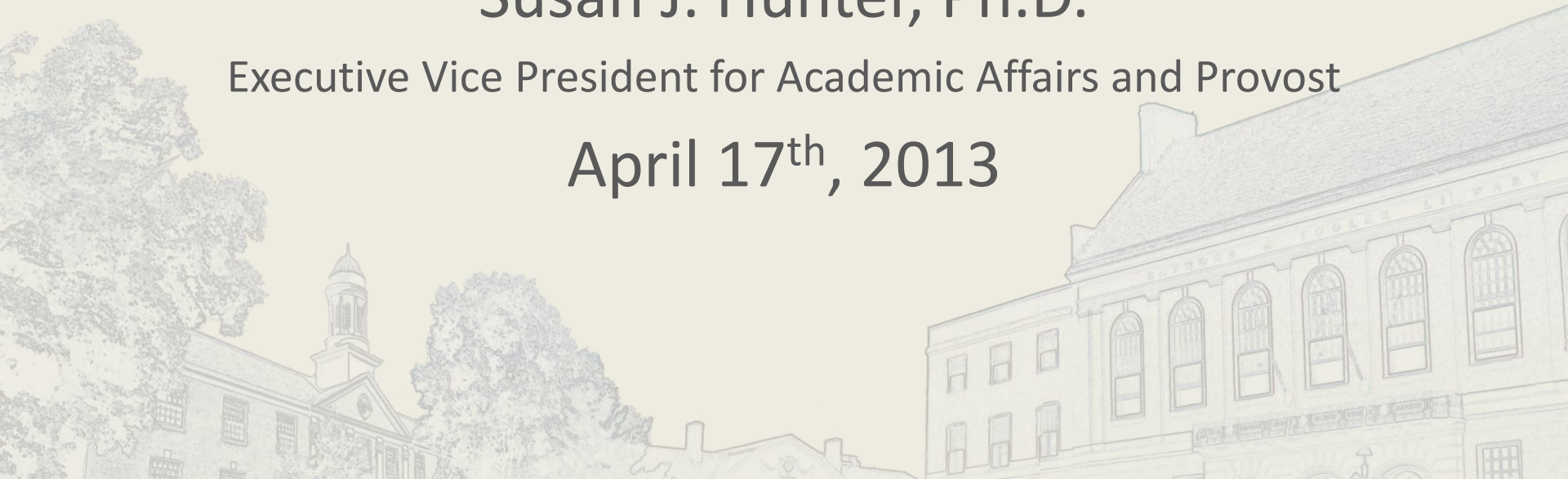


PRESENTATION TO MEMBERS ONLY FACULTY SENATE MEETING

Susan J. Hunter, Ph.D.

Executive Vice President for Academic Affairs and Provost

April 17th, 2013





Tenured/Tenure-eligible (T/TE) Faculty at UMaine

		full-time T/TE								part-time T/TE	total T/TE faculty
Age	< 30	30-39	40-49	50-54	55-59	60-64	65+	total full-time T/TE			
UMaine	2008-2009	5	58	97	72	105	68	41	446	16	462
	2009-2010	2	52	94	60	103	76	47	434	16	450
	2010-2011	1	44	97	57	97	81	48	425	10	435
	2011-2012	2	48	92	52	74	88	54	410	19	429
BPPH	2008-2009	2	3	1	3	7	4	1	21	0	21
	2009-2010	2	3	2	1	8	5	1	22	0	22
	2010-2011	1	2	4	0	6	7	1	21	0	21
	2011-2012	1	3	3	0	4	5	2	18	0	18
EHD	2008-2009		1	9	5	11	7	1	34	0	34
	2009-2010		2	9	3	7	8	3	32	0	32
	2010-2011		1	8	3	5	8	2	27	1	28
	2011-2012		3	7	2	4	8	2	26	1	27
ENGR	2008-2009	1	10	20	12	7	3	5	58	3	61
	2009-2010		12	16	12	10	4	5	59	3	62
	2010-2011		8	18	11	12	4	5	58	1	59
	2011-2012	1	6	18	10	12	7	5	59	1	60
LAS	2008-2009	1	26	36	28	40	27	26	184	7	191
	2009-2010		19	35	24	40	29	27	174	10	184
	2010-2011		17	35	21	40	30	27	170	6	176
	2011-2012		17	32	20	29	36	29	163	10	173
NSFA	2008-2009	1	18	33	24	40	26	9	151	6	157
	2009-2010		16	34	20	38	29	12	149	3	152
	2010-2011		16	33	22	34	31	14	150	2	152
	2011-2012		19	32	20	24	32	15	142	8	150



UMaine Faculty Headcounts and Courses Taught

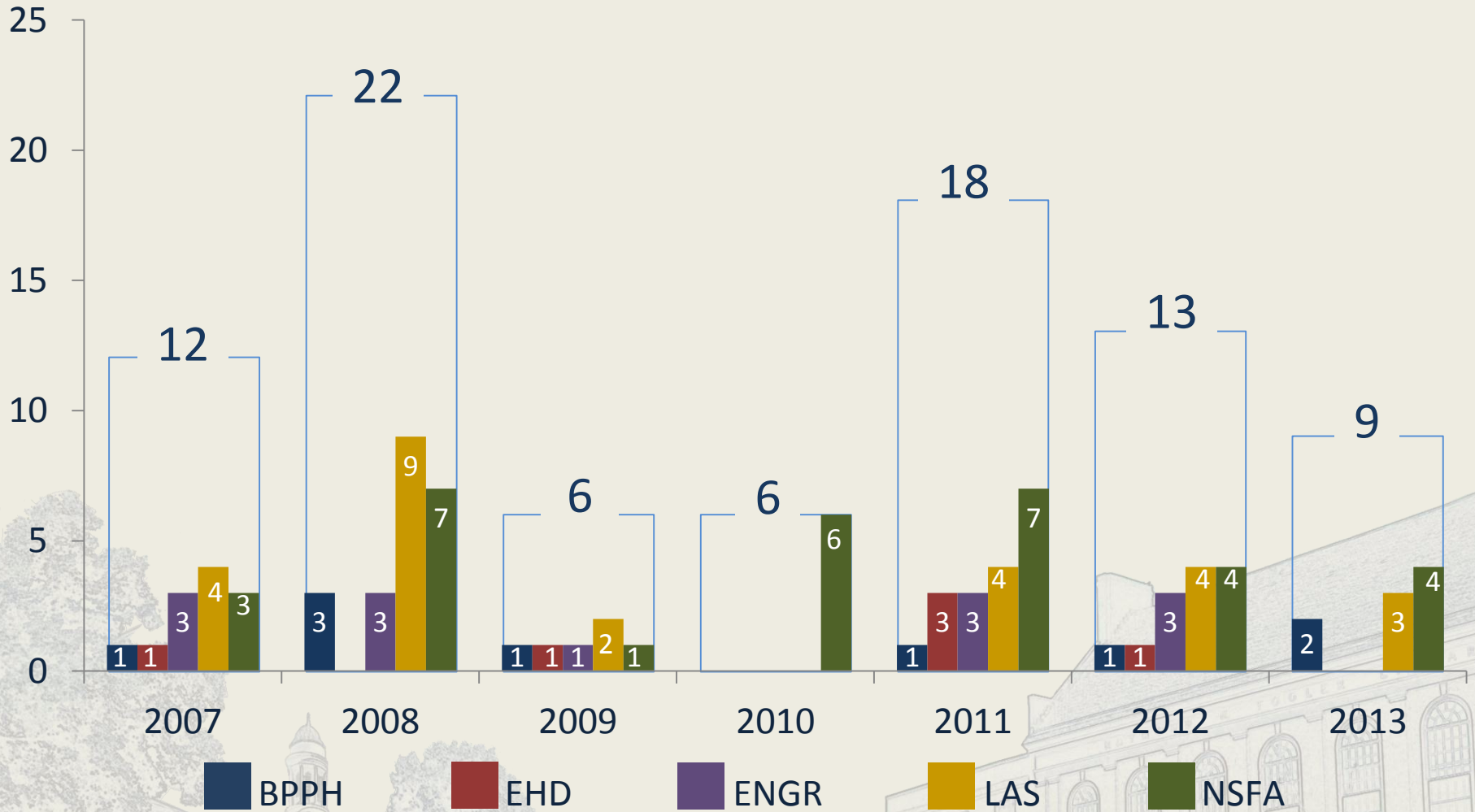
UMaine-wide (six colleges and DLL)

		2008-2009	2009-2010	2010-2011	2011-2012
fall undergraduate headcount		9,667	9,484	9,183	8,911
fall graduate headcount		2,151	2,383	2,318	2,257
Total Headcount		11,818	11,867	11,501	11,168
full-time tenured/tenure-eligible (T/TE) faculty, by age	< 30	5	2	1	2
	30-39	53	48	41	45
	40-49	90	86	88	82
	50-54	70	60	55	51
	55-59	101	97	92	70
	60-64	66	74	79	87
	65+	39	45	47	51
	Total	424	412	403	388
number of courses taught by full-time T/TE faculty	All courses			2,399	2,338
	Type 1	1,505	1,517	1,508	1,419
	Type 2			891	919
number of "part-time" T/TE faculty		37	37	30	38
number of courses taught by "part-time" T/TE faculty	All courses			116	132
	Type 1	76	75	71	81
	Type 2			45	51
number of full-time non-T/TE faculty		76	71	78	90
number of part-time non-T/TE faculty		334	327	311	330
total non-T/TE faculty		410	398	389	420
number of courses taught by non-T/TE faculty	All courses			1,398	1,511
	Type 1	1,217	1,176	1,153	1,213
	Type 2			245	297



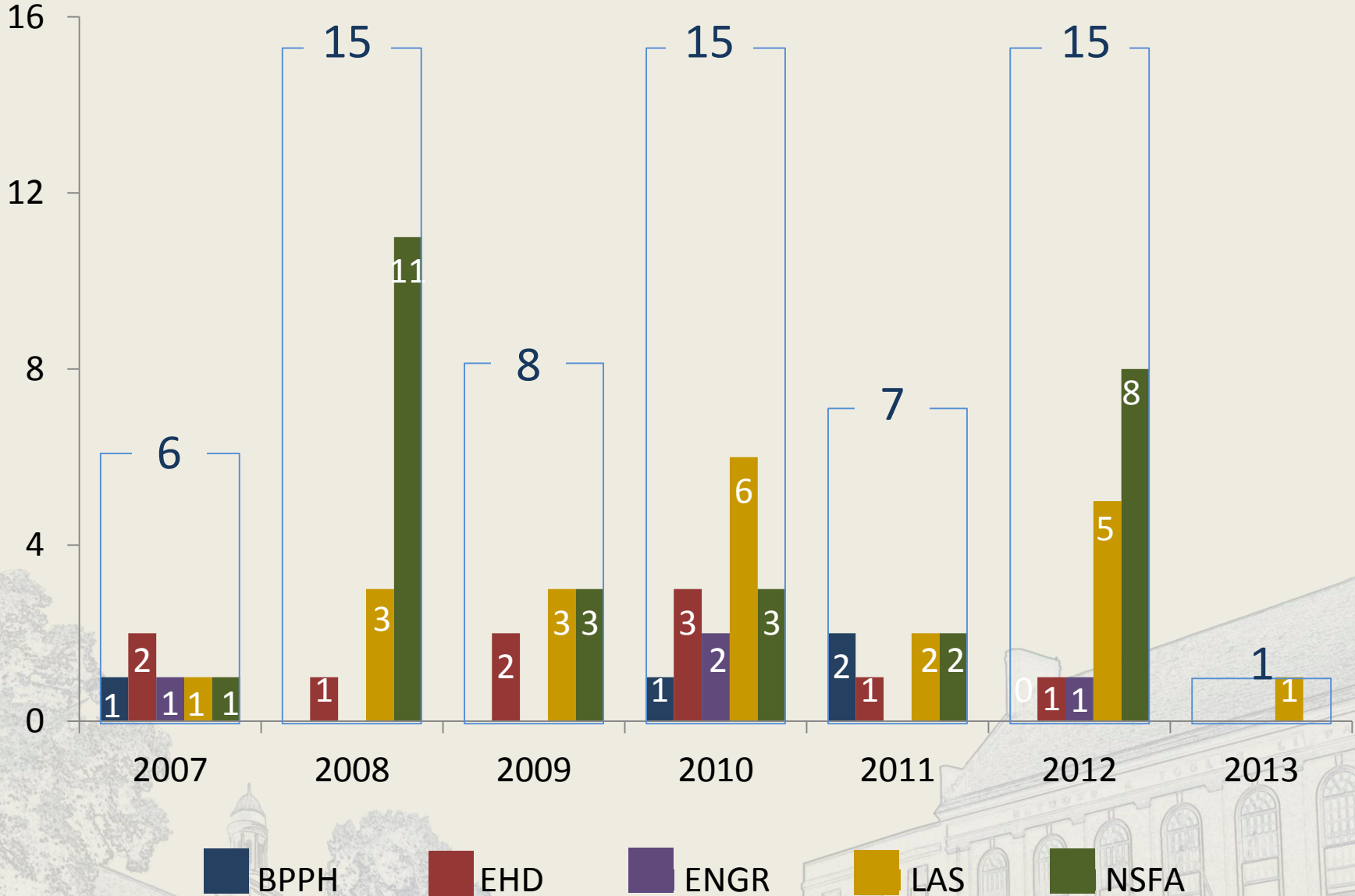
Tenure and Tenure-Track Professors hired since 2007

(replacement and new)



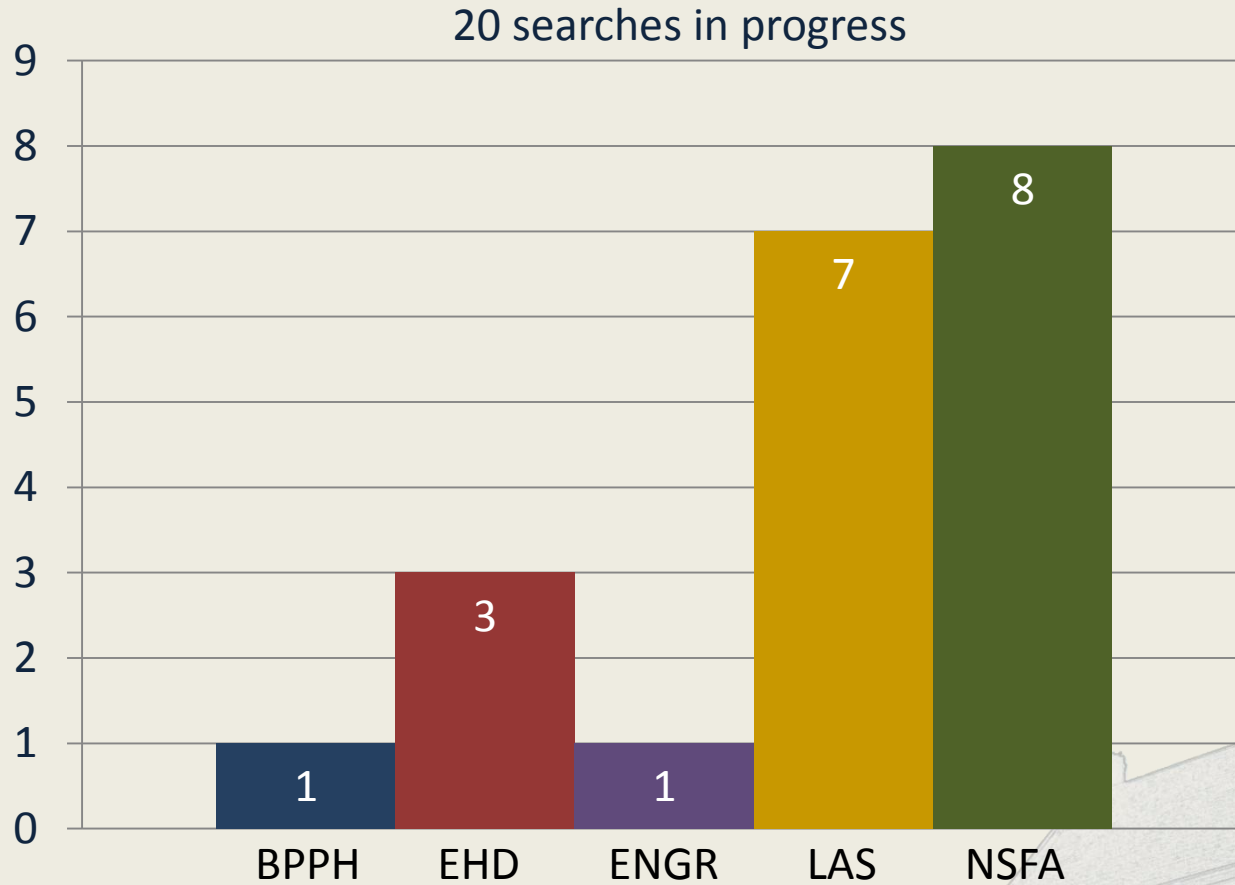


Tenured Faculty Retirements since 2007





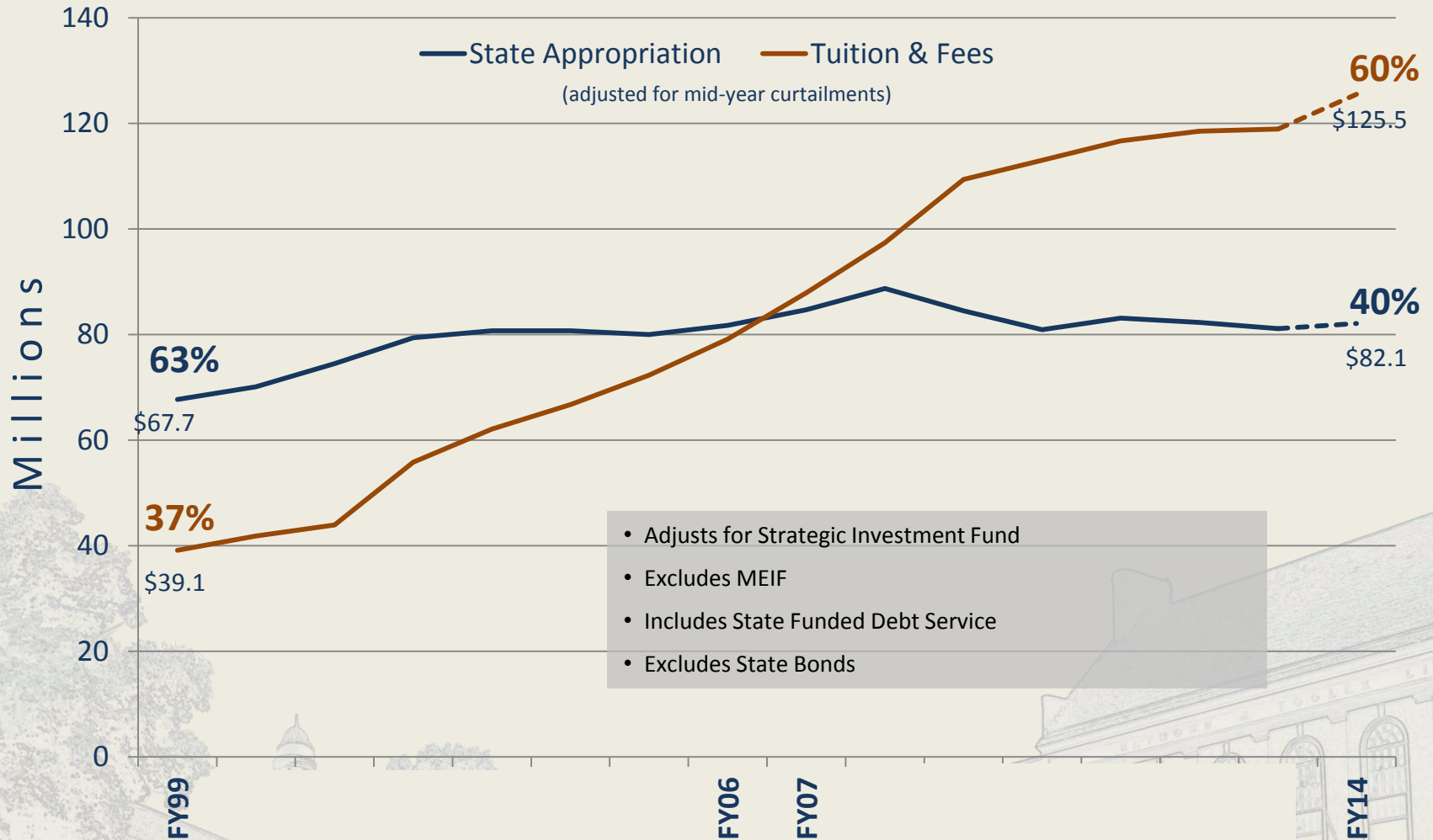
Current Active Searches for Tenure-Track Faculty



9 tenure rack positions have been hired since 2013



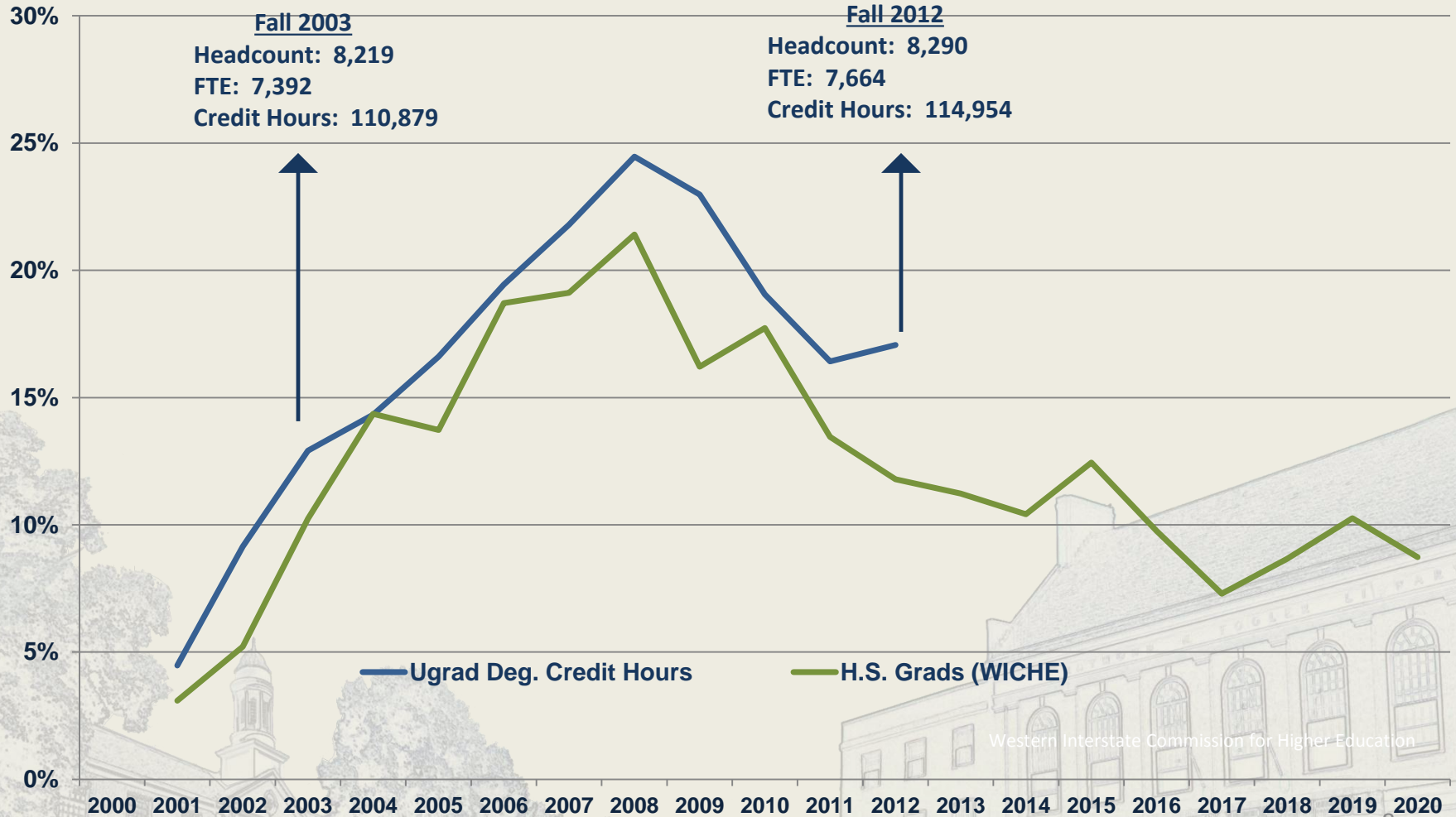
SHIFTING DEPENDENCE FROM STATE APPROPRIATION





UMAINE ENROLLMENT CHANGES

UMaine Undergraduate Degree-Seeking Enrollment and Projected Maine High School Graduates (2000–2020)





UMaine Faculty Headcounts and Courses Taught

College of Business, Public Policy & Health

		2008-2009	2009-2010	2010-2011	2011-2012
fall undergraduate headcount		926	841	761	694
fall graduate headcount		97	98	104	85
total headcount		1,023	939	865	779
full-time tenured/tenure-eligible (T/TE) faculty, by age	< 30	2	2	1	1
	30-39	3	3	2	3
	40-49	1	2	4	3
	50-54	3	1	0	0
	55-59	7	8	6	4
	60-64	4	5	7	5
	65+	1	1	1	2
	Total	21	22	21	18
number of course sections taught by full-time T/TE faculty	All courses			102	84
	Type 1	84	93	90	75
	Type 2			12	9
number of "part-time" T/TE faculty		0	0	0	0
number of courses taught by "part-time" T/TE faculty	All courses			0	0
	Type 1	0	0	0	0
	Type 2			0	0
number of full-time non-T/TE faculty		8	7	6	6
number of part-time non-T/TE faculty		9	7	10	8
number of part-time DLL faculty teaching BPPH courses		3	1	3	1
total non-T/TE faculty		20	15	19	15
number of courses taught by non-T/TE faculty	All courses			62	57
	Type 1	76	65	61	57
	Type 2			1	0



UMaine Faculty Headcounts and Courses Taught

College of Education & Human Development

		2008-2009	2009-2010	2010-2011	2011-2012
fall undergraduate headcount		972	1,032	1,030	964
fall graduate headcount		973	1,150	1,052	1,002
total headcount		1,945	2,182	2,082	1,966
full-time tenured/tenure-eligible (T/TE) faculty, by age	< 30	0	0	0	0
	30-39	1	2	1	3
	40-49	8	8	7	6
	50-54	5	3	3	2
	55-59	11	7	5	4
	60-64	7	8	8	8
	65+	1	3	2	2
Total		33	31	26	25
number of course sections taught by full-time T/TE faculty	All courses			239	236
	Type 1	139	134	122	119
	Type 2			117	117
number of "part-time" T/TE faculty		1	1	2	2
number of courses taught by "part-time" T/TE faculty	All courses			0	7
	Type 1	0	0	0	0
	Type 2			0	7
number of full-time non-T/TE faculty		11	9	14	12
number of part-time non-T/TE faculty		63	69	54	72
number of part-time DLL faculty teaching EHD courses		17	13	12	7
total non-T/TE faculty		91	91	80	91
number of courses taught by non-T/TE faculty	All courses			222	252
	Type 1	184	201	172	185
	Type 2			50	67



UMaine Faculty Headcounts and Courses Taught

College of Engineering

		2008-2009	2009-2010	2010-2011	2011-2012
fall undergraduate headcount		1,375	1,450	1,518	1,536
fall graduate headcount		117	141	135	145
total headcount		1,492	1,591	1,653	1,681
full-time tenured/tenure-eligible (T/TE) faculty, by age	< 30	1	0	0	1
	30-39	10	12	8	6
	40-49	20	16	18	18
	50-54	11	12	11	10
	55-59	7	9	11	12
	60-64	3	4	4	7
	65+	5	5	5	5
	Total	57	58	57	59
number of course sections taught by full-time T/TE faculty	All courses			403	432
	Type 1	277	291	304	310
	Type 2			100	122
number of "part-time" T/TE faculty		4	4	2	1
number of courses taught by "part-time" T/TE faculty	All courses			11	2
	Type 1	12	8	9	2
	Type 2			2	0
number of full-time non-T/TE faculty		3	3	2	5
number of part-time non-T/TE faculty		7	5	10	9
number of part-time DLL faculty teaching ENGR courses		3	1	3	1
total non-T/TE faculty		13	9	15	15
number of courses taught by non-T/TE faculty	All courses			55	73
	Type 1	56	58	52	63
	Type 2			3	10



UMaine Faculty Headcounts and Courses Taught

College of Liberal Arts & Sciences

		2008-2009	2009-2010	2010-2011	2011-2012
fall undergraduate headcount		2,682	2,676	2,579	2,529
fall graduate headcount		316	340	361	357
total headcount		2,998	3,016	2,940	2,886
full-time tenured/tenure-eligible (T/TE) faculty, by age	< 30	1	0	0	0
	30-39	24	17	15	14
	40-49	31	30	31	29
	50-54	28	24	20	20
	55-59	38	38	39	28
	60-64	27	29	30	36
	65+	25	26	26	29
	Total	174	164	161	156
number of course sections taught by full-time T/TE faculty	All courses			966	937
	Type 1	638	630	595	539
	Type 2			371	398
number of "part-time" T/TE faculty		17	20	15	17
number of courses taught by "part-time" T/TE faculty	All courses			58	60
	Type 1	33	43	37	41
	Type 2			22	20
number of full-time non-T/TE faculty		19	18	19	21
number of part-time non-T/TE faculty		84	77	82	114
number of part-time DLL faculty teaching LAS courses		60	61	60	31
total non-T/TE faculty		163	156	161	166
number of courses taught by non-T/TE faculty	All courses			670	724
	Type 1	595	569	576	610
	Type 2			94	115



UMaine Faculty Headcounts and Courses Taught

College of Natural Sciences, Forestry & Agriculture

		2008-2009	2009-2010	2010-2011	2011-2012
fall undergraduate headcount		2,340	2,337	2,294	2,245
fall graduate headcount		511	550	563	566
total headcount		2,851	2,887	2,857	2,811
full-time tenured/tenure-eligible (T/TE) faculty, by age	< 30	1	0	0	0
	30-39	15	14	15	19
	40-49	27	28	26	25
	50-54	23	20	21	19
	55-59	38	35	31	22
	60-64	25	28	30	31
	65+	6	9	12	13
	Total	135	134	135	129
number of course sections taught by full-time T/TE faculty	All courses			675	642
	Type 1	359	363	387	374
	Type 2			288	268
number of "part-time" T/TE faculty		22	18	17	21
number of courses taught by "part-time" T/TE faculty	All courses			61	70
	Type 1	38	30	36	41
	Type 2			24	28
number of full-time non-T/TE faculty		28	29	32	36
number of part-time non-T/TE faculty		64	52	45	64
number of part-time DLL faculty teaching NSFA courses		13	21	21	19
total non-T/TE faculty		105	102	98	119
number of courses taught by non-T/TE faculty	All courses			292	310
	Type 1	213	194	199	212
	Type 2			93	98



UMaine Faculty Headcounts and Courses Taught

Honors College

		2008-2009	2009-2010	2010-2011	2011-2012
full-time tenured/tenure-eligible (T/TE) faculty, by age	< 30	0	0	0	0
	30-39	0	0	0	0
	40-49	0	0	0	0
	50-54	0	0	0	0
	55-59	0	0	0	0
	60-64	0	0	0	0
	65+	0	0	0	0
	Total	0	0	0	0
number of course sections taught by full-time T/TE faculty	All courses			0	0
	Type 1	0	0	0	0
	Type 2			0	0
number of "part-time" T/TE faculty		1	0	0	0
number of courses taught by "part-time" T/TE faculty	All courses			0	0
	Type 1	0	0	0	0
	Type 2			0	0
number of full-time non-T/TE faculty		2	2	2	2
number of part-time non-T/TE faculty		14	12	6	12
number of part-time DLL faculty teaching Honors courses		0	1	1	0
total non-T/TE faculty		16	15	9	14
number of courses taught by non-T/TE faculty	All courses			46	57
	Type 1	56	49	45	52
	Type 2			1	5