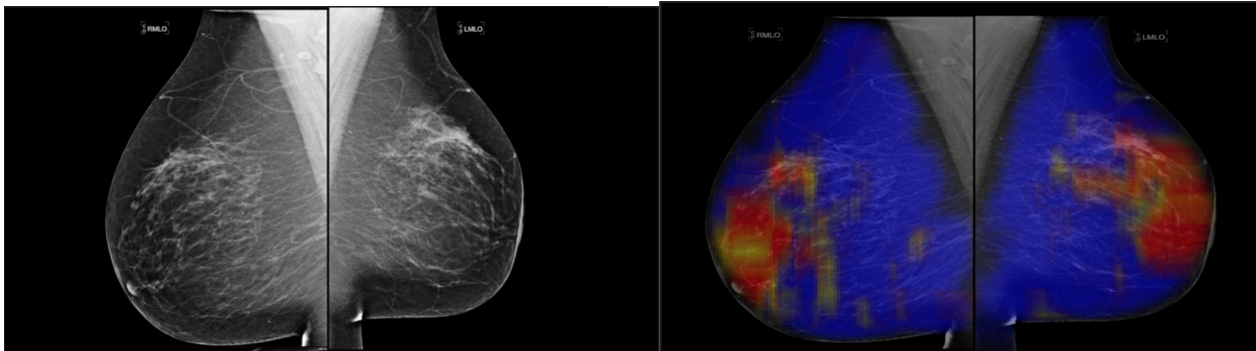


## CompuMAINE Lab Internships 2022-2023

The **CompuMAINE Lab** (**Computational Modeling, Analysis of Images and Numerical Experiments**) is looking for student researchers for computational projects in biomedicine. Our interdisciplinary team is seeking applicants with interests in signal processing, image analysis, database management and statistics. Applicants are expected to be committed to learning necessary skills. Typical CompuMAINE internships are unpaid. However, for more qualified / experienced students, some funds may be available for a subset of student interns. Please submit your application via our online [form: https://umaine.edu/compumaine/internships/](https://umaine.edu/compumaine/internships/)  
Applications are reviewed on an on-going basis.



Sliding-window analysis of two mammograms to identify breast cancer risk.

The CompuMAINE Lab is a computational research lab that explores novel breast cancer early diagnostic methods (which has led to two patents), cell nucleus architecture, regenerative medicine, muscle cell morphogenesis, neuroscience, and astrophysics. Eighty-three percent of the Lab's publications in peer-reviewed journals include undergraduate or graduate student co-authors. These students majored in biochemistry, biomedical engineering, chemical engineering, computer engineering, computer science, electrical engineering, mathematics, and physics. Our students have gone on to work / study at Stanford University, Yale University, Brown University, Washington University St. Louis School of Medicine, UCSF, Rensselaer Polytechnic Institute, University College London, University of Manchester, Université de Grenoble, Ohio State University, University of Hawaii, Utah State University, Lockheed Martin Aeronautics, Texas Instruments, and Unum. For more information, please see <https://umaine.edu/compumaine/>

