

CHANGES IMPACTING MAINE'S FOREST INDUSTRY

Results from Fall 2019 Survey

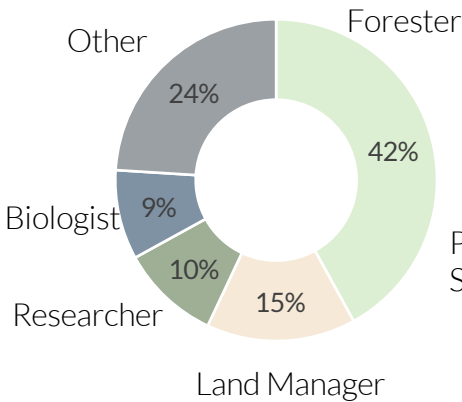
Compiled by: Alyssa Soucy, University of Maine

126 Survey Responses

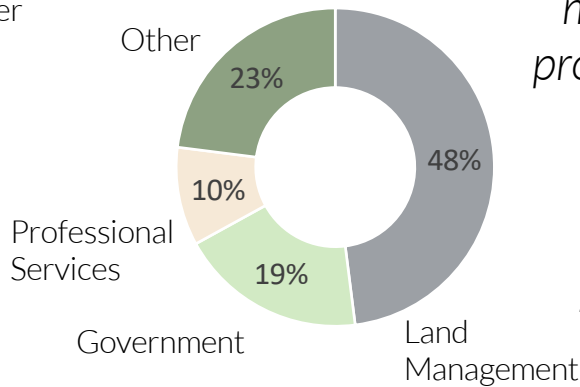
We recently surveyed CFRU members as part of an effort to understand perceptions of weather variability and management strategies that promote healthy forest systems in Maine.

Thank you to those who participated in the survey!

TOP PRIMARY POSITIONS



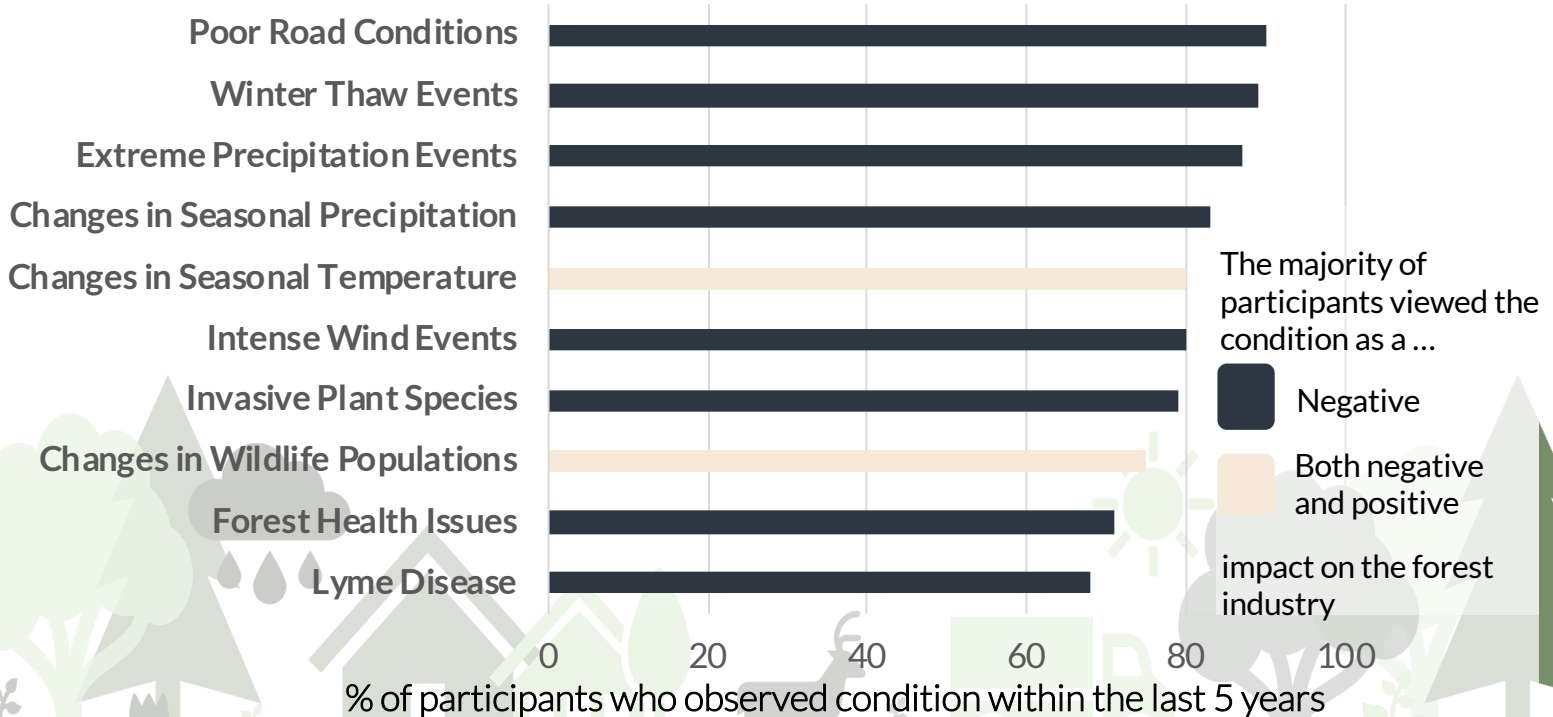
SUBSECTORS REPRESENTED



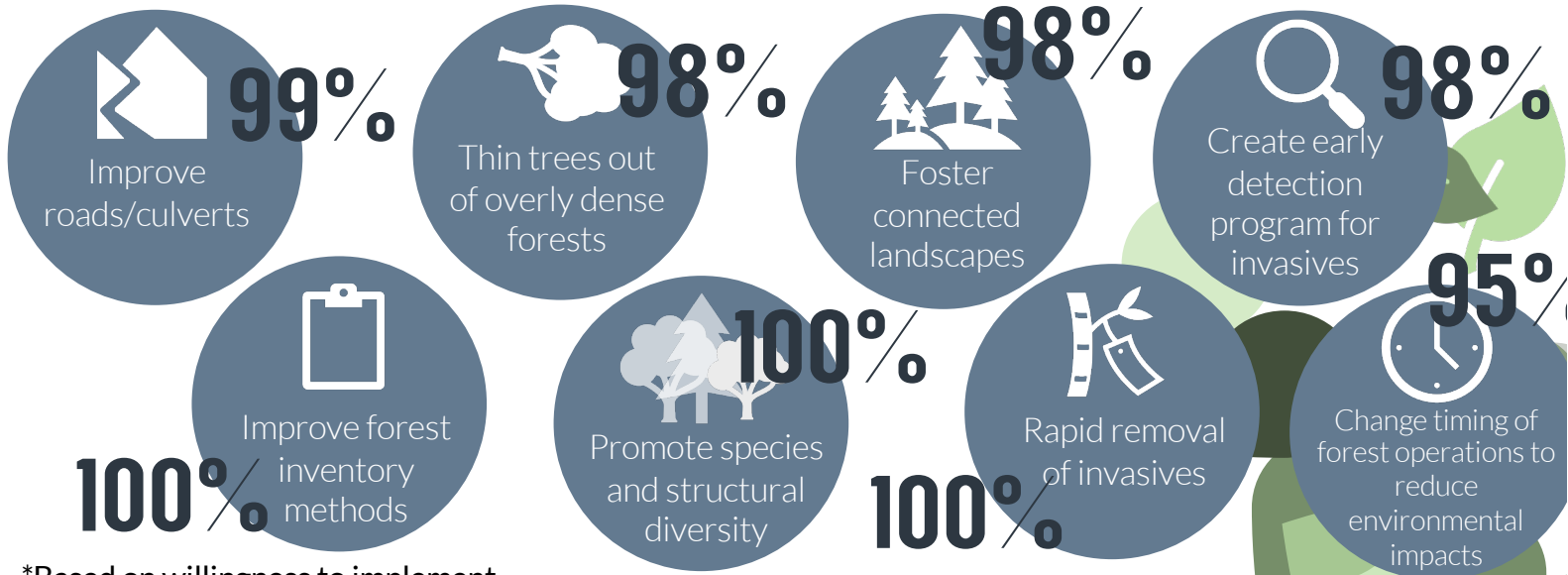
TOP SOURCES OF CLIMATE INFORMATION



TOP 10 MOST FREQUENTLY EXPERIENCED CONDITIONS IN MAINE

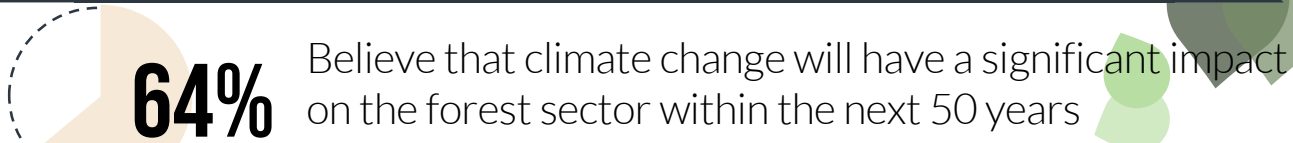


TOP FOREST MANAGEMENT STRATEGIES*



*Based on willingness to implement

ADAPTING TO CLIMATE CHANGE



SUMMARY FINDINGS

An overwhelming majority of participants experienced poor road conditions, winter thaw events, and extreme precipitation events within the last year – these were perceived by most as a negative impact on the forest industry. Both winter thaw events and extreme precipitation events were thought to be at least somewhat due to climate change, while there was less agreement for deteriorating road conditions. In agreement with experiences with climate conditions, the majority of participants were willing to improve road and culvert maintenance. Participants also were highly willing to implement management practices centered around promoting diversity and monitoring and removing undesired invasive species. While many participants (64%) believed that climate change was going to have a significant impact on Maine's forest sector, only 31% agree that there are specific management practices available to adapt to climate change and only 16% agree that current policies consider climate change impacts.

Thank you to all the participants who took part in this survey. If you have any questions about the study, please contact Alyssa Soucy at alyssa.r.soucy@maine.edu or Dr. Sandra De Urioste-Stone at sandra.de@maine.edu.

This project was supported by the USDA National Institute of Food and Agriculture, McIntire Stennis project #ME0-41504 through the Maine Agricultural & Forest Experiment Station, the AVANGRID Foundation, and AFRI Agriculture and Natural Resources Science for Climate Variability and Change Challenge Area Program grant #2018-69002-27933 from the USDA National Institute of Food and Agriculture.

